

ANNUAL REPORT JULY 1, 2023-JUNE 30, 2024

UNIVERSITY CENTER FOR SOCIAL AND URBAN RESEARCH



University of
Pittsburgh®

CONTENTS

- 1 Message from the Interim Director
- 2 Who We Are
- 3 Programs
- 4 What We Do:
Center Resources
 - Survey Research Services
 - Urban and Regional Analysis Services
 - Western Pennsylvania Regional Data Center
 - Gerontology Services
 - Qualitative Data Analysis Services
 - Acquisition and Management of Secondary Data
 - Information Technology Infrastructure
- 17 Steven D. Manners Research Development Awards
- 18 Core Staff
Faculty Associates
- 20 Projects
- 28 Publications 2023-24

MESSAGE FROM THE INTERIM DIRECTOR

I am happy to update the University community on the recent activities and accomplishments of the University Center for Social and Urban Research (UCSUR).



Scott R. Beach, PhD
Interim Director, UCSUR

During the past year, UCSUR produced 18 peer-reviewed publications and participated in more than 60 funded research projects, the majority of which involve multidisciplinary collaborations.

During the past year, UCSUR produced 18 peer-reviewed publications, 3 book chapters, and 5 technical reports; and participated in over 60 funded research projects, the majority of which involve multidisciplinary collaborations. We continued our nationally recognized research in family caregiving, financial exploitation of older adults, and technology and aging. As part of that effort, Dr. Beach is Co-Director (Co-PI) of an Administration for Community Living (ACL) / National Institute on Disability, Independent Living, and Rehabilitation Research (NIDILRR) Rehabilitation Research and Training Center (RRTC) on Family Support. This is a five year, \$4.3M Center grant focused on facilitating the rapid translation and dissemination of state-of-the-art research and training into direct services and support programs designed to improve care, health, and quality of life of persons with disability, their families, and informal caregivers.

UCSUR also released the State of Aging, Disability, and Family Caregiving in Westmoreland County report, a replication of the State of Aging in Allegheny County report released in 2023. Using secondary data and a telephone survey, the project characterizes older adults across a broad range of dimensions including demographics, income and poverty, health, work and retirement, living arrangements, housing and neighborhood conditions, and caregiving, disability and aging service use. The report has been broadly disseminated to Westmoreland County aging service providers and policymakers. We also released the Allegheny County Quality of Life Survey 2023, the third in our series of surveys (2012, 2018) describing county resident perceptions across multiple life domains. The survey was designed collaboratively with several community partners, and the results have been broadly disseminated to community members, service providers, and county officials.

UCSUR also continues to be a key resource for data and analysis to inform regional public policy through the Western Pennsylvania Regional Data Center (WPRDC), which currently provides access to over 300 downloadable data sets (many updated on a frequent basis). The WPRDC also offers several data extraction and visualization tools that enhance user access and support statistical analyses. WPRDC has been extremely successful in obtaining foundation and federal support for multiple projects, which has allowed for the continued expansion of the initiative. Our Urban and Regional Analysis (URA) Program continues to conduct research focused on major economic and demographic trends in the Pittsburgh region and in national / international contexts, regional development, community change, and workforce development. The work of URA is often covered by local and national media outlets.

UCSUR continues to build its permanent research infrastructure. Highlights include our regional research registry with more than 9,000 local residents (including 1,200 family caregivers) willing to participate in research studies; and continued expansion of our Geographic Information System (GIS) capabilities.

Finally, UCSUR celebrated its 50th anniversary in 2022, and in Fall 2023 we organized a symposium to celebrate the milestone - "Housing in the 21st Century," a well-attended event that focused on one of the most important issues facing our society. The event was an excellent showcase for UCSUR's collaborative, multidisciplinary, community-focused agenda. I hope this report will give you a sense of the value that UCSUR provides to the university and broader community.

WHO WE ARE

University Center for Social and Urban Research

The mission of UCSUR is to work collaboratively to conduct interdisciplinary research that improves communities and addresses social, economic, health, and policy issues most relevant to society. UCSUR carries out this mission by: (1) providing research support infrastructure and training; (2) conducting original research in a few focused areas, including urban impact analysis, survey methodology, and psychosocial aspects of aging; and (3) enhancing access to local and national policy-relevant data.



GOALS

The University Center for Social and Urban Research (UCSUR) was established in 1972 to serve as a resource for researchers and educators interested in the basic and applied social and behavioral sciences. UCSUR promotes and coordinates interdisciplinary research focused on the social, economic, and health issues most relevant to our society. Specific goals of UCSUR fall into four broad domains:

1. **Provide** state-of-the-art research support services and infrastructure for investigators interested in interdisciplinary research in public policy and the social, behavioral, and health sciences
2. **Support** the community service mission of the University by providing data and conducting policy analysis for the region
3. **Develop** nationally recognized research programs within the center in a few selected areas (currently family caregiving, elder abuse, and technology and aging)
4. **Support** the teaching mission of the University by offering interdisciplinary training and mentoring diverse graduate students, post-doctoral fellows, and junior faculty members

To achieve the strategic goals of the Center, UCSUR maintains a permanent research infrastructure available to faculty and the community with the capacity to:

1. **conduct** all types of survey research and quantitative data analysis;
2. **acquire, manage, store, and analyze** secondary and administrative data sets including Census data and data of unique local interest;
3. **obtain, format, and analyze** spatial data;
4. **carry out** regional econometric modeling;
5. **design and carry out** descriptive, evaluation, and intervention studies; and
6. **conduct** qualitative data collection and analysis.

Our research infrastructure is organized under three core programs:

1. **Survey Research Program**, which is responsible for all aspects of survey research and quantitative data analysis;
2. **Urban and Regional Analysis Program**, which acquires, manages, and analyzes secondary and administrative data sets; does regional econometric modeling; and obtains, formats, and analyzes spatial data; and
3. **Qualitative Data Analysis Program**, which supports the collection and analysis of open-ended text data using rigorous computer-based methods.

PROGRAMS

In response to faculty interests and current domestic policy issues, UCSUR develops interdisciplinary research programs that address regional and national policy issues. The resources described in the next section are provided by one or more of these programs. As new policy issues emerge, UCSUR is prepared to facilitate and coordinate the development of additional programs identified by interested faculty. Existing research programs include:

Projects conducted in all these areas illustrate the Center's commitment to enhancing scientific understanding of social phenomena while generating information for improved policymaking in both the public and private sectors.

Survey Research

Maintains a highly experienced staff of survey professionals, trained interviewers, and data management specialists. Services are available to faculty, staff, and students throughout the University and to local, state, and federal agencies and others working in the public interest. Offers the capability to execute any or all phases of a survey research project, including sample design, questionnaire construction, data collection, data processing, statistical analysis, and reporting. Features a 25-line telephone bank for Computer-Assisted Telephone Interviewing (CATI).

Urban and Regional Analysis

Promotes scholarly analysis of urban and regional development through multidisciplinary research and technical assistance in local, national and international issues. Furthers our understanding of the causes and consequences of regional economic development and social change, enhances the analytic basis for public policy decisions and civic engagement, aids in the evaluation of policy alternatives, and applies GIS and neighborhood indicators to understand community revitalization.

Qualitative Data Analysis

Offers a rigorous approach to qualitative data collection and analysis, including focus group facilitation; in-depth interviewing; cognitive interviewing; analysis of textual or website information; audio and video transcription and analysis; data preparation, cleaning, and management; codebook development and testing, coding and multi-coder adjudication; reliability and validity reporting; and results analysis and reporting.



WHAT WE DO: CENTER RESOURCES

SURVEY RESEARCH SERVICES

UCSUR provides survey research services through the Survey Research Program (SRP). SRP maintains a highly experienced staff of survey professionals, trained interviewers, and data management specialists. SRP services are available to faculty, staff, and students throughout the University and to local, state, and federal agencies and others working in the public interest.

SRP is able to carry out any or all phases of a survey research project, including sample design, questionnaire design, data collection, data processing, statistical analysis, and reporting. SRP staff have the training and experience to design scientifically valid studies customized to client research needs. SRP can help clarify study objectives and provide advice on how to obtain the highest quality data within available resource constraints. More specifically, SRP provides assistance in the following areas:

Sample Design

SRP staff provide advice on sampling methodology and sample size to meet study objectives and budget. Services include in-house development of specialized sample frames, or consultation with commercial sampling firms to obtain an appropriate sample. Examples of the types of samples provided include:

- **online panel/research registry samples:** Geographically and demographically targeted samples using commercially available web panels or in-house research registries. These are also useful for cost-effective samples of rare populations.



- **random digit dialing (RDD) samples:** Particularly suited for telephone surveys of the general population, computer-generated telephone numbers are used to target specific geographic areas, including both listed and unlisted phone numbers, landline and cellular. RDD sampling for any region of the United States is available.
- **targeted/listed samples:** Samples to reach specific subgroups or rare populations. These are useful for telephone recruitment of participants for larger studies. They are also used for supplementing RDD or online / research registry samples with oversamples of rare populations.

Data Collection Methodology

SRP staff can provide:

- **advice** on the most productive and cost-effective method of data collection (mail, telephone, in-person, or internet/web-based), and the effective use of technology for surveys.
- **specification of procedures** for maximizing response rates within the framework of available resources. For example, recommended number of attempts to contact respondents, securing initial cooperation, following-up incomplete interviews, converting refusals into acceptances, and use of mixed-mode designs and incentives.

Questionnaire Development

SRP staff can provide assistance with all aspects of the development of a reliable and valid instrument, including:

- **writing**, formatting, and ordering questions;
- **asking** sensitive questions; and
- **pretesting** the instrument.

Participant Recruitment and Screening

In addition to assisting with primary survey data collection, SRP can assist researchers with locating, contacting, screening, consenting, and scheduling research participants. We use a variety of sample sources (e.g., telephone samples, research registries) and methods (telephone, web, social media) to cost-effectively recruit and enroll research participants for observational, clinical, and intervention studies.

Research Registry

UCSUR has developed and maintains an IRB-approved research registry currently containing more than 9,000 local residents who have agreed to be contacted for surveys and other research studies. The participants are recruited to the registry on an ongoing basis from the pool of respondents to UCSUR-conducted population-based telephone surveys. The registry includes detailed contact information and demographic information including age, gender, race, education level, marital status, household composition, employment status, and income. This allows for targeting of participants for studies with specific eligibility requirements. External investigators can contract with SRP to access the registry for study recruitment. SRP has added an indicator for participants who are providing unpaid care to an ill or disabled family member or friend (i.e., family caregivers). To date, more than 1,200 family caregivers have been identified who are willing to participate in research studies.

Patient-Reported Outcomes Data Collection for Clinical Research

SRP conducts patient-reported outcomes (PRO) studies using telephone, web, in-person, and other technologies, including mixed-mode designs. These are typically part of clinical trials or intervention studies that follow patients over time. The SRP call center is staffed seven days per week by trained supervisory and interviewer staff members. SRP maintains a secure project dashboard that allows transfer of research participant data and contact information to initiate data collection protocols, schedule assessments, and enable two-way data dialog between the principal investigator's team and SRP staff members. SRP has conducted dozens of complex longitudinal PRO assessment studies with varying clinical populations and has consistently attained response/retention rates above 80 percent.

WHAT WE DO: CENTER RESOURCES

Interviewing and Data Collection

SRP conducts local, regional, and national telephone, and mail surveys with both general and special populations, as well as in-person surveys in the Southwestern Pennsylvania region. SRP also conducts internet/web-based surveys.

SRP relies on a pool of experienced interviewers for telephone and in-person surveys. These include both undergraduate and graduate students, as well as non-students under the management of senior fieldwork supervisors.

Interviewer training and quality control:

Interviewers are trained in general and project-specific interviewing techniques, such as maintaining objectivity, reading questions as written, and securing respondent cooperation. Training involves a combination of lecture, written hand-outs, video instruction, and role-playing. Interviewers are continuously monitored during data collection for quality assurance, and periodic re-training sessions occur as necessary.

Computer-assisted telephone interviewing (CATI): A 25-line telephone bank at UCSUR is dedicated to a computer-assisted telephone interviewing system. Interviewers read questions as they appear on the screen and enter the respondents' answers directly into the computer. CATI allows complex question contingencies, sample management, and call scheduling to be handled automatically.

(RDD) cell phone surveys: UCSUR has experience conducting random digit dialing (RDD) cell phone surveys in order to supplement traditional landline RDD telephone surveys. This methodology ensures inclusion of cell phone-only households, estimated at 70 percent of the U.S. population (and growing). Cell phone-only households are typically younger, more likely to be employed, and more ethnically diverse, and their exclusion can result in significant biases in landline-only surveys.

Computer-assisted personal interviewing (CAPI): With this type of interview an interviewer, using a laptop computer, reads questions to the respondent and then enters the answers directly into a database on the laptop computer. CAPI is programmed similar to computer-assisted telephone interviewing, and provides the same advantages (automated skips, randomized experiments, etc.).

Audio computer-assisted self-interviewing (ACASI): With this application a respondent operates a computer, the computer displays the questions on screen and plays recordings of the questions to the respondent who enters answers directly into a database on the computer. A respondent typically uses headphones with our ACASI solutions in order to maintain response privacy. ACASI enhances perceived privacy for sensitive questions and is ideal for less literate populations. ACASI is similar to CATI, CAPI, and CASI in programming requirements and function.





Interactive voice response (IVR):

IVR is an automated system where a recorded voice administers survey questions/scripts and detects voice and keypad inputs from a home phone or cell phone. Privacy is enhanced by switching to IVR from a live interviewer for the administration of sensitive questions. IVR is also ideal for ecological momentary assessment (EMA).

Web-based data collection: SRP has the capability to conduct web-based surveys and other online data collection and management. UCSUR operates secure servers that host such activities and uses the University-approved Qualtrics software platform. This also includes the use of text-based surveys with links to Qualtrics.

Mobile device data collection: SRP has capabilities to design applications for the collection of data on smartphones and other mobile devices. These include tools for the collection and integration of self-reported survey, location tracking, and physiological monitoring data for real-time ecological momentary assessment studies.

Additional data collection services:

Mail surveys, and in-person surveys in the Southwestern Pennsylvania region, are also available.

Surveys of special and hard-to-reach populations: UCSUR has conducted numerous surveys of special, hard-to-reach populations, including numerous clinical populations, children, and ethnically and linguistically diverse samples. UCSUR has conducted interviews in Spanish, Chinese, and Korean and has the capability to conduct international surveys.

WHAT WE DO: CENTER RESOURCES

Data Management

Using a variety of computer programs, languages, database management software, and operating systems, SRP staff are available to perform a number of data management functions, including database development, editing, coding, and survey data processing. SRP staff also have the capability to integrate survey respondent data with GIS-based spatial data, and with other secondary data sources.

Statistical Analysis of Survey Data

SRP staff can perform statistical analyses of survey data, ranging from simple tabulations to relatively complex statistical modeling using a variety of statistical packages. Analytic capabilities include:

- descriptive statistical analyses of survey responses, including calculations of sampling error, and statistical weighting adjustments for unequal selection probabilities and non-response
- cross-classification analyses with demographic or other predictive factors
- multivariate analyses, including ANOVA, factor analysis, linear and non-linear regression, logistic regression, categorical methods, and structural equation modeling longitudinal analyses

Report Preparation and Presentation

SRP staff members have experience in the production of a variety of reports, including:

- simple tabulations
- executive summaries
- in-depth narrative reports
- oral presentations of results to interested parties



Through URA's work, UCSUR is one of two research affiliates of the Pennsylvania State Data Center, the official source of demographic and economic data for the state.

URBAN AND REGIONAL ANALYSIS SERVICES

UCSUR's Urban and Regional Analysis Program (URA) analyzes major economic and demographic trends in the Pittsburgh region in national and international contexts. URA brings together faculty, research staff, and graduate students to examine important urban and regional issues, with the results disseminated widely to state and regional policymakers, local officials, and community and economic development organizations. URA also partners with other researchers and organizations across the globe to advance urban and regional knowledge. URA's research extends from regional development to community change and examines their consequences for regional restructuring, equity implications, and policy analysis. In addition to the performance of the regional economy, specific strategic economic sectors are examined through in-depth studies and their implications for workforce development and job creation. The program also fosters the development of new methods of data collection and analysis. URA research is published in scholarly journals and technical reports and has been an important element of UCSUR's commitment to providing regional economic development analysis to both the academic community and the Pittsburgh region. Through URA's work, UCSUR is one of two research affiliates of the Pennsylvania State Data Center, the official source of demographic and economic data for the state.

Pittsburgh Regional Economic Model

Regional economic models describe the flow of monetary and labor resources within and across both regions and economic sectors. They are often used to assess the economic and labor impacts of policy alternatives, such as tax revisions, economic development, large-scale infrastructure investment, and many other similar scenarios.

UCSUR uses software developed by Regional Economic Models Inc. (REMI), of Amherst, MA for economic impact analysis and economic and demographic forecasting for an 11-county region of southwestern Pennsylvania. The Pittsburgh REMI model is supported by UCSUR in partnership with the Southwestern Pennsylvania Commission (SPC), which uses REMI for planning transportation infrastructure and long-range forecasting. UCSUR has over 25 years of experience applying the REMI model to the Pittsburgh region. Previous applications of Pittsburgh's REMI model include economic, population, and labor market forecasting and regional economic impact analysis.

Geographic Information System

Geographic Information System (GIS) and spatial analysis expertise (Ellen Kinnee) continues to attract a wide variety of research to UCSUR. In addition to ongoing work supporting a

five-year NIH grant with researchers at Drexel University and the Icahn School of Medicine at Mount Sinai, UCSUR is supporting this group on a three-year US EPA STAR grant to study resilience enhancing assets among children in the state of New York. A joint project with the School of Public Health has yielded a comprehensive spatial database of structural racism measures for use in maternal health and other epidemiological studies. Several collaborations have helped investigators to integrate GIS into medical research and have strengthened UCSUR ties with UPMC. These include two studies looking at utilization and barriers to telehealth services and the effect on cardiovascular and metabolic disease outcomes as well as an examination of artificial light at night exposure and circadian activity rhythm disruption in adolescents and young adults.

A spatial Age-Friendly Community Index (AFCI) was developed as part of the State of Aging survey conducted by UCSUR in Allegheny County. The AFCI is comprised of a database of age-friendly domains and spatial indicator variables at the Census tract level. Percentile rankings of values allow for comparison of tracts within the county using an interactive web map and a companion online report, both publicly available at <https://afci.ucsur.pitt.edu/>. A similar index has been developed for Westmoreland County

where the domains are characterized using age-friendly spatial indicators established by affected stakeholders. Ongoing analyses are comparing survey participant perceptions of neighborhood environment with the AFCI spatial indicators with results presented at the UCSUR 50th anniversary seminar and the National RRTC on Family Support conference.

The Monongahela-Youghiogheny Healthy Aging Team (MYHAT) study, funded in part by a research grant from the National Institute on Aging, seeks to describe the distribution of mild cognitive impairment (MCI) and related entities in a diverse community centered in the Mon Valley. GIS support includes geocoding and development of spatial neighborhood indicators associated with MCI measures and outcomes over time. A map of homicide rates and cohort locations is included in a manuscript accepted at the Journal of the American Geriatrics Association, and a grant renewal is in process to expand development of a social vulnerability metric tailored to populations with cognitive impairment.

Pittsburgh Perspectives

The URA Program has expanded public outreach with an online section of the UCSUR web page, which publishes short analyses of topics related to economic and demographic change in the Pittsburgh region.



WHAT WE DO: CENTER RESOURCES



WESTERN PENNSYLVANIA REGIONAL DATA CENTER

The Western Pennsylvania Regional Data Center (WPRDC) launched in 2015 as a partnership between the University of Pittsburgh, Allegheny County, and the City of Pittsburgh. It provides an inclusive infrastructure for openly sharing civic information, and project staff provide a range of services as a civic data intermediary. Funding for the project is provided through the County and City, local and national philanthropic organizations, federal grants, fee for service projects, and University support provided through UCSUR.

Over the past year, the WPRDC provided the following services and infrastructure to the University and the broader community.

Support for Strategic University Community Initiatives

The WPRDC provides infrastructure for strategic initiatives of the University and community. It works to support many projects and initiatives by providing data, expertise, and tools. The project team enhances the University's mission by supporting community engagement, research, and education efforts. At a community level, the WPRDC supports a range of initiatives, including health equity, environmental sustainability, affordable housing, data justice, and digital equity.

Provide Access to Open Data

The WPRDC hosts open data on a variety of topics, and, in 2023 made major upgrades to the initiative's open data portal and website. Some of the most-used data includes County property sales and assessments, City crimes, County blood lead tests, COVID-19 vaccinations, Pittsburgh Regional Transit ridership, and 211, 311, and 911 requests for service. This data can be downloaded or accessed through an API and is used by students in many classes at the University, high school students from the Pittsburgh Dataworks Data Jam, and other members of our community.

Data Acquisition and Transformation Services

The WPRDC staff often collaborate on research and community projects to acquire data and make it available. We are partnering with NASA to provide several data feeds collected by climate satellites that can be used to inform responses to air quality issues and climate change. We also continue to partner with the County and City to publish data and maintain data feeds from their internal systems, and we continue to sustain a regularly updated collection of data to inform affordable housing preservation, community health, and environmental initiatives in Allegheny County in partnership with local partners.

Data Visualization Tools and Dashboards

To help make data more relevant and useful to different people, the WPRDC has built exploration tools and dashboards using open data, including the University's Community Engagement and Outreach Map; the interactive Greenprint map supporting land conservation efforts with the Allegheny Land Trust; HouseCat, a tool to display data about subsidized residential properties; and a variety of tools that provide community statistics on health and housing.

Support to University Research, Analysis, and Special Projects

The WPRDC staff supports our colleagues at the University of Pittsburgh. Staff continue to maintain and improve the Community Engagement and Outreach Map, which highlights community partnerships involving the University. For the past several years, the WPRDC team has been collaborating with The Pittsburgh Study (TPS), a partnership of the Children's Hospital of Pittsburgh and the University of Pittsburgh. Staff also support a range of research efforts related to maternal and child health with colleagues in the School of Public Health. We continue to partner with colleagues at the University Library System and School of Computing and Information through the Civic Switchboard project, support research efforts at Pitt Cyber, and contribute to Pitt's Responsible Data Science initiative.



WHAT WE DO: CENTER RESOURCES

Course Design and Personalized Learning

The WPRDC has been actively involved in providing learning opportunities for students. The Regional Data Center has also supported independent student public interest technology projects, and has supported students working through the Center for Analytical Approaches to Social Innovation Grief to Action initiative.

Training

Building on earlier work with libraries, the WPRDC staff have continued to strengthen its data literacy programs. New initiatives focused on using art as a vehicle for self-expression, and working to build skills and confidence of young people in data.

Technical Assistance

The WPRDC often consults with faculty, staff, and community partners that are looking to use data in their work. We primarily do this through consultations and ad-hoc requests.

Provide Publishing Platforms

Over 20 organizations publish data through the WPRDC's open data portal. The WPRDC helps partners big and small by providing a shared infrastructure for publishing open data. The open data portal provides the ability to download complete data sets or access data through an API, all with complete metadata and a license enabling re-use.

Representing the University of Pittsburgh in External Networks

The WPRDC represents the University in several different national networks focused on civic data, open data, and technology. Participation in these networks helps us to connect our work to other practitioners.

GERONTOLOGY SERVICES

Graduate Certificate in Gerontology

This educational program is designed to serve individuals from diverse educational, employment, and professional backgrounds who are interested in acquiring basic knowledge about gerontology and geriatrics and specialized knowledge of aging and aging processes. Students may focus broadly on a course of study in a general multidisciplinary track offered both on-campus as well as through Pitt Online. They may also select specialty tracks focused on prevention and healthy aging, family support, gerontechnology, law, mental health, nursing, occupational therapy/rehabilitation, public health, and social work.

Whether to gain credentials and skills for a competitive advantage in the marketplace or to enhance understanding of aging to inform the delivery of services, programs, or products, students may solely enroll in this certificate program, or they may pursue the certificate in conjunction with a degree program. Credits earned for the certificate may often be applied toward a degree program. Information about this Graduate Certificate in Gerontology Program can be found at: agingcertificate.pitt.edu.





In collaboration with the Health Policy Institute, the Gerontology Program launched the Center for Caregiving Research, Education and Policy.

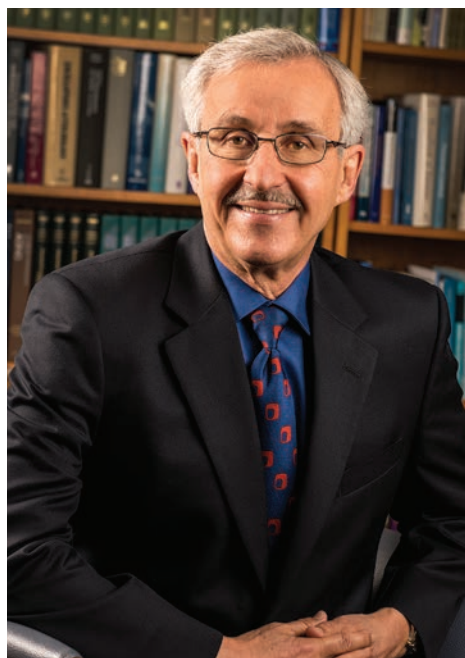
Center for Caregiving Research, Education and Policy

In collaboration with the Health Policy Institute, the Gerontology Program of UCSUR launched the Center for Caregiving Research, Education, and Policy. The mission of the Center is to enhance research on caregiving; train professionals and family caregivers to be as effective as possible; institute support programs integrating caregivers into existing health care services, long-term services and support systems; and inform public policy on the role of caregivers in state and national health care regulations. Drs. Schulz and Beach are on the Center's Executive Committee.

For more than three decades our multidisciplinary faculty and clinicians at the University of Pittsburgh and UPMC have been at the forefront of research documenting the impact of caregiving on family caregivers and the persons they care for, developing intervention strategies to mitigate the negative effects and enhance the positive effects of caregiving, and formulating policy to support caregivers. The Center consolidates and synergizes this expertise to accelerate the impact of our research on policy, health care systems, and the health of family members who are providing and receiving care.

Milestone - Establishment of the Schulz Aging Graduate Student Resource Fund

On October 17, 2024, Richard Schulz (Director Emeritus, UCSUR; and Distinguished Service Professor of Psychiatry, Emeritus, School of Medicine) made an irrevocable gift of \$100,000 to the University of Pittsburgh. This fund shall be used to provide support for graduate student(s) in the Department of Epidemiology in the School of Public Health for education-related expenses, with preference given to student(s) whose research focuses on aging.



Richard Schulz, PhD

Highlights of Richard Schulz's Career at Pitt:

1984: Recruited by the Department of Psychiatry and UCSUR to serve as director of the Gerontology Program, a University-wide position charged with building the research capacity on aging throughout the University. He played a pivotal role in developing the expertise and infrastructure to support research on aging through recruitment, mentoring junior faculty, providing pilot grant support, and raising the profile of research on aging both locally and nationally. By the end of the 20th century, the research portfolio on aging at Pitt was second to none among U.S. universities.

1995: Appointed interim director of USCUR and appointed director in 1999. During his tenure as director (1995-2016), he continued to serve as director of the Gerontology Program. He also served as director of the Geriatric Education Center of Pennsylvania (1985-2020), cofounded the Institute on Aging of UPMC and the University of Pittsburgh (2003), and established the Gerontology Graduate Certificate Program (2004).

2014: Appointed chair of the National Academies of Sciences, Engineering, and Medicine's landmark study, Families Caring for an Aging America.

WHAT WE DO: CENTER RESOURCES

QUALITATIVE DATA ANALYSIS SERVICES

The Qualitative Data Analysis Program (QDAP) at UCSUR provides a resource to the University community in all aspects of qualitative data collection and analysis. Experienced QDAP staff can carry out or assist with all phases of a qualitative research project including study design, project management and coordination, data collection utilizing interviews, focus groups, and document or website analysis, audio and video transcription, data coding and analysis, and results reporting.

Data Collection and Management

QDAP staff have the expertise to collect and manage a range of qualitative data utilizing a variety of methods and sources. This includes conducting in-depth interviews, facilitating focus groups, and collecting qualitative data from both traditional and innovative sources such as document and textual material, videos, images and other visual material, and web sources such as websites, blogs and emails. QDAP provides high quality transcription of audio and video recordings for further analysis. QDAP staff can provide management services ranging from full project management to assistance in the management of data collection including recruitment, screening and scheduling of participants, depending on project needs. Using qualitative data analysis and management software, QDAP staff can also organize and manage qualitative data in preparation for analysis.

Value-Added Coding

Accurate and reliable coding is central to qualitative and mixed methods analysis. QDAP offers a rigorous approach to analyzing a variety of qualitative materials. Experienced coders deliver the data you need in a timely and expert manner from a wide variety of sources. Original material for analysis might include in-depth interviews, open-ended survey answers, field notes, transcripts from focus groups, web blogs, e-mails, website content, videos and images, results from database searches (such as LexisNexis™), congressional testimony, historical texts, and a host of other unstructured but digitized data sets. QDAP staff work with your research team to craft an analysis plan and codebook with a tailored methodology designed to code the material for key concepts and relationships. Multiple coders can quickly and reliably extract the data you need to reach valid inferences.

QDAP employs University of Pittsburgh students and UCSUR professional staff trained in data collection and in using qualitative analysis software. We maintain a 15-station transcription and qualitative data coding lab which utilizes Olympus transcription software; ATLAS.ti, a widely used qualitative data analysis software package that supports project management, enables multiple coders to collaborate on a single project, and generates output that facilitates the analysis process; NVivo, another widely used qualitative data analysis software package; Transana, a video coding software package; and a specialized, in-house program for quality control which calculates inter-coder reliability statistics and simplifies adjudication of coder disagreement. In addition, we offer training seminars and one-on-one training sessions for faculty, staff and students in using ATLAS.ti, NVivo and Transana.





Services Provided

- Study design, management and coordination
- Interviewer training and management
- Participant recruitment
- Data collection including focus group facilitation, in-depth interviewing, cognitive interviewing and document analysis
- Transcription of audio and video recordings
- Data preparation, cleaning, and management
- Codebook development and testing
- Coding and coding adjudication
- Coder reliability and validity reporting
- Results analysis and expression
- Software training for qualitative data analysis software (ATLAS.ti, NVivo, Transana)

ACQUISITION AND MANAGEMENT OF SECONDARY DATA

UCSUR provides assistance for secondary data acquisition and management to the academic community and to the Pittsburgh region as a whole. As an affiliate of the Pennsylvania State Data Center, the official source of demographic and economic data for the state, UCSUR is a repository for electronic and printed Census information, including Census 2020 data. UCSUR also acquires and maintains a variety of government statistics, economic and labor market data, and other types of secondary information on a regular basis. This information is available to the academic community and to the general public.

The data acquisition and management services UCSUR provides include:

- assistance in acquiring secondary data stored at UCSUR to interested individuals and organizations;
- assistance in locating and acquiring a variety of other types of secondary information;
- expertise and consultation in the appropriate use and understanding of various secondary data sources; and
- evaluation and interpretation of policy relevant secondary information data for government, business, labor, media and other organizations.

UCSUR also conducts demographic, economic and policy research and analysis and reports on secondary data and data trends relevant to the Pittsburgh region, both alone and in combination with various primary data sources. This research is reported through a number of venues, including research reports and up-to-date neighborhood information on the UCSUR website (www.ucsur.pitt.edu).

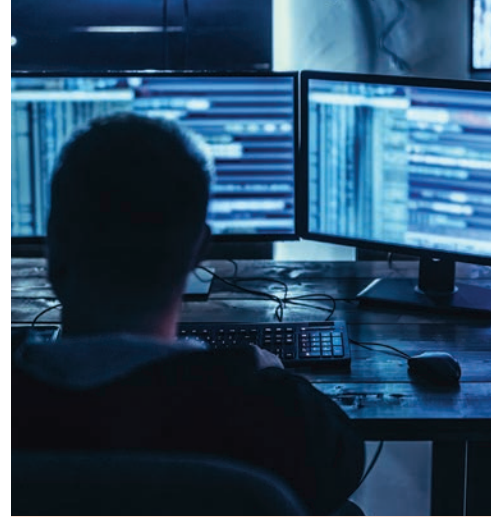
WHAT WE DO: CENTER RESOURCES

INFORMATION TECHNOLOGY INFRASTRUCTURE

UCSUR's IT Department continues to partner closely with Pitt-IT, the Network Operations Center (NOC), and the NOC's efforts within Microsoft's Azure Cloud Services. This allows UCSUR IT to offer traditional infrastructure solutions comprised of on-premises data centers, servers, networking hardware, desktop computers, and enterprise application software. In addition, UCSUR IT can also offer cloud infrastructure solutions which support dynamic, multilayered systems that would be too costly and complex to operate locally. This approach allows UCSUR IT to achieve an optimal IT infrastructure that provides business grade high-performance storage, a low-latency network, security, an optimized wide area network (WAN), virtualization and zero downtime.

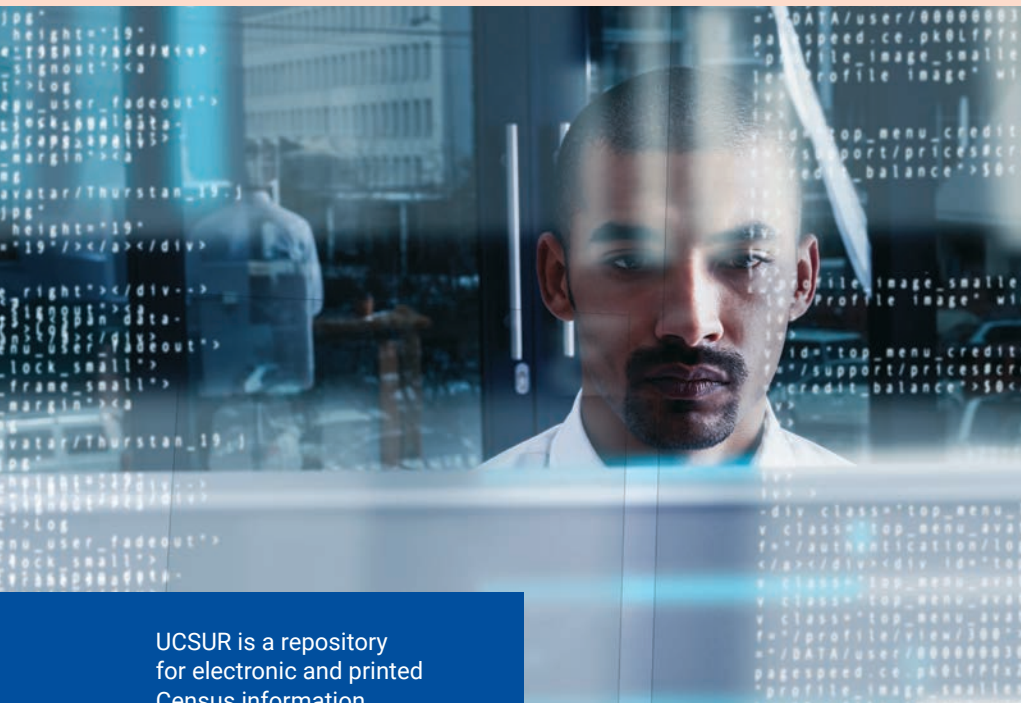
The UCSUR IT Department goals are to

- provide a positive customer experience by providing secure and uninterrupted access to IT services
- develop and launch solutions efficiently and effectively
- enable real-time data collection and dissemination
- improve employee and client productivity



UCSUR IT Department Services:

- Custom database dashboards in support of various types of data collection protocols, including Ecological Momentary Assessments (EMA), telephone outreach, in-person/field interviewing, and various types of web-based interviewing.
- Innovative database programming techniques supporting advanced Qualtrics Survey System interactions, email & SMS/MMS communications, and unique study requirements.
- Server administration, website development, and comprehensive PC Support services.
- PC, laptop, and tablet leasing services for individual or multi-user data collection use.
- Data analytics supporting descriptive & diagnostic analysis.



UCSUR is a repository for electronic and printed Census information, including Census 2020 data.

STEVEN D. MANNERS RESEARCH DEVELOPMENT AWARDS

2024

Kyaien Conner, School of Social Work
Melissa M. Bilec and Amy L. Brooks,
Department of Civil and
Environmental Engineering

2023

Daniel J. Bain, Geology and
Environmental Science
Rebecca G. Reed, Psychology

2022

Sara Goodkind and Jeffrey Shook,
School of Social Work
Karen Jakubowski, Psychiatry
Andrea Rosso, Epidemiology
Andrea Weinstein, Psychiatry

2021

Michael R. Glass, Urban Studies
Program

2020

Jessica Levenson, Psychiatry and
Pediatrics
Randall Walsh, Economics

2019

Jessica Hamilton, UPMC Western
Psychiatric Hospital
Marlo Perry, School of Social Work

2018

Jamie Hanson, Psychology
Junia Howell, Sociology
Chelsea Pallatino, Obstetrics,
Gynecology, & Reproductive Sciences

2017

Courtenay Dunn-Lewis, Health and
Physical Activity
Aidan Wright, Psychology

2016

Victoria Shineman, Political Science
Alicia Sufrinko and Anthony Kontos,
Orthopaedic Surgery

2015

Carissa Low, University of Pittsburgh
Cancer Institute
Elizabeth Votruba-Drzal, Psychology

2014

Anthony Fabio and Dara Mendez,
Epidemiology
Lyn Robertson, Medicine

2013

Brian Beaton and Rosta Farzan, School
of Information Sciences
Kathryn Monahan, Psychiatry
Ming-Te Wang, School of Education

2012

Nicholas Castle, Graduate School of
Public Health

2011

Jane Clougherty, Graduate School
of Public Health
Fengyan Tang, School of Social Work

2010

Shanti Gamper-Rabindran, Graduate
School of Public and International
Affairs
Jennifer H. Lingler, School of Nursing
Werner Troesken and Randall Walsh,
Economics
Jennifer Nicoll Victor, Political Science

2009

Irina Murtazashvili, Economics
Brian A. Primack, Medicine
and Pediatrics

2008

Peter J. Gianaros and J. Richard
Jennings, Psychiatry
Elizabeth LaRue, School of Nursing
Keith Morgenlander, Medicine

2007

Patricia Isabel Documet, Behavioral and
Community Health Sciences
Jeffrey Shook and Michael Vaughn,
School of Social Work

2006

Shanti Gamper-Rabindran and Aaron
Swoboda, Graduate School
of Public and International Affairs
Larissa Myaskovsky, VA Pittsburgh
Healthcare System

2005

Charlotte Brown, Center on Race and
Social Problems
Bruce S. Ling, Institute for
Doctor-Patient Communication
Eva Marie Shivers, School of Education

2004

Ellen Olshansky, School of Nursing
Seung-Hyun Yoo, Graduate School of
Public Health
Susan Zickmund, Medicine

2003

Lisa Brush, Sociology
William Klein, Psychology
Audrey Murrell, Joseph M. Katz
Graduate School of Business
Pamela Peele, Health Economics
Daniel Rosen, School of Social Work
Jeannette Trauth, Graduate School of
Public Health

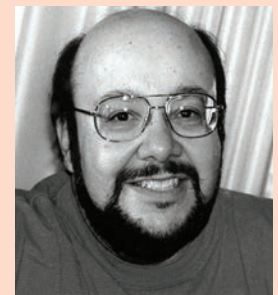
2002

Scott F. Kiesling, Linguistics
Maureen Porter, Administrative and
Policy Studies

2001

Paul E. Griffiths, History and Philosophy
Miriam Hertz, Health Information
Management

In memory of Steven D. Manners, who began working at the Center in 1974 and served as its Assistant Director from 1989 until his death in September 2000, UCSUR initiated a Research Development Awards program in recognition of Mr. Manners' contributions to the Center and the University community. These awards support pilot research in the social, behavioral, and policy sciences that has the potential of leading to larger, externally funded projects of interest to local/national foundations or state/federal agencies. The proposed research must align with UCSUR's mission of working collaboratively to conduct interdisciplinary research that improves communities and addresses social, economic, health, and policy issues most relevant to society.



Steven D. Manners

CORE STAFF

Administration

Interim Director:
Scott Beach

Interim Director of Finance:
Carrie Rodzicz

Administrator:
Anna Aivaliotis

Financial Administrator:
Abena Boadi-Agyemang

Pre-Award Administrator:
Ellie Schneider

Human Resources
Administrator:
Jennifer Bissell

Administration - Technology Services

IT Director/Database
Administrator:
Robert Keene

Systems Administrator:
Eric Wolfe

Senior Research Programmer:
David Walker

Research Programmers:
Rhaven Nelson, Ross Reilly,
Steven Saylor

Survey Research

Program Director:
Scott Beach

Senior Research Specialist:
Janet Schlarb

Senior Fieldwork Supervisor:
Lynda Connelly

Fieldwork Supervisors:
Patricia Lietz, Olivia Wilson

Fieldwork Supervisor/
Research Specialist:
Amber Barton

Research Specialist:
Christine Byerly

Research Specialists/
Interviewers:
Victoria Casilli, Skylar Dale, Luke
Farkas, Ana Geibel, Brandon
Self, Susan Stringfellow

Center Manager, National
Research and Training Center
on Family Support:
Julie Klinger

Outreach Coordinator,
National Research and Training
Center on Family Support:
Heather Tomko

Urban and Regional Analysis

Program Director:
Sabina Deitrick**

Western Pennsylvania
Regional Data Center
Director:
Robert Gradeck

Regional Economist:
Christopher Briem

GIS Database Analyst:
Ellen Kinnee

Project Manager:
Elizabeth Monk

Gerontology Services

Gerontology Certificate
Program Manager:
Jennifer Bissell

Qualitative Data Analysis

Research Specialists:
David Halpern,
Kevan Schultz

** Indicates participating faculty,
not UCSUR staff

FACULTY ASSOCIATES

Charles David Boucek
Anesthesiology

Steven Albert
Behavioral and Community
Health Sciences

Jessica Griffin Burke
Behavioral and Community
Health Sciences

Patricia Documét
Behavioral and Community
Health Sciences

Mary Hawk
Behavioral and Community
Health Sciences

Richard Boyce
Biomedical Informatics

Amber E. Johnson
Cardiology

Melissa Bilec
Civil and Environmental
Engineering

David Sanchez
Civil and Environmental
Engineering

Kenneth Sochats
College of General Studies

Caitlin Bruce
Communication

Catherine V. Palmer
Communication Science and
Disorders

Jacob Biehl
Computing and Information

Rosta Farzan
Computing and Information

Alexandros Labrinidis
Computing and Information

Eleanor Mattern
Computing and Information

Daniel Mosse
Computing and Information

Jeremy Kahn
Critical Care Medicine

Douglas White
Critical Care Medicine

Catherine Cordova
David C. Frederick
Honors College

Mary Marazita
Dental Medicine

Robert Weyant
Dental Medicine

Randall Walsh
Economics

Linda DeAngelo
Education

Michael Gunzenhauser
Education

Maureen Porter
Education

Vince N. Mosesso Jr.
Emergency Medicine

Tina Ndoh
Environmental and
Occupational Health

Steven H. Belle
Epidemiology

Jane A. Cauley
Epidemiology

Anthony Fabio
Epidemiology

Tiffany Gary-Webb
Epidemiology

Andrea Kriska
Epidemiology

Dara Mendez
Epidemiology

Andrea Rosso
Epidemiology

Lindsay Nakaishi
Family Medicine

Daniel Bain
Geology and
Environmental Science

Sabina Deitrick
Graduate School of Public and
International Affairs

Shanti Gamper-Rabindran
Graduate School of Public and
International Affairs

Marcela Gonzalez Rivas
Graduate School of Public and
International Affairs

Jennifer Brick Murtazashvili
Graduate School of Public and
International Affairs

Jennifer Brach
Health and Rehabilitation
Sciences

Anthony Delitto
Health and Rehabilitation
Sciences

Natalie Leland
Health and Rehabilitation
Sciences

Christine McDonough
Health and Rehabilitation
Sciences

Bambang Parmanto
Health and Rehabilitation
Sciences

Howard B. Degenholtz
Health Policy and Management

Meredith Hughes
Health Policy and Management

Everette James III
Health Policy and Management

Laurence A. Glasco
History

Lisa S. Parker
Human Genetics

Mary Besterfield-Sacre
Industrial Engineering

Kathleen McTigue
Internal Medicine

Lawrence Feick
Joseph M. Katz Graduate
School of Business

Carrie R. Leana
Joseph M. Katz Graduate
School of Business

Audrey Murrell
Joseph M. Katz Graduate
School of Business

Ronald A. Brand
Law

Mary Crossley
Law

Vivian Curran
Law

Richard Correnti
Learning Research and
Development Center

Kevin Crowley
Learning Research and
Development Center

Mary Ann Steiner
Learning Research and
Development Center

James M. Roberts
Magee-Women's
Research Institute

Kaleab Z. Abebe
Medicine

Derek C. Angus
Medicine

Sonya Borrero
Medicine

Michael Fine
Medicine

Raagini Jawa
Medicine

Manisha Jhamb
Medicine

Amber Johnson
Medicine

John Kellum
Medicine

Carissa Low
Medicine

Jared Magnani
Medicine

Anne B. Newman
Medicine

Marci Nilsen
Medicine

P. Sudhakar Reddy
Medicine

Eric Rodriguez
Medicine

Leslie P. Scheunemann
Medicine

Robert E. Schoen
Medicine

Galen Switzer
Medicine

Debra K. Weiner
Medicine

Margaret Zupa
Medicine

Denise Charron-Prochownik
Nursing

Rose E. Constantino
Nursing

Jill Demirci
Nursing

Annette DeVito Dabbs
Nursing

Heidi Donovan
Nursing

Willa M. Doswell
Nursing

Jennifer Hagerty Lingler
Nursing

Faith Luyster
Nursing

Ann M. Mitchell
Nursing

Jonna Morris
Nursing

Josh Porat-Dahlerbruch
Nursing

Margaret Rosenzweig
Nursing

Elizabeth A. Schlenk
Nursing

Jennifer Seaman
Nursing

Susan Sereika
Nursing

Angela Caldwell
Occupational Therapy

Pamela Toto
Occupational Therapy

Joseph McCarthy
Office of the Provost

Anthony Kontos
Orthopaedic Surgery

Alicia M. (Sufrinko) Trbovich
Orthopaedic Surgery

Parmjeet Randhawa
Pathology

Elizabeth Miller
Pediatrics

Raymond Pitetti
Pediatrics

Kristin Ray
Pediatrics

Kelsey Schweiberger
Pediatrics

Pouran Famili
Periodontics

Terri Newman
Pharmacy

Pam Smithburger
Pharmacy

Victoria Hornyak
Physical Therapy

James J. Irrgang
Physical Therapy

Jessie VanSwearingen
Physical Therapy

David Wert
Physical Therapy

Michael Colaresi
Political Science

Boris Birmaher
Psychiatry

Dana Bobbjerg
Psychiatry

David Brent
Psychiatry

Charlotte Brown
Psychiatry

Daniel Buysse
Psychiatry

Duncan Clark
Psychiatry

Andrea Dimartini
Psychiatry

Karen Jakubowski
Psychiatry

Jessica Levenson
Psychiatry

Vishwajit Nimgaonkar
Psychiatry

Paul Pilkonis
Psychiatry

Neal Ryan
Psychiatry

Stephen Smagula
Psychiatry

Adriane Soehner
Psychiatry

Sarah Stahl
Psychiatry

Kaitlin Szanto
Psychiatry

Rachel Vaughn-Coaxum
Psychiatry

Andrea Weinstein
Psychiatry

Ellen Whyte
Psychiatry

Kirk Erickson
Psychology

Peter Gianaros
Psychology

Jamie Hanson
Psychology

Richard Jennings
Psychology

Thomas Kamarck
Psychology

Rebecca Reed
Psychology

Kathryn Roecklein
Psychology

Daniel Shaw
Psychology

Elizabeth Votruba-Drzal
Psychology

Steven E. Stern
Psychology-Johnstown

Rory Cooper
Rehabilitation Science
and Technology

Dan Ding
Rehabilitation Science
and Technology

Mary Goldberg
Rehabilitation Science
and Technology

Kyaaien Conner
Social Work

Rafael J. Engel
Social Work

Sara Goodkind
Social Work

Catherine Greeno
Social Work

Elizabeth Mulvaney
Social Work

Marlo Perry
Social Work

Helen Petracchi
Social Work

Mary Rauktis
Social Work

Daniel Rosen
Social Work

Jeffrey Shook
Social Work

Fengyan Tang
Social Work

Kathleen M. Blee
Sociology

Lisa D. Brush
Sociology

Vijai P. Singh
Sociology

Jackie Smith
Sociology

Daniel Hall
Surgery

James D. Luketich
Surgery

Aaron Brenner
University Library System

Michael Glass
Urban Studies

PROJECTS*

Access to Kidney Transplantation in Minority Populations (AKT-MP)

**PIs: Scott Beach, SRP, UCSUR
Larissa Myaskovsky, University of New Mexico**

Funder: National Institutes of Health
Period: 02/21-01/25

Telephone interviews with N=398 end-stage kidney disease patients to compare the efficacy and cost-effectiveness of two approaches to help Hispanic/Latino and American Indian patients overcome barriers to completing transplant evaluation and receiving a kidney transplant.

All Angles Survey

**PIs: Scott Beach, SRP, UCSUR
Rhaven Nelson SRP, UCSUR
Jennifer Brick Murtazashvili,
Graduate School of Public and International Affairs**

Funder: Institute of Politics (IOP)
Period: 09/23-01/24

The All Angles program has offered a unique opportunity for students to hear national leading experts offer divergent perspectives on a range of critical social, economic, and political topics. The IOP surveyed the Pitt student body to understand the issues they care about.

Caregiver Stress and Sleep Study (CARES)

**PIs: Scott Beach, SRP, UCSUR
Stephen Smagula, Psychiatry**

Funder: National Institutes of Health
Period: 10/22-present

Recruitment of caregivers of dementia patients for enrollment in a large MRI-based study. The research goal is to clarify the modifiable 24-hour behavioral and thought patterns that drive depression risk and resilience in caregivers, and understanding neurobiological markers of variability in depression risk.



Caring for OutPatients after Acute Kidney Injury (COPE-AKI) Consortium

**PIs: Scott Beach, SRP, UCSUR
Kaleab Z. Abebe, Medicine**

Funder: National Institutes of Health
Period: 10/21-09/26

The goal of the COPE-AKI Consortium will be to develop and test interventions to enhance processes of care and identify key pharmacologic and non-pharmacologic interventions to reduce morbidity among these high-risk patients. UCSUR will conduct telephone interviews with approximately 2,000 AKI patients at 30 days, 90 days, 6 months, and 1 year to assess global health related quality of life, AKI-specific health related quality of life, provider interactions, and social support.

Community HealthChoices Evaluation NSOC (National Study of Caregiving)

**PIs: Scott Beach, SRP, UCSUR
Howard Degenholtz, Health Policy and Management**

Funder: Pennsylvania Department of Human Services (Office of Long-Term Living)
Period: 07/17-12/23

Telephone interviews (~N=1000) with unpaid caregivers to participants in Community HealthChoices (CHC) - a Pennsylvania managed care program for Medical Assistance recipients - in order to evaluate the impact of CHC.

Daily Diaries for Late Life Suicide Assessment

**PIs: Scott Beach, SRP, UCSUR
Robert Keene, SRP, UCSUR
Katalin Szanto, Psychiatry**

Funder: National Institutes of Health
Period: 01/22-08/24

UCSUR assisting with morning and evening web-based assessments tracking emotional and sleep data. Collected data supports the larger research objective to understand the interacting risk and protective factors related to biological and psychosocial factors of aging that lead to the elevated suicide rate in late life.

Effects of COVID-19 on Family Caregivers

**PIs: Scott Beach, SRP, UCSUR
Janet Schlarb, SRP, UCSUR
Richard Schulz, Gerontology, UCSUR
Heidi Donovan, Nursing
A. Everette James, Healthy Policy Institute**

Julie Klinger, National Research and Training Center on Family Support, Health Sciences

Heather Tomko, National Research and Training Center on Family Support, Health Sciences

Funder: The National Institute on Disability, Independent Living, and Rehabilitation Research
Period: 04/20-present

A mixed mode (web & phone) survey of persons from a local area research registry, and persons associated with several national disability and caregiving-related organizations. The goal of the survey was to assess the impacts of the pandemic on employment, financial well-being, social interactions, health behaviors, and physical and mental health. Responses were received from over 600 family caregivers and nearly 3000 non-caregivers.

Healthy Home Lab (HHL), Registry Recruiting

PI: Scott Beach, SRP, UCSUR

Funder: Internal

Period: 07/23-09/23

The HHL is a community-based laboratory that brings together people from the community and the University of Pittsburgh to tackle major problems of aging in place and provide scalable solutions to support older adults and people with disabilities to age safely and independently at home. As part of this subgroup, registry members will periodically be contacted to see if they are interested in completing a survey or participating in a study to evaluate innovative assistive devices and products.

Identifying Predictors of Poor Health-Related Quality of Life among Pediatric Hematopoietic Stem Cell Donors

**PIs: Scott Beach, SRP, UCSUR
Janet Schlarb, SRP, UCSUR
Galen Switzer, Medicine**

Funder: National Institutes of Health

Period: 01/18-12/23

Telephone interviews with several hundred pediatric stem cell donors and their family members to gather information that will be used to design interventions to improve quality-of-life in donors and their families.

News and Information Survey

**PIs: Scott Beach, SRP, UCSUR
Rhaven Nelson, UCSUR
Sarah Goodkind, School of Social Work
Jeffrey Shook, School of Social Work**

Funder: UCSUR (Manners Award)

Period: 05/23-present

A Qualtrics web survey of UCSUR research registry members to provide a nuanced, localized understanding of residents' information sources and usage; perceptions of trust and disinformation in the region. This survey will help identify points of weakness and resilience that will complement alternative computational approaches to understanding disinformation flows. Further, our work will identify previously hidden opportunities to strengthen ties across communities and improve citizens' abilities to connect with those outside their immediate information network.

On the Move: Optimizing Participation in Group Exercise

**PIs: Scott Beach, SRP, UCSUR
Robert Keene, SRP, UCSUR
Jennifer Brach, Health and Rehabilitation Sciences**

Funder: Patient-Centered Outcomes Research Institute

Period: 10/14-present

SRP is using Interactive Voice Response (IVR) among group exercise participants to track falls, activity, and hospital visits monthly over the course of one year.

PA Link / Customer Satisfaction Survey

**PIs: Scott Beach, SRP, UCSUR
Robert Keene, SRP, UCSUR
Steven Albert, Behavioral and Community Health Sciences
Patrick Lally, Pennsylvania Department of Aging**

Funder: Pennsylvania Department of Aging

Period: 04/23-10/23

The aim of this study is two-fold. First, to study the effectiveness of text-message invitations to gather customer satisfaction data via a web-based survey. Second, to gauge customer satisfaction within the PA Link to Community Care and PA Link to Aging and Disability Resources programs. UCSUR conducted text / web-based surveys with telephone follow-up surveys of non-respondents.

Patient and Family Member Reactions to Biomarker-informed ADRD Diagnoses (PARADE)

**PIs: Scott Beach, SRP, UCSUR
Jennifer Hagerty Lingler, Nursing**

Funder: National Institutes of Health

Period: 08/22-present

UCSUR will conduct assessments of subjects before and after disclosure of amyloid imaging results. The project will enable researchers to better understand the experiences and potential psychological impacts of receiving Alzheimer's biomarker results.

PHRESH: Health & High Water

**PIs: Scott Beach, SRP, UCSUR
Robert Keene, SRP, UCSUR
Rhaven Nelson, UCSUR
Tamara Dubowitz, RAND**

Funder: National Institutes of Health
Period: 02/24-present

The overall goal of Health and High Water is to understand and find solutions for the environmental injustices experienced by residents living in predominantly Black neighborhoods in Pittsburgh, Pennsylvania. We work with community partners to ensure that we ask the right questions, disseminate our findings, and use community-based scientific research to produce effective community and policy-based solutions.

PHRESH: Pittsburgh Hill/Homewood Research on Neighborhood Change and Health

**PIs: Scott Beach, SRP, UCSUR
Robert Keene, SRP, UCSUR
Rhaven Nelson, UCSUR
Tamara Dubowitz, RAND**

Funder: National Institutes of Health
Period: 05/10-present

UCSUR provides interviewer training, programming for data collection, and data management in a study of 1,600 residents of two low-income Pittsburgh neighborhoods.

Plan for a Healthier Allegheny County Survey (PHAS)

**PIs: Scott Beach, SRP, UCSUR
Stephen Strotmeyer, Allegheny County Health Department**

Funder: Allegheny County
Period: 09/23-06/24

This is a health survey of residents as part of the Plan for a Healthier Allegheny County. The survey covers a variety of topics such as health care access, chronic disease health risk behaviors, environment, maternal and child health, and mental health and substance use disorder.

*In alphabetical order by UCSUR principal investigator (PI)

PROJECTS*

RISE Study

**PIs: Scott Beach, SRP, UCSUR
Robert Keene, SRP, UCSUR
Sarah Stahl, Psychiatry**

Funder: National Institutes of Health
Period: 01/24-present

The purpose of the RISE research study is to examine how the 24-hour rhythm of sleep and social activity relate to mental health and mood among older adults who recently lost a spouse or life partner.

State of Aging, Disability, and Family Caregiving in Westmoreland County

**PIs: Scott Beach, SRP, UCSUR
Christopher Briem, URA, UCSUR
Ellen Kinnee, URA, UCSUR
Janet Schlarb, SRP, UCSUR
Richard Schulz, Gerontology
Heidi Donovan, School of Nursing
Julie Klinger, National Research and Training Center on Family Support, Health Sciences
Bambang Parmanto, School of Health and Rehabilitation Sciences
Heather Tomko, National Research and Training Center on Family Support, Health Sciences**

Funder: Richard King Mellon Foundation
Period: 10/22-09/23

The project characterizes older adults in Westmoreland County across a broad range of dimensions including demographics, income and poverty, health, work and retirement, living arrangements, housing and neighborhood conditions, caregiving, aging service use, and overall well-being. Includes both secondary analysis of multiple data sources and primary data collection through a telephone survey.

The Healthy Allegheny County Teen Survey (HATS)

**PIs: Scott Beach, SRP, UCSUR
Elizabeth Miller, Pediatrics**

Funder: Allegheny County
Period: 02/23-11/23

Qualtrics web questionnaires that engages young people (9th to 12th grade) around critically important data about youth strengths, health behaviors, and barriers to care seeking to guide interventions for youth in schools and in their neighborhoods. This survey is a collaboration among school districts, University of Pittsburgh Adolescent and Young Adult Medicine, UPMC Children's Hospital of Pittsburgh, youth-serving community partners, the University of Pittsburgh Center for Social and Urban Research, and the Allegheny County Health Department, and The Pittsburgh Study (TPS).

The Hemodialysis Opioid Prescription Effort (HOPE) Consortium

**PIs: Scott Beach, SRP, UCSUR
Laura Dember, Perelman School of Medicine, University of Pennsylvania**

Funder: National Institutes of Health
Period: 10/22-02/24

Telephone interviews using REDCap to help assess the perception of pain on quality of life among people receiving maintenance hemodialysis.

The National Rehabilitation Research and Training Center on Family Support at the University of Pittsburgh

**PIs: Scott Beach, SRP, UCSUR
Janet Schlarb, SRP, UCSUR
Richard Schulz, Gerontology
Heidi Donovan, School of Nursing
Julie Klinger, National Research and Training Center on Family Support, Health Sciences
Bambang Parmanto, School of Health and Rehabilitation Sciences
Heather Tomko, National Research and Training Center on Family Support, Health Sciences**

Funder: The National Institute on Disability, Independent Living, and Rehabilitation Research
Period: 09/19-08/24

Through a \$4.3M grant from the National Institute on Disability, Independent Living, and Rehabilitation Research, the Center serves as a national hub that leverages modern medical research to improve the care, health, and quality of life of all persons with disabilities and the families who support them.

Wheelchair Registry

**PIs: Scott Beach, SRP, UCSUR
Robert Keene, SRP, UCSUR
Rory Cooper, Human Engineering**

Funder: Human Engineering Research Laboratories
Period: 01/14-present

Development of a system to help the Human Engineering Research Laboratories at the University of Pittsburgh efficiently and securely register and track participants in a wheelchair registry for research participation. The system involves a custom database working in conjunction with an online survey instrument for data collection and maintenance.

Widowed Elders' Lifestyle after Loss (WELL)

**PIs: Scott Beach, SRP, UCSUR
Robert Keene, SRP, UCSUR
Sarah Stahl, Psychiatry**

Funder: National Institute of Mental Health

Period: 02/15-present

Technical support for a study which is testing the feasibility of a behavioral intervention that uses technology and motivational health coaching to encourage a regular routine of healthy eating, sleeping, and physical activity among older adults who are at high-risk for depression following the death of their spouse.

Competitiveness Research

**PIs: Christopher Briem, URA, UCSUR
Vijai Singh, Sociology**

Funders: The Heinz Endowments, Consolidated Natural Gas
Period: ongoing

Projects include analysis of factors which promote regional competitiveness in Pittsburgh.

Defense Industry Analysis

**PIs: Christopher Briem, URA, UCSUR
Sabina Deitrick, URA, UCSUR**

Funders: Pennsylvania Department of Community and Economic Development (DCED), Pennsylvania Military Community Enhancement Commission
Period: 05/24-07/25

Evaluation of state economic development policies in support of defense-related industries in Pennsylvania.

Allegheny County Quality of Life Survey

PI: Sabina Deitrick, URA, UCSUR

Funder: Pittsburgh Foundation, The Heinz Endowments
Period: 12/22-04/24

Survey of over 2,000 Allegheny County residents, updating previous 2011 and 2018 surveys, with added sections and modules reflecting impacts of the COVID-19 pandemic. The survey and dissemination conducted with partner UrbanKind.

AISP Equity in Practice Learning Community Fellow

PI: Robert Gradeck, URA, UCSUR

Funder: University of Pennsylvania
Actionable Intelligence for Social Policy
Period: 06/23-12/25

Working as a fellow in the program to support two local data sharing partnerships through the learning community.

Community Health Data Explorers

PI: Robert Gradeck, URA, UCSUR

Funders: The Pittsburgh Study; Racial and Ethnic Approaches to Community Health (REACH) Project: Live Well Allegheny: Lifting Wellness for African Americans
Period: ongoing

The Western Pennsylvania Regional Data Center has developed and maintained a data tool for presenting contextual community statistics in Western Pennsylvania. The tool is now used to support multiple projects at UCSUR.

Data Justice for Pittsburgh's Black Residents

**PIs: Robert Gradeck, URA, UCSUR
Tiffany Gary-Webb, Epidemiology**

Funder: de Beaumont Foundation
Period: 10/23-10/26

Establish an initiative through the Black Equity Coalition and with the City of Pittsburgh to make data practices and infrastructures more just and inclusive. This initiative will develop a mini-public to bring community decision-making into city data stewardship and also focus on helping residents improve their health using data about the built environment.

Data Literacy

PI: Robert Gradeck, URA, UCSUR

Funder: Hillman Foundation
Period: 10/21-10/23

Development of two separate workshop series and toolkits designed to build data literacy among data stewards and new cohorts of community data ambassadors.

Developing and Implementing Plan to Strengthen the CKAN Open-source Open Data Ecosystem

**PIs: Robert Gradeck, URA, UCSUR
Eleanor Mattern, Computing and Information**

Funder: National Science Foundation (POSE Program Phase)
Period: 09/22-09/23 (Phase I);
07/24-06/26 (Phase II)

This project developed and implements a plan to strengthen the community around the CKAN software the Western Pennsylvania Regional Data Center uses in its open data work.

DISCOVER Project Contributor

PI: Robert Gradeck, URA, UCSUR

Funder: Sustainable Pittsburgh
Period: 2022-present

Working as a member of the Defining Intersectional Sustainability to Collaboratively Optimize for a Vibrant and Equitable Region (DISCOVER) initiative of Sustainable Pittsburgh. Building beyond data and measurement, DISCOVER is creating a shared, inclusive framework for measuring progress, coordinating communications, and driving interventions toward regional sustainability outcomes and policies.

First Steps and Beyond – MCH Data Ecosystem

**PIs: Robert Gradeck, URA, UCSUR
Ashley Hill, Public Health**

Funder: Allegheny Health Network
Period: 07/23-12/23

The project is designed to research the data landscape of maternal and child health (MCH) data, explore issues related to data accessibility, and uncover data use cases. This project is conducted through The Pittsburgh Study.

HouseCat – Affordable Housing Catalog

PI: Robert Gradeck, URA, UCSUR

Funder: The Heinz Endowments, Anonymous Funder
Period: 03/20-present

Development of a data tool and pipeline to provide information about subsidized housing to practitioners and policymakers working to preserve and expand the supply of affordable housing in Allegheny County.

Improving Community Engagement in the Design, Collection, and Use of Community Level Data and Small Area Estimates to Address Structural Determinants of Health

**PIs: Robert Gradeck, URA, UCSUR
Jamil Bey, UrbanKind Institute (through the Black Equity Coalition)**

Funder: CDC Foundation
Period: 06/22-11/23

Project to improve the quality, efficiency, and utility of health surveys, such as BRFSS and PRAMS. Part of a cohort of four other peer organizations from around the U.S. to improve the use of small-area sample estimates included in the PLACES dataset. Convened local community members and researchers in conversations about inclusive research practices through this project.

Postpartum Mothers Mobile Study (PMOMS) Racism Indicators

**PIs: Robert Gradeck, URA, UCSUR
Ellen Kinnee, URA, UCSUR
Dara Mendez, Epidemiology**

Funder: National Institutes of Health
Period: 06/21-06/24

Assembled a collection of community-level indicators related to structural racism. This data will provide community context to responses collected through the Postpartum Mothers Mobile Study (PMOMS) survey. Additionally, a database of spatial structural racism measures for Allegheny County was generated to assess the neighborhood environment for PMOMS participants

Supporting Regional Digital Equity Initiatives

PI: Robert Gradeck, URA, UCSUR

Funder: Hillman Foundation
Period 10/23-10/24

Supporting regional efforts to enhance digital equity by creating a strategy for how people playing different roles in the effort can create and adopt data standards and consistent performance measures.

*In alphabetical order by UCSUR principal investigator (PI)

PROJECTS*

Synthetic Data

PI: Robert Gradeck, URA, UCSUR

Funder: N/A

Period: 06/22-06/24

The Urban Institute is developing software to create synthetic data and is partnering with UCSUR and Allegheny County on a pilot project to create synthetic data from Allegheny County human service records. UCSUR is playing an advisory role on the project.

Western Pennsylvania Regional Data Center

PI: Robert Gradeck, URA, UCSUR

Funders: Allegheny County, City of Pittsburgh, The Heinz Endowments, Hillman Foundation, Richard King Mellon Foundation, University of Pittsburgh
Period: ongoing

The Western Pennsylvania Regional Data Center (WPRDC) supports key community initiatives by making public information easier to find and use. The WPRDC is managed by UCSUR, and is in partnership with Allegheny County and the City of Pittsburgh.

Barriers to the Use of Disease-Modifying Treatments in Sickle Cell Disease: Survey and Focus Groups of Patients, Caregivers, and Providers

**PIs: David Halpern, QDAP, UCSUR
Kevan Schultz, QDAP, UCSUR
Terri Newman, Pharmacy**

Funder: American Society of Hospital Pharmacists
Period: 08/22-12/23

Moderation, transcription, and coding of focus groups with patients and providers assessing drug treatment in sickle cell patients.

Caregiver Expectations of Pediatric Patient Portals

**PIs: David Halpern, QDAP, UCSUR
Kelsey Schweiberger, Pediatrics**

Funder: CHP Scholar Funding Mechanism
Period: 09/23-02/24

Transcription of interviews with parents and legal caregivers, assessing their expectations, attitudes, barriers, and facilitators regarding healthcare communication, specifically pediatric patient portal use.

Enhancing DPT Education: Bridging Perspectives for Curriculum Excellence

**PIs: David Halpern, QDAP, UCSUR
Kevan Schultz, QDAP, UCSUR
David Wert, Physical Therapy**

Funder: University of Pittsburgh
Department of Physical Therapy
Period: 04/24-present

Data collection, audio transcription, and coding of focus groups with various stakeholders regarding their insight into the University of Pittsburgh's Department of Physical Therapy curriculum for preparing competent clinicians.

Exploring the Barriers and Facilitators to Symptom Monitoring and Reporting in Head and Neck Cancer Patients

**PIs: David Halpern, QDAP, UCSUR
Kevan Schultz, QDAP, UCSUR
Marc Nielsen, Medicine**

Funder: Betty Irene Moore Fellowship for Nurse Leaders and Innovators, UC Davis
Period: 02/24-present

Data collection, audio transcription, and coding of qualitative interviews with medical providers about their practices' symptom monitoring and symptom management for head and neck cancer.

Goodwill NWNC DEIB Focus Groups

**PIs: David Halpern, QDAP, UCSUR
Kevan Schultz, QDAP, UCSUR
J'nai Adams, Goodwill NWNC**

Funder: Goodwill NWNC
Period: 12/23-06/24

Consultation regarding focus groups/ data collection for Goodwill NWNC's DEIB strategic plan, as informed by findings from a DEIB survey completed in November 2023, with an aim to bolster Goodwill NWNC's DEIB efforts.

Investigating Intimate Partner Violence in the Context of Sleep Among Survivors

**PIs: David Halpern, QDAP, UCSUR
Kevan Schultz, QDAP, UCSUR
Karen Jakubowski, Psychiatry**

Funder: Steven D. Manners Research Development Awards
Period: 01/23-02/24

Transcription of interviews with women with current or past history of Intimate Partner Violence (IPV), exploring the concept of violence in the context of sleep.

Mobile Health Intervention for Rural Atrial Fibrillation

**PIs: David Halpern, QDAP, UCSUR
Kevan Schultz, QDAP, UCSUR
Jared Magnani, Medicine**

Funder: National Institutes of Health/
National Heart, Lung, and Blood Institute
Period: 03/22-08/23

Moderation, transcription, and coding of focus groups with stakeholders about their lived experiences as persons with atrial fibrillation living in rural communities.

Nurse Practitioner Integration into Older Adult Primary Care

**PIs: David Halpern, QDAP, UCSUR
Kevan Schultz, QDAP, UCSUR
Josh Porat-Dahlerbruch, Nursing**

Funder: University of Pittsburgh School of Nursing Research Catalyst Award
Period: 02/24-08/24

Transcription of qualitative interviews investigating the integration of NP's into older adult primary care settings, and soliciting feedback on policy interventions.

Effects of Outdoor Artificial Light at Night on Circadian Activity Rhythms in Adolescents Versus Adults

**PIs: Ellen Kinnee, URA, UCSUR
Adriane Soehner, Psychiatry**

Funder: University of Pittsburgh Clinical and Translational Science Institute
Period: 04/23-11/24

Conduct analyses in an existing harmonized sample of adolescents and young adults (aged 9-25) from the Neuroimaging and Pediatric Sleep Databank. Primary aims are to: (1) examine associations between outdoor ALAN exposure and circadian activity rhythm disruption; and (2) determine the extent to which associations between outdoor ALAN exposure and circadian disruption varies over adolescent development.

Geospatial Analysis of Disparities in Access to and Use of Metabolic Disease Specialty Care

**PIs: Ellen Kinnee, URA, UCSUR
Margaret Zupa, Medicine**

Funder: University of Pittsburgh Clinical and Translational Science Institute
Period: 04/23-03/24

This study will newly link geographic data sources with patient-level health information through geospatial analysis, in order to: (1) assess the prevalence and magnitude of barriers to metabolic disease specialty care in the form of drive time, public transportation access, and broadband internet access for adults with T2D and ASCVD; and (2) evaluate the impact of these factors on specialty metabolic disease care use before and after widespread availability of telemedicine.

Pediatric Health and Extreme Weather – Health Effects of Ambient Temperature (PHEW-HEAT)

PIs: Ellen Kinnee, URA, UCSUR

Funder: National Institutes of Health
Period: 08/19-04/24

This research will overcome gaps in child health and heat research by combining spatially and temporally resolved estimates of surface temperature in New York state with large statewide administrative clinical datasets. Further, social and co-morbidity effect modifiers will be considered in order to identify key subpopulations and modifiable risk factors across a rural-urban gradient. The design is tailored to work in concert with existing heat action plans used by municipal level health agencies such that those plans can most easily accommodate updated findings.

The Association of Patient Portal Use with Cardiovascular Health Outcomes at a Large Academic Medical System

**PIs: Ellen Kinnee, URA, UCSUR
Amber Johnson, Medicine**

Funder: UPMC Internal Funds
Period: 11/22-present

Conduct a retrospective cross-sectional analysis using health records of patients seen at UPMC to analyze the relationship between use of telehealth and cardiovascular hospital admissions, procedures, and mortality.

*In alphabetical order by UCSUR principal investigator (PI)



PROJECTS*

Understanding Pediatric Susceptibility Across Temperature and Environment in New York (UPSTATE NY)

PI: Ellen Kinnee, URA, UCSUR

Funder: U.S. Environmental Protection Agency
Period: 06/22-06/25

Identify community stressors and resilience-enhancing assets that shape relationships between climate change-related exposures [heat, ozone (O3), fine particulate matter (PM2.5)] and child health. Particularly interested in assets which may bolster children's resilience to climate-related exposures in environmental justice (EJ) communities across Upstate NY.

Civic Switchboard

**PIs: Elizabeth Monk, URA, UCSUR
Eleanor Mattern, Computing and Information**

Funder: Institute of Museum and Library Services
Period: 10/17-07/25

Civic Switchboard aims to develop the capacity of academic and public libraries in civic data ecosystems. This project encourages partnerships between libraries and local data intermediaries, which will better serve data users, further democratize data, and support equitable access to information. The project will create a toolkit for libraries interested in expanding (or beginning) their role around civic information. Civic Switchboard is a partnership of UCSUR, the University Library System at the University of Pittsburgh, and the Carnegie Library of Pittsburgh.

Engagement and Outreach Map

**PIs: Liz Monk, URA, UCSUR
Steven Saylor, URA, UCSUR**

Funder: University of Pittsburgh Office of Engagement and Community Affairs
Period: ongoing

Continued development of the University's Community Engagement Map, which serves as a catalog of information about university-community partnerships.

Human Services Center Mon Valley Community Profiles

PI: Elizabeth Monk, URA, UCSUR

Funder: Human Services Center Mon Valley
Period: 01/24-11/24

Provide data profiles to assist organizations in planning, community engagement, and service delivery.

Westmoreland County Community Profiles

PI: Elizabeth Monk, URA, UCSUR

Funder: Community Foundation of Westmoreland County
Period: 01/24-01/25

Provide data profiles and workshops to assist organizations in planning, community engagement, and service delivery.

Disinformation Lab

**PIs: Steven Saylor, URA, UCSUR
Ross Reilly, URA, UCSUR
Michael Colaresi, Political Science**

Funder: Pitt Cyber Accelerator Grant
Period: 2022-present

Providing support to the Disinformation lab by building tools to track disinformation in social media.

ARM: Improving Balance and Mobility to Prevent Future Fractures in Older Adults

**PIs: Kevan Schultz, QDAP, UCSUR
David Halpern, QDAP, UCSUR
Christine McDonough, Health and Rehabilitation Sciences**

Funder: Academy of Orthopedic Physical Therapy
Period: 08/23-05/24

Transcription and qualitative coding of interviews and focus groups with stakeholders (orthopedic providers/administrators/therapists, as well as recruited patients) regarding referral and uptake of an evidence-based balance exercise for older adults with a recent upper extremity fracture, in order to prevent subsequent fractures.

Assessing the Risk Environment of Persons with Xylazine Wounds

**PIs: Kevan Schultz, QDAP, UCSUR
David Halpern, QDAP, UCSUR
Raagini Jawa, Medicine
Margaret Shang, Medicine**

Funder: National Institute on Drug Abuse
Period: 03/24-09/24

Coding of interviews with hospitalized patients with xylazine/drug-related wounds (pilot data).

Considering Identity and Language in Clinical Diagnostic Interviews for Depression with Youth from Diverse Backgrounds

**PIs: Kevan Schultz, QDAP, UCSUR
David Halpern, QDAP, UCSUR
Rachel Vaughn-Coaxum, Psychiatry**

Funder: Faculty Advancement Award (Dean's Office)
Period: 01/24-present

Transcription and coding of qualitative interviews and focus groups focused on identifying variations in the language that adolescents use to describe their symptoms of depression across gender and racial identities, in order to evaluate how that language differs from standard psychiatric language used by interviewers.

Developing a Culturally-Relevant Digital Health Intervention to Treat Binge Eating and Obesity

**PIs: Kevan Schultz, QDAP, UCSUR
David Halpern, QDAP, UCSUR
Rachel W. Goode, University of North Carolina at Chapel Hill**

Funder: National Institute of Diabetes, Digestive, and Kidney Diseases
Period: 04/23-11/23

Transcription and coding of interviews with Black women who binge eat, in order to identify barriers and facilitators to detecting and treating binge eating; to adapt a validated eating behavior and nutrition intervention guided by stakeholder input; and to use Semblie (a UNC-hosted, no-cost online platform that provides tools to build, deliver, and track digital health interventions) to construct a digital health tool to treat binge eating and prevent weight gain in Black women, the feasibility and preliminary efficacy of which will be examined in a pragmatic clinical trial.

Stakeholder Engagement Analyses of Residual Risk Program for National Emission Standards for Hazardous Air Pollutants (NESHAP)

**PIs: Kevan Schultz, QDAP, UCSUR
David Halpern, QDAP, UCSUR
Tina Ndoh, Environmental and Occupational Health**

Funder: University of Pittsburgh
Momentum Funds
Period: 05/23-04/24

Coding public comments and agency response to comments (RTC's) in order to assess effectiveness of community engagement in influencing environmental health standards.

Women's Acceptance and Receptiveness to a Formalized Peer Support Intervention to Promote CPAP Adherence

**PIs: Kevan Schultz, QDAP, UCSUR
David Halpern, QDAP, UCSUR
Jonna Morris, Nursing**

Funder: Internal/Start-up
Period: 04/23-12/23

Coding of interviews and focus groups designed to improve understanding of the challenges women have initiating and using CPAP, their needs for support during this process, and potential receptiveness to a peer support mentor.

*In alphabetical order by UCSUR principal investigator (PI)

PUBLICATIONS 2023-24

JOURNALS

- Beach, S.R., Czaja, S.J., & Schulz, R.** (2023). Novel methods for assessment of vulnerability to financial exploitation (FE). *Journal of Elder Abuse & Neglect*, 35(4-5), 151-173.
- Buckwalter, D.W.** (in press). Small area classification in urban geography: A review of multidimensional methods. *Middle States Geographer*.
- Chou, A., Beach, S.R., Lutz, B., Rodakowski, J., Terhorst, L., & Freburger, J.K.** (2024). Moderating effects of informal caregiving on the relationship between activities of daily living limitations and adverse outcomes in stroke survivors. *Stroke*, 55(6), 1554-1561.
- Chou, A., Lutz, B.J., Beach, S.R., & Freburger, J.K.** (2023). Informal caregiver training to address functional mobility limitations of stroke survivors: A scoping review. *Topics in Stroke Rehabilitation*, 30(7), 700-713.
- Engel, R., Jarrott, S., & Rodzwick, C. (Eds.)** (2023). *Journal of Intergenerational Relationships* (Vol. 21). Philadelphia, PA: Taylor & Francis.
- Fields, B., Carbery, M., Schulz, R., Rodakowski, J., Terhorst, L., & Still, C.** (2023). Evaluation of face validity and acceptability of the Care Partner Hospital Assessment Tool. *Innovation in Aging*, 7(2), igad011.
- Friedman, E.M., Beach, S.R., & Schulz, R.** (2023). Out-of-pocket health care spending at older ages: Do caregiving arrangements matter? *Journal of Applied Gerontology*, 42(5), 1013-1021.
- Ganguli, M., Jacobsen, E., Song, R., Wood, I., Kinnee, E.J., Hughes, T.F., Snitz, B.E., & Chang, C.C-H.** (in press). Social determinants of health and mild cognitive impairment in a diverse community sample. *Journal of the American Geriatrics Association*.
- Humphrey, J.L., Kinnee, E.J., Robinson, L.F., & Clougherty, J.E.** (2024). Disentangling impacts of multiple pollutant exposures on acute cardiovascular events in New York City: A case-crossover analysis. *Environmental Research*, 242, Article 117758.
- Jarrott, S., Swim, G. & Rodzwick, C. (Eds.)** (2024). *Journal of Intergenerational Relationships*, 22. Philadelphia, PA: Taylor & Francis.
- Jhamb, M., Steel, J.L., Yabes, J.G., Roumelioti, M., Erickson, S., Devaraj, S.M., Vowles, K.E., Vodovotz, Y., Beach, S., Weisbord, S.D., Rollman, B.L., & Unruh, M.** (2023). Effects of technology assisted stepped collaborative care intervention to improve symptoms in patients undergoing hemodialysis: The TĀCcare Randomized Clinical Trial. *JAMA Internal Medicine*, 183(8), 795-805.
- Kim, H., Beach, S., Friedman, E., Donovan, H., & Schulz, R.** (2023). Effects of childcare, work, and caregiving intensity on male and female family caregivers. *Journal of Gerontology: Psychological Sciences*, 78(6), 959-968.
- Klinedinst, T.C., Beach, S., Donovan, H., Rodakowski, J., & Campbell, G.** (2023). The relationship between personal and contextual factors and participation restriction in mid-life caregivers. *Journal of Aging and Health*, 35(7-8), 566-576.
- Mann, H.K., Streiff, M., Schultz, K.C., Halpern, D.V., Ferry, D., Johnson, A.E., & Magnani, J.W.** (2023). Rurality and Atrial Fibrillation: Patient Perceptions of Barriers and Facilitators to Care. *Journal of the American Heart Association*, 12(21). Volume 12, Number 21.
- Perepezko, K., Shaffer, K., Beach, S., Rolle, N., Fields, B.** (2024). Effects of caregiver sleep disturbances on relationship quality with their care recipient. *The Journals of Gerontology: Series B*, 79(1), gbad137.
- Rodzwick, C.** (2023). In Honor of my Intergenerational Mentor and Friend, Dr. Sally Newman. *Journal of Intergenerational Relationships*, 1-6.
- Sharma, R. Humphrey, J.L., Frueh, L., Kinnee, E.J., Sheffield, P.E., & Clougherty, J.E.** (2023). Neighborhood violence and socioeconomic deprivation influence associations between acute air pollution and temperature on childhood asthma in New York City. *Environmental Research*, 231(3), 116235.
- Teaster, P.B., Roberto, K.A., Savla, J., Du, C., Du, Z., Atkinson, E., Shealy, E.C., Beach, S., Charness, N., & Lichtenberg, P.A.** (2023). Financial fraud of older adults during the early months of the COVID-19 Pandemic. *The Gerontologist*, 63(6), 984-992.

BOOKS / BOOK CHAPTERS / OTHER PUBLICATIONS

Deitrick, S., & Glass, M. (2023). Confronting the Pittsburgh Narrative: Renaissance, Renewal, and the Tension of Authenticity. In A. Cole, A. Healy, & C. Morel (Eds.), *The Role of Urban Narratives: Governing the (Re)Making of Cities*. Edward Elgar Publishing.

Heckhausen, J., Wrosch, C., Shane, J., & Schulz, R. (in press). Motivation and goal development across the adult lifespan: Goal engagement, disengagement, and adjustment. In M. Lachman (Ed.), *APA Handbook of Adult Development and Aging*.

Kempton, L., Marlow, D., Deitrick, S., Glass, M.R., & Travis, R. (2024). Swimming Against the Tide: The Role for Social Sciences and Humanities in Contributing to a More Inclusive Approach to Innovation in Post-industrial Cities. In F. Spigarelli, L. Kempton, & L. Compagnucci (Eds.), *The Future of Work and Employment*. Edward Elgar Publishing.

TECHNICAL REPORTS

Beach, S.R., Briem, C., Schlarb, J., James, E., & Hughes, M. (2023). State of Aging, Disability, and Family Caregiving in Westmoreland County. UCSUR and Health Policy Institute, University of Pittsburgh.

Briem, C. (June 2024). Comparison of 2008-2012 and 2018-2022 American Community Survey Estimates for the City of Pittsburgh and Neighborhoods. UCSUR, University of Pittsburgh.

Briem, C. (June 2024). Comparison of 2008-2012 and 2018-2022 American Community Survey Estimates for Allegheny County Municipalities. UCSUR, University of Pittsburgh.

Deitrick, S., Beach, S., Kinnee, E., Schlarb, J., Accurso, C., Nelson, R., Briem, C., Bey, J., & Bey, Q. (April 2024). Results of the 2023 Allegheny County Quality of Life Survey: Summary and Multiple Supporting Reports. UCSUR, University of Pittsburgh; UrbanKind. https://ucsur.pitt.edu/allegheny_county_qol_2023.php.

Deitrick, S., & Briem, C. (May 2024). Corporate Investments in Single-Family Residential Properties in Allegheny County: Recent Impacts. UCSUR, University of Pittsburgh.



University Center for Social and Urban Research

3343 Forbes Ave.
Pittsburgh, PA 15260

412-624-5442
Fax: 412-624-4810
ucsur@pitt.edu
ucsur.pitt.edu

To learn more about UCSUR's
survey research capabilities,
programs, ongoing projects,
and staff, visit our website at:
ucsur.pitt.edu

Follow us on X: [@PittCSUR](https://twitter.com/PittCSUR)