

ANNUAL REPORT JULY 1, 2018-JUNE 30, 2019

UNIVERSITY CENTER FOR SOCIAL AND URBAN RESEARCH



CONTENTS

1. Who We Are
3. Message From the Interim Director
4. Programs
5. UCSUR as a Hub for Social, Behavioral, Economic, and Health Sciences Research
6. What We Do: Center Resources
 - Survey Research Services
 - Urban and Regional Analysis Services
 - Gerontology Services
 - Qualitative Data Analysis Services
 - Acquisition and Management of Secondary Data
 - Information Technology Infrastructure
 - Program Evaluation Services
16. Faculty Development Awards
17. Core Staff
 - Faculty Associates
19. Projects
25. Publications 2018-19

WHO WE ARE

University Center for Social and Urban Research (UCSUR)

The mission of UCSUR is to work collaboratively to conduct interdisciplinary research that improves communities and addresses social, economic, health, and policy issues most relevant to society. UCSUR carries out this mission by (1) providing research support infrastructure and training; (2) conducting original research in a few focused areas, including urban impact analysis, survey methodology, and psychosocial aspects of aging; and (3) enhancing access to local and national policy-relevant data.



GOALS

The University Center for Social and Urban Research (UCSUR) was

established in 1972 to serve as a resource for researchers and educators interested in the basic and applied social and behavioral sciences. UCSUR promotes and coordinates interdisciplinary research focused on the social, economic, and health issues most relevant to our society. Specific goals of UCSUR fall into four broad domains:

1. Provide state-of-the-art research support services and infrastructure for investigators interested in interdisciplinary research in public policy and the social, behavioral, and health sciences (engage in research of impact; build foundational strength).

2. Support the community service mission of the University by providing data and conducting policy analysis for the region (strengthen communities; engage in research of impact).

3. Develop nationally recognized research programs within the Center in a few selected areas (currently family caregiving; elder abuse; and technology and aging) (engage in research of impact).

4. Support the teaching mission of the University by offering interdisciplinary training and mentoring diverse graduate students, postdoctoral fellows, and junior faculty (advance educational excellence; embrace diversity and inclusion).

To achieve the strategic goals of the Center, UCSUR maintains a permanent research infrastructure available to faculty and the community with the capacity to:

1. Conduct all types of survey research and quantitative data analysis

2. Acquire, manage, store, and analyze secondary and administrative data sets including census data and data of unique local interest

3. Obtain, format, and analyze spatial data

4. Carry out regional econometric modeling

5. Design and carry out descriptive, evaluation, and intervention studies

6. Conduct qualitative data collection and analysis

Our research infrastructure is organized under four core programs:

1. Survey Research Program (SRP), which is responsible for all aspects of survey research and quantitative data analysis;

2. Urban and Regional Analysis Program (URA), which acquires, manages, and analyzes secondary and administrative data sets; does regional econometric modeling; and obtains, formats, and analyzes spatial data;

3. Gerontology Program, which provides expertise in the design, measurement, and analysis of descriptive, evaluation, and intervention studies focused on older adults; and

4. Qualitative Data Analysis Program (QDAP), which supports the collection and analysis of open-ended text data using rigorous computer-based methods.



MESSAGE FROM THE INTERIM DIRECTOR

During the past year, Pitt's Center for Social and Urban Research has produced over 40 peer-reviewed publications receiving approximately 5,000 Google scholar citations, and participated in over 70 funded grants, the majority of which involve multidisciplinary collaborations.

I am happy to update the University community on the recent activities and accomplishments of the University Center for Social & Urban Research (UCSUR).

During the past year, UCSUR has produced over 40 peer-reviewed publications receiving approximately 5,000 Google scholar citations, and participated in over 70 funded grants, the majority of which involve multidisciplinary collaborations. UCSUR received \$1,500,000 in external funding for multiple research infrastructure support projects through the Survey Research Program (SRP) in collaboration with University faculty across schools and departments. We continued our nationally recognized research in family caregiving, financial exploitation of older adults, and technology and aging. UCSUR also helped cofound and provides leadership for the Center for Caregiving Research, Education and Policy with the Health Policy Institute and Schools of Nursing, Public Health, and Medicine, which involves approximately 30 affiliated faculty representing a range of health and behavioral science disciplines. UCSUR has also continued to be the go-to resource for data and analysis to inform regional public policy through the Western Pennsylvania Regional Data Center (WPRDC) and the PittsburghTODAY regional benchmarking initiative. These resources contain over 300 downloadable datasets (many updated on a frequent basis) and 500 indicators covering more than 20 topic areas. The WPRDC also contains several data extraction and visualization tools that enhance user access and support statistical analyses. UCSUR's Environmental Policy Initiative, part of the Urban and Regional Analysis (URA) program, continues to expand with projects on lead water line detection, integrating engineering and social science methods and modeling.

Finally, UCSUR continues to build its permanent research infrastructure with the capacity to conduct all types of survey research; obtain, format, and analyze spatial data; acquire, manage, and analyze large secondary and primary data sets; carry out regional econometric modeling; and carry out qualitative research. Highlights include our regional research registry with more than 8,000 local residents (including 1,200 family caregivers) willing to participate in research studies; continued refinement of the UCSUR SRP in-house longitudinal multi-mode survey data management and collection system; and continued expansion of our geographic Information System (GIS) capabilities.

I hope this report will give you a sense of the value that UCSUR provides to the University and the broader community.



Scott R. Beach, PhD

PROGRAMS

In response to faculty interests and current domestic policy issues, UCSUR develops interdisciplinary research programs that address regional and national policy issues. The resources described in the next section are provided by one or more of these programs. As new policy issues emerge, UCSUR is prepared to facilitate and coordinate the development of additional programs identified by interested faculty. Existing research programs include the following:

Projects conducted in all these areas illustrate the Center's commitment to enhancing scientific understanding of social phenomena while generating information for improved policymaking in both the public and private sectors.

Gerontology

Initiates, coordinates, and facilitates research on aging. In collaboration with faculty in more than a dozen different disciplines (e.g., psychiatry, anesthesiology, rheumatology, nursing, epidemiology, engineering, computer science), program faculty and staff play an active role in developing proposals for research focused on psychosocial, behavioral, cognitive, and physical aspects of aging.

Qualitative Data Analysis

Offers a rigorous approach to qualitative data collection and analysis, including focus group facilitation; in-depth interviewing; cognitive interviewing; analysis of textual or website information; audio and video transcription and analysis; data preparation, cleaning, and management; codebook development and testing, coding and multi-coder adjudication; reliability and validity reporting; and results analysis and reporting.

Survey Research

Maintains a highly experienced staff of survey professionals, trained interviewers, and data management specialists. Services are available to faculty, staff, and students throughout the University and to local, state, and federal agencies and others working in the public interest. Offers the capability to execute any or all phases of a survey research project, including sample design, questionnaire construction, data collection, data processing, statistical analysis, and reporting. Features a 45-line telephone bank for Computer-Assisted Telephone Interviewing (CATI).

Urban and Regional Analysis

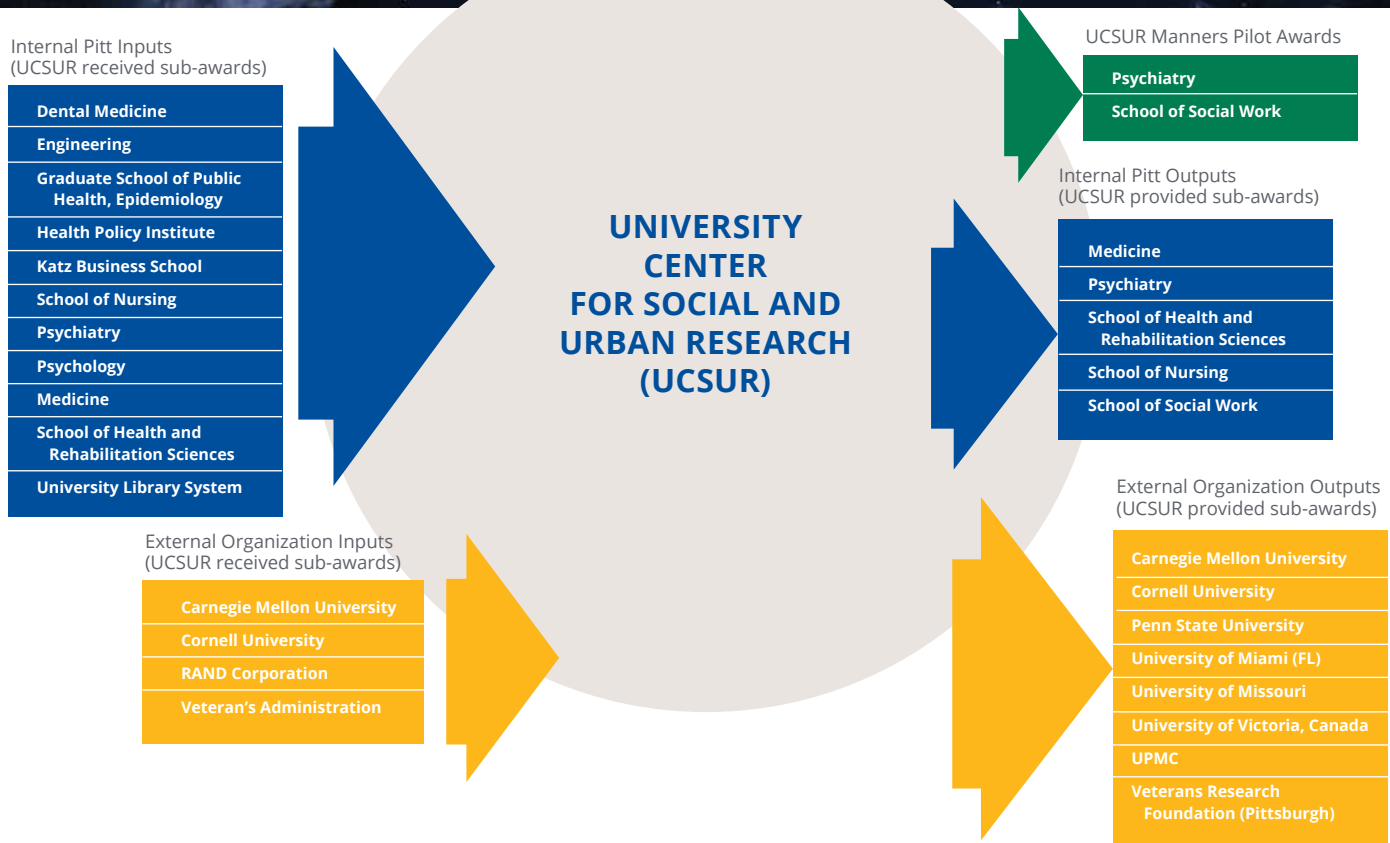
Promotes scholarly analysis of urban and regional development through multidisciplinary research and technical assistance in local, national, and international issues. Furthers our understanding of the causes and consequences of regional economic development and social change, enhances the analytic basis for public policy decisions and civic engagement, aids in the evaluation of policy alternatives, and applies GIS and neighborhood indicators to understand community revitalization.

UCSUR:

A hub for social, behavioral, economic, and health sciences research

UCSUR:

A research collaborative network (FY 2019)



WHAT WE DO:

Center Resources

SURVEY RESEARCH SERVICES (SRP)

UCSUR provides survey research services through the program. SRP maintains a highly experienced staff of survey professionals, trained interviewers, and data management specialists. SRP services are available to faculty, staff, and students throughout the University and to local, state, and federal agencies and others working in the public interest.

SRP is able to carry out any or all phases of a survey research project, including sample design, questionnaire design, data collection, data processing, statistical analysis, and reporting. SRP staff have the training and experience to design scientifically valid studies customized to client research needs. SRP can help clarify study objectives and provide advice on how to obtain the highest quality data within available resource constraints. More specifically, SRP provides assistance in the following areas:

Sample Design

SRP staff provide advice on sampling methodology and sample size to meet study objectives and budget. Services include in-house development of specialized sample frames, or consultation with commercial sampling firms to obtain an appropriate sample. Examples of the types of samples provided include:

- **Online panel/research registry samples:** Geographically and demographically targeted samples using commercially available web panels or in-house research registries. These are also useful for cost-effective samples of rare populations.

- **Random digit dialing (RDD) samples:** particularly suited for telephone survey of the general population, computer-generated telephone numbers are used to target specific geographic areas, including both listed and unlisted phone numbers. RDD sampling for any region of the United States is available.
- **Targeted/listed samples:** samples to reach specific subgroups or rare populations. These are useful for telephone recruitment of participants for larger studies. They are also used for supplementing RDD samples with oversamples of rare populations.

Data Collection Methodology

SRP staff can provide:

- Advice on the most productive and cost-effective method of data collection (mail, telephone, in-person, or internet/web-based), and the effective use of technology for surveys.
- Specification of procedures for maximizing response rates within the framework of available resources. For example, recommended number of attempts to contact respondents, securing initial cooperation, following-up on incomplete interviews, converting refusals into acceptances, and use of mixed-mode designs and incentives.

Questionnaire Development

SRP staff can provide assistance with all aspects of the development of a reliable and valid instrument, including:

- Writing, formatting, and ordering questions
- Asking sensitive questions
- Instrument pre-testing

Interviewing and Data Collection

SRP conducts local, regional, and national telephone and mail surveys with both general and special populations, as well as in-person surveys in the Southwestern Pennsylvania region. SRP also conducts internet/web-based surveys.

SRP relies on a pool of experienced interviewers for telephone and in-person surveys. These include both undergraduate and graduate students, as well as non-students under the management of senior fieldwork supervisors.

Interviewer training and quality control:

Interviewers are trained in general and project-specific interviewing techniques, such as maintaining objectivity, reading questions as written, and securing respondent cooperation. Training involves a combination of lecture, written handouts, video instruction, and role-playing. Interviewers are continuously monitored during data collection for quality assurance, and periodic re-training sessions occur as necessary.

Computer-assisted telephone interviewing (CATI):

A 45-line phone bank at UCSUR is dedicated to a computer-assisted telephone interviewing system. Interviewers read questions as they appear on the screen and enter the respondents' answers directly into the computer. CATI allows complex question contingencies, sample management, and call scheduling to be handled automatically.

RDD cell phone surveys:

UCSUR has experience conducting random digit dialing (RDD) cell phone surveys in order to supplement traditional landline RDD telephone surveys. This methodology insures inclusion of cell-phone only households, estimated at 50 percent of the U.S. population (and growing). Cell-phone only households are typically younger, more likely to be employed, and more



We advise on the most productive and cost-effective method of data collection (mail, telephone, in-person, or internet/web-based), and the effective use of technology for surveys.

ethnically diverse, and their exclusion can result in significant biases in landline-only surveys.

Computer-assisted personal interviewing (CAPI):

With this type of interview an interviewer, using a laptop computer, reads questions to the respondent and then enters the answers directly into a database on the laptop computer. CAPI is programmed similar to computer-assisted telephone interviewing and provides the same advantages (automated skips, randomized experiments, etc.).

Audio computer-assisted self-interviewing (ACASI):

With this application a respondent operates a computer, the computer displays the questions on screen and plays recordings of the questions to the respondent who enters answers directly into a database on the computer. A respondent typically uses headphones with our ACASI solutions in order to maintain response privacy. ACASI enhances perceived privacy for sensitive questions and is ideal for less literate populations. ACASI is similar to CATI, CAPI, and CASI in programming requirements and function.

Interactive voice response (IVR):

IVR is an automated system where a recorded voice administers survey questions/scripts and detects voice and keypad inputs from a home phone or cell phone. Privacy is enhanced by switching to IVR from a

live interviewer for the administration of sensitive questions. IVR is also ideal for ecological momentary assessment (EMA).

Web-based data collection:

SRP has the capability to conduct web-based surveys and other online data collection and management. UCSUR operates secure servers that host such activities.

Mobile device data collection:

SRP has capabilities to design applications for the collection of data on smartphones and other mobile devices. These include tools for the collection and integration of self-reported survey, location tracking, and physiological monitoring data for real-time ecological momentary assessment studies.

Additional data collection services:

Telephone surveys using paper/pencil methodology, mail surveys, and in-person surveys in the Southwestern Pennsylvania region, are also available.

Surveys of special and hard-to-reach populations:

UCSUR has conducted numerous surveys of special, hard-to-reach populations, including numerous clinical populations, children, and ethnically and linguistically diverse samples. UCSUR has conducted interviews in Spanish, Chinese, and Korean and has the capability to conduct international surveys.

Research Registry

UCSUR has developed and maintains an IRB-approved research registry currently containing more than 8,000 local residents who have agreed to be contacted for possible surveys and other research studies. The participants are recruited to the registry on an ongoing basis from the pool of respondents to UCSUR-conducted population-based telephone surveys. The registry includes detailed contact information and demographic information including age, gender, race, education level, marital status, household composition, employment status, and income. This allows for targeting of participants for studies with specific eligibility requirements. External investigators can contract with SRP to access the registry for study recruitment. Over the past year, SRP has added an indicator for participants who are providing unpaid care to an ill or disabled family member or friend. To date, more than 1,200 family caregivers have been identified who are willing to participate in research studies.

Participant Recruitment and Screening

In addition to assisting with primary survey data collection, SRP can assist researchers with locating, contacting, screening, consenting, and scheduling research participants. We use a variety of sample sources (e.g., telephone samples, research registries) and methods (telephone, web, social media) to cost-effectively recruit and enroll research participants for observational, clinical, and intervention studies.

WHAT WE DO:

Center Resources

Data Management

Using a variety of computer programs, languages, database management software, and operating systems, SRP staff are available to perform a number of data management functions, including database development, editing, coding, and survey data processing. SRP staff also have the capability to integrate survey respondent data with GIS-based spatial data, and with other secondary data sources.

Statistical Analysis of Survey Data

SRP staff can perform statistical analyses of survey data, ranging from simple tabulations to relatively complex statistical modeling using a variety of statistical packages. Analytic capabilities include:

- Descriptive statistical analyses of survey responses, including calculations of sampling error, and statistical weighting adjustments for unequal selection probabilities and non-response
- Cross-classification analyses with demographic or other predictive factors
- Multivariate analyses, including ANOVA, factor analysis, linear and non-linear regression, logistic regression, categorical methods, and structural equation modeling
- Longitudinal analyses

Report Preparation and Presentation

SRP staff have experience in the production of a variety of reports, including:

- Simple tabulations
- Executive summaries
- In-depth narrative reports
- Oral presentations of results to interested parties



URBAN AND REGIONAL ANALYSIS SERVICES

UCSUR's Urban and Regional Analysis Program (URA) analyzes major economic and demographic trends in the Pittsburgh region in national

and international contexts. URA brings together faculty, research staff, and graduate students to examine important urban and regional issues, with the results disseminated widely to state and regional policymakers, local officials, and community and economic development organizations. URA also partners with other researchers and organizations across the globe to advance urban and regional knowledge. URA's research extends from regional development to community change and examines their consequences for regional restructuring, equity implications, and policy analysis. In addition to the performance of the regional economy, specific strategic economic sectors are examined through in-depth studies and their implications for workforce development and job creation. The program also fosters the development of new methods of data collection and analysis. URA research is published in scholarly journals and technical reports and has been an important element of UCSUR's commitment to providing regional economic development analysis to both the academic community and the Pittsburgh region. Through URA's work, UCSUR is one of two research affiliates of the Pennsylvania State Data Center, the official source of demographic and economic data for the state.

The Western Pennsylvania Regional Data Center supports key community initiatives by making public information easier to find and use.

Environmental Policy Analysis

In the spring of 2017, UCSUR initiated the Environmental Policy Analysis program led by Michael Blackhurst. The Environmental Policy Analysis program integrates engineering and social science methods to address society's environmental challenges through open source publications and decision support resources. The Environmental Policy Program also serves to connect researchers at the University of Pittsburgh to sponsors and interests external to the University.

The Pittsburgh Regional Economic Model

Regional economic models describe the flow of monetary and labor resources within and across both regions and economic sectors. They are often used to assess the economic and labor impacts of policy alternatives, such as tax revisions, economic development, large-scale infrastructure investment, and many other similar scenarios.

UCSUR uses software published by Regional Economic Models Inc. (REMI) to develop and maintain a regional economic model for Pittsburgh. Pittsburgh's REMI model is supported by UCSUR in partnership with the Southwestern Pennsylvania Commission, which uses REMI for planning transportation infrastructure. UCSUR has over 25 years of experience applying the model to the Pittsburgh region. Previous applications of Pittsburgh's REMI model include economic, population, and labor forecasting and regional economic impact analysis.

Western Pennsylvania Regional Data Center

The Western Pennsylvania Regional Data Center supports key community initiatives by making public information easier to find and use. The Data Center provides a technological and legal infrastructure for data sharing to support a growing ecosystem of data providers and data users. The Data Center maintains Allegheny County and the City of Pittsburgh's open

data portal and provides a number of services to data publishers and users. The Data Center also hosts datasets from these and other public sector agencies, academic institutions, and nonprofit organizations. The Data Center is managed by the University of Pittsburgh's Center for Social and Urban Research and is a partnership of the University, Allegheny County, and the City of Pittsburgh. The Data Center is made possible through support provided by the Richard King Mellon Foundation, The Heinz Endowments, the University of Pittsburgh, Allegheny County, and the City of Pittsburgh.

The Data Center has been involved in the development of several information tools built using open data. Below is a listing:

- The Parking Dashboard displaying data about parking usage and revenue for every on-street meter zone and surface lot in the City of Pittsburgh. This tool was built in collaboration with the Pittsburgh Parking Authority.
- The Data Center worked in partnership with the Allegheny Land Trust to develop the Greenprint planning tool to support planning and land-use decisions. The mapping tool displays both environmental and property

data in Allegheny County.

- Burgh's Eye View displays a wide variety of information about the City of Pittsburgh, including service requests, street trees, code violations, reported crimes, and City of Pittsburgh assets. The tool was built by the City of Pittsburgh using data managed by the Data Center.
- Several tools for viewing and downloading property data across multiple datasets from Allegheny County and the City of Pittsburgh were also developed by the Data Center and available through its website.
- The Data Center also manages real-time data from the Allegheny County Health Department's network of continuous air quality monitors. This information is shared through Allegheny County's Air Quality Dashboard developed by County staff.
- The Engagement Map displays information about University of Pittsburgh Outreach Programs and was developed in collaboration with the University Office of Community & Governmental Relations.



Regional Indicators Project: PittsburghTODAY.org

PittsburghTODAY.org is an in-depth journalism and regional indicators program that compares Greater Pittsburgh with 14 other regions on hundreds of measures. The statistical indicators provide reliable and timely information that shows this region's strengths and weaknesses and how it compares with other regions. Additionally, PittsburghTODAY.org undertakes in-depth journalistic projects in subjects that are important to the region's future.

Pittsburgh Economic Quarterly

UCSUR publishes the Pittsburgh Economic Quarterly (PEQ) to support organizations and staff involved with economic development throughout the region. PEQ highlights important economic and demographic trends that impact the regional economy and the competitiveness of the regional economy. PEQ is an extension of the continuing work done at UCSUR. Each issue includes the latest data on regional employment and economic conditions. Feature articles cover a variety of issues relating to the regional economy and how it is changing, along with analyses of other economic and social factors that

directly impact the future of the region. Significant positive response to PEQ has resulted in substantial press coverage and has filled a major need in the region for ongoing study of current economic trends. Recent issues of PEQ addressed these key topics:

- Housing Price Trends in Pittsburgh Since the Great Recession
- Earnings Rebound in Southwestern Pennsylvania
- Trends in Educational Attainment within the Pittsburgh Region's Labor Force

Geographic Information System (GIS)

Geographic Information Systems visualize and analyze spatial trends in data. UCSUR staff have decades of leadership experience using GIS systems to manage and analyze spatial data, including executing original research and providing data publishing, technical assistance, online decision support, and data educational and training. Our staff have led GIS-driven projects across a diversity of domains, including

environmental policy, health care, land use and housing policy, and public health. Exemplary recent projects include the Western Pennsylvania Regional Data Center (WPRDC) and Southwestern Pennsylvania Community Profiles.

Pittsburgh Perspectives

The URA Program has expanded public outreach with a new online section of the UCSUR web page, which publishes short analyses of topics related to economic and demographic change in the Pittsburgh region.

University of Pittsburgh
Pittsburgh Economic Quarterly
University Center for Social and Urban Research (UCSUR)
Summer 2019

Inside This Issue
Pittsburgh's Opportunity Occupations 2
UCSUR Names Recipients of the 19th Annual Masters Awards 6
MHP Selects Bob Grubick of the Western Pennsylvania Regional Data Center as the Network Steward of the Year 7

Housing Price Trends in Pittsburgh since the Great Recession
By Christopher Green

After exhibiting rare stability in the aftermath of the most recent national recession, housing prices in the Pittsburgh region have tracked comparable appreciation rates across the nation in recent years. Here regional housing prices for the Pittsburgh region are compared to the recent trends across the 40 largest metropolitan areas in the United States. Data are compiled from the Expanded Data House Price Index (EHI) produced by the Federal Housing Financing Agency (FHFA).

Prior to the 2007–2009 recession, commonly referred to as the Great Recession, appreciation in Pittsburgh region housing prices typically trailed national averages.

Between 1998 and 2003, housing prices in the Pittsburgh Metropolitan Statistical Area (MSA) gained an average of 3.6% annually, significantly lower than the average annual gain of 6.7% for the nation's 40 largest MSAs.

The Great Recession was catalyzed in part by a crisis in subprime mortgage markets, which had concentrated impacts on the banking industry and institutions supporting national mortgage markets, resulting in significant declines in housing prices across the nation. On average, real estate prices in the 40 largest metropolitan areas in the United States declined by over

continued on page 6

FHFA Expanded-Data House Price Index, Annual Change, 1991–2018

Line graph showing Annual Change (%) from 1991 to 2018. The Y-axis ranges from -20% to 20%. The X-axis shows years from 1991 to 2018. Two lines are plotted: 'Average of 40 Largest MSAs' (blue line) and 'Pittsburgh MSA' (orange line). Both lines show a sharp decline around 2008, with the Pittsburgh MSA line reaching approximately -15% and the Average of 40 Largest MSAs line reaching approximately -10%.

Source: FHFA Expanded Data House Price Index

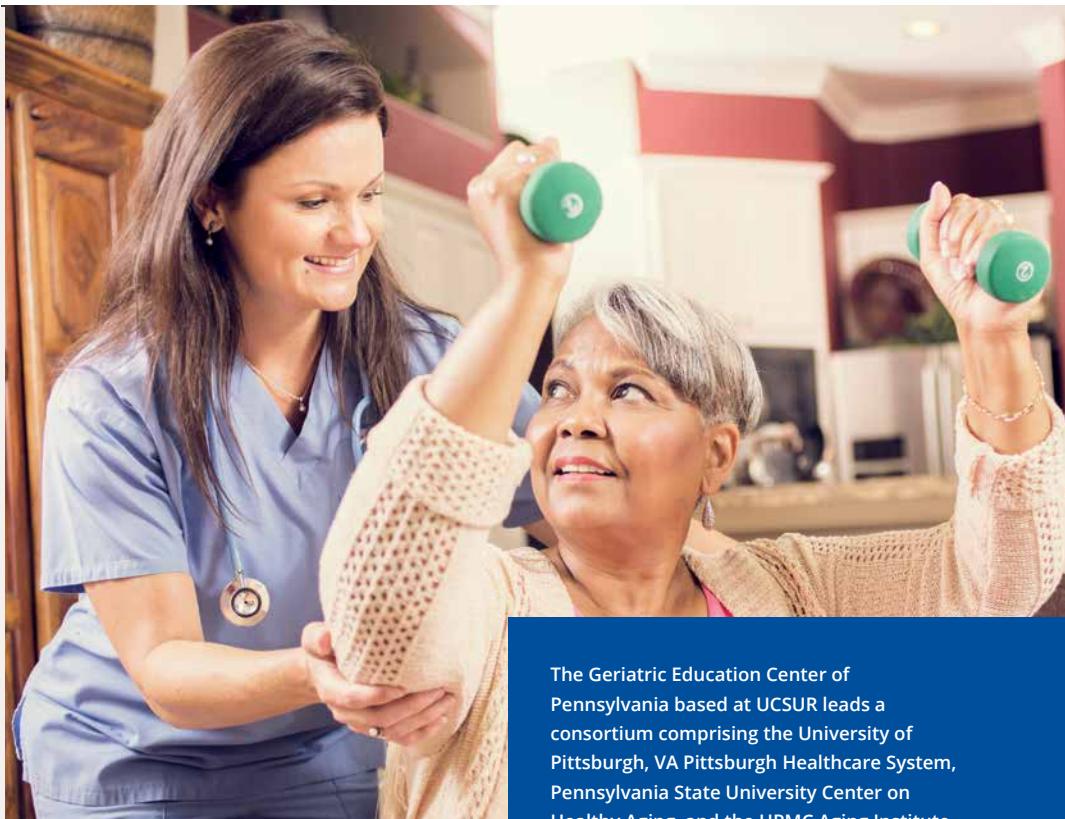
WHAT WE DO:

Center Resources

GERONTOLOGY SERVICES

The Gerontology Program at the University of Pittsburgh has been conducting federally-funded research on critical issues related to health, aging, and family caregiving for over 30 years. Much of what is known about living with different illnesses has resulted from medical and psychological research such as that conducted in our program. This program is recognized as one of the leading social gerontology research programs in the nation. Program faculty and staff play an active role in developing proposals for research focused on psychosocial, behavioral, cognitive, and physical aspects of aging. Our principal goals are to:

- Stimulate the development of externally funded research in six areas:
 1. physical and mental health of older adults
 2. use of technology to improve older adults' quality of life
 3. work and retirement
 4. aging and social institutions
 5. socialization and social support
 6. cultural differences and aging
- Operate as the information hub for interdisciplinary, aging-related research and training resources throughout the University
- Assist in the development of new gerontological training and service programs that serve the research and training missions of the University



The Geriatric Education Center of Pennsylvania based at UCSUR leads a consortium comprising the University of Pittsburgh, VA Pittsburgh Healthcare System, Pennsylvania State University Center on Healthy Aging, and the UPMC Aging Institute.

Graduate Certificate in Gerontology

This educational program is designed to serve individuals from diverse educational, employment, and professional backgrounds who are interested in acquiring basic knowledge about gerontology and geriatrics and specialized knowledge of aging and aging processes. Students may focus broadly on a course of study in a general multidisciplinary track offered both on-campus as well as through Pitt Online. They may also select specialty tracks focused on prevention and healthy aging, dentistry, gerontechnology, law, mental health, nursing, occupational therapy/rehabilitation, public health, and social work.

Whether to gain credentials and skills for a competitive advantage in the marketplace or to enhance understanding of aging to inform the delivery of services, programs, or products, students may solely enroll in this certificate program or they may pursue the certificate in conjunction with a degree program. Credits earned for the certificate may often be applied toward a degree program.

Information about this Graduate Certificate in Gerontology Program can be found at: agingcertificate.pitt.edu.

Center for Caregiving Research, Education, and Policy

In collaboration with the Health Policy Institute, the Gerontology Program of UCSUR launched the Center for Caregiving Research, Education, and Policy. The mission of the center is to enhance research on caregiving; train professionals and family caregivers to be as effective as possible; institute support programs integrating caregivers into existing health care services, long-term services and support systems; and inform public policy on the role of caregivers in state and national health care regulations.

For more than three decades, our multidisciplinary faculty and clinicians at the University of Pittsburgh and UPMC have been at the forefront of research documenting the impact

WHAT WE DO:

Center Resources

of caregiving on family caregivers and the persons they care for, developing intervention strategies to mitigate the negative effects and enhance the positive effects of caregiving, and formulating policy to support caregivers. The center consolidates and synergizes this expertise to accelerate the impact of our research on policy, health care systems, and the health of family members who are providing and receiving care.

Technology and Aging

A major research project led by the Gerontology Program focuses on how and why community-residing older adults, particularly those with limited access to personal computers and mobile devices, use multi-user health kiosks located in congregate settings to self-monitor and manage several aspects of their health. In addition to tracking user engagement with the assessment and intervention features of the kiosk, the project explores health services utilization during up to 18 months of study participation and promotes patient-provider communication regarding personal health and family caregiving concerns. This project is supported by the Agency for Healthcare Quality and Research and involves multidisciplinary collaboration among researchers in the health professions, social sciences, engineering, computer science, and informatics from several universities.



Geriatric Education

The Geriatric Education Center of Pennsylvania based at UCSUR leads a consortium comprising the University of Pittsburgh, VA Pittsburgh Healthcare System, Pennsylvania State University Center on Healthy Aging, and UPMC Aging Institute. Six initiatives provide training and resources to professional and paraprofessional health care providers, older adults, and family caregivers. Funded by the Health Resources and Services Administration, these initiatives address several regional needs and national directives regarding geriatric education:

- Improving the care of elderly veterans through education of primary care providers and family members
- Transforming clinical training for Alzheimer's disease and related disorders and

providing training to health and social services professionals in rural and underserved urban areas

- Advancing dementia-care competency and preparedness across disciplines in multiple primary care settings
- Improving mental health care for older adults in primary care settings
- Improving healthy lifestyles of older adults by training health and social service providers to implement preventive interventions for older adults in community settings
- Establishing a regional, community-based outreach and resource center

QUALITATIVE DATA ANALYSIS SERVICES

The Qualitative Data Analysis Program (QDAP) at UCSUR provides a resource to the University community in all aspects of qualitative data collection and analysis. Experienced QDAP staff can carry out or assist with all phases of a qualitative research project including study design, project management and coordination, data collection utilizing interviews, focus groups, and document or website analysis, audio and video transcription, data coding and analysis, and results reporting.

Data Collection and Management

QDAP staff have the expertise to collect and manage a range of qualitative data utilizing a variety of methods and sources. This includes conducting in-depth interviews, facilitating focus groups, and collecting qualitative data from both traditional and innovative sources such as document and textual material, videos, images and other visual material, and web sources such as websites, blogs, and emails. QDAP provides high-quality transcription of audio and video recordings for further analysis. QDAP staff can provide management services ranging from full project management to assistance in the management of data collection including recruitment, screening and scheduling of participants, depending on project needs. Using qualitative data analysis and management software, QDAP staff can also organize and manage qualitative data in preparation for analysis.

Value-Added Coding

Accurate and reliable coding is central to qualitative and mixed-methods analysis. QDAP offers a rigorous approach to analyzing a variety of qualitative materials. Experienced coders deliver the data you need in

a timely and expert manner from a wide variety of sources. Original material for analysis might include in-depth interviews, open-ended survey answers, field notes, transcripts from focus groups, web blogs, e-mails, website content, videos and images, results from database searches (such as LexisNexis™), congressional testimony, historical texts, and a host of other unstructured but digitized data sets. QDAP staff work with your research team to craft an analysis plan and codebook with a tailored methodology designed to code the material for key concepts and relationships. Multiple coders can quickly and reliably extract the data you need to reach valid inferences.

QDAP employs University of Pittsburgh students and UCSUR professional staff trained in data collection and in using qualitative analysis software. We maintain a 15-station transcription and qualitative data coding lab that utilizes Olympus transcription software; ATLAS.ti, a widely used qualitative data analysis software package that supports project management, enables multiple coders to collaborate on a single project, and generates output that facilitates the analysis process; NVivo, another

widely used qualitative data analysis software package; and Transana, a video coding software package; and a specialized, in-house program for quality control, which calculates inter-coder reliability statistics and simplifies adjudication of coder disagreement. In addition, we offer training seminars and one-on-one training sessions for faculty, staff, and students in using ATLAS.ti, NVivo, and Transana.

Services Provided

- Study design, management and coordination
- Interviewer training and management
- Participant recruitment
- Data collection including focus group facilitation, in-depth interviewing, cognitive interviewing and document analysis
- Transcription of audio and video recordings
- Data preparation, cleaning, and management
- Codebook development and testing
- Coding and coding adjudication
- Coder reliability and validity reporting
- Results analysis and expression
- Software training for qualitative data analysis software (ATLAS.ti, NVivo, Transana)



WHAT WE DO:

Center Resources

ACQUISITION AND MANAGEMENT OF SECONDARY DATA

UCSUR provides assistance for secondary data acquisition and management to the academic community and to the Pittsburgh region as a whole. As an affiliate of the Pennsylvania State Data Center, the official source of demographic and economic data for the state, UCSUR is a repository for electronic and printed Census information, including Census 2010 data. UCSUR also acquires and maintains a variety of government statistics, economic and labor market data, and other types of secondary information on a regular basis. This information is available to the academic community and to the general public.

The services UCSUR provides include:

- Assistance in acquiring secondary data stored at UCSUR to interested individuals and organizations
- Assistance in locating and acquiring a variety of other types of secondary information
- Expertise and consultation in the appropriate use and understanding of various secondary data sources
- Evaluation and interpretation of policy relevant secondary information data for government, business, labor, media and other organizations

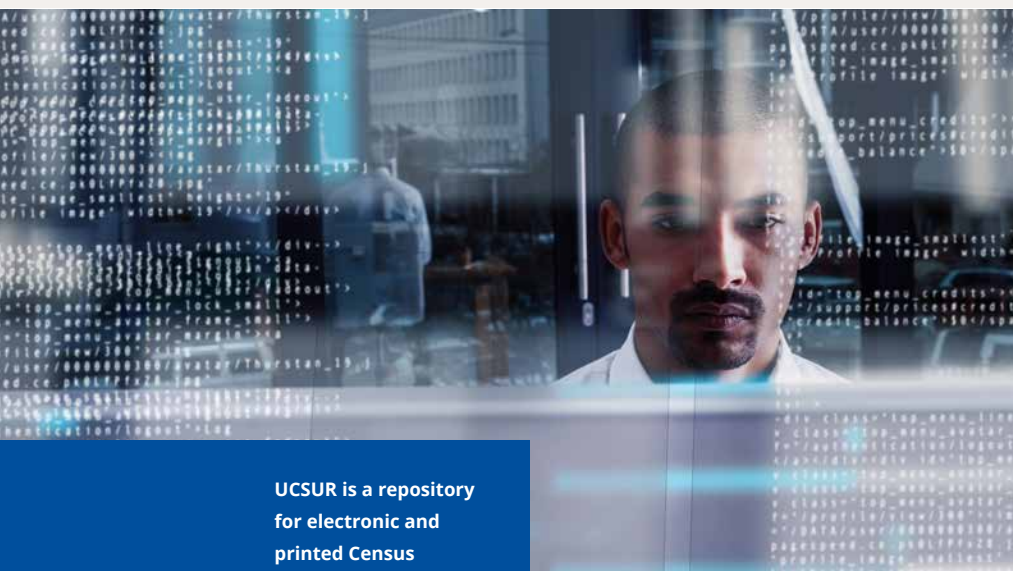
UCSUR also conducts demographic, economic and policy research and analysis and reports on secondary data and data trends relevant to the Pittsburgh region, both alone and in combination with various primary data sources. This research is reported through a number of venues, including research reports and newsletters, such as the Pittsburgh Economic Quarterly, and up-to-date neighborhood information on the UCSUR website (www.ucsur.pitt.edu).



INFORMATION TECHNOLOGY INFRASTRUCTURE

UCSUR Technology Services provides customized data management systems and services for our programs and clients. These systems and services focus on high-level security, data integrity, reliability, performance, and function. UCSUR partners with the University of Pittsburgh's Computing Services and Systems Development (CSSD) department and cloud-based services from Oracle, Google, and Amazon. These relationships enhance our capability to utilize modern computing technologies, deploy enterprise quality software, implement contemporary security protocols, and leverage protective network infrastructures. These vital partnerships enable UCSUR to provide staff and researchers the tools needed to meet critical and unique project requirements. Using this approach UCSUR can meet strict data integrity, security, and privacy demands of entities such as Institutional Review Boards (IRBs), funding agencies, and the federal government.

UCSUR Technology Services also supports data mining and data analytics software and methods that enable researchers to identify relationships and draw conclusions from collected data. This integrated, data-based analytical methodology is fundamental to research conducted and supported by UCSUR's interdisciplinary research team.



UCSUR is a repository for electronic and printed Census information, including Census 2010 data.



UCSUR has conducted evaluations on family support, home visiting, education, and child health programs among many others.

PROGRAM EVALUATION SERVICES

UCSUR can assist faculty at the University of Pittsburgh and community agencies with their program evaluation needs. We provide assistance in developing and designing evaluation plans, collecting and analyzing data, and writing evaluation reports. Depending on the focus of the project, these services can be provided by the Survey Research Program, Qualitative Data Analysis Program, Urban and Regional Analysis Program, or Gerontology Program.

UCSUR's interdisciplinary staff have evaluation experience in a wide range of content areas, including social service programs, behavioral and mental health services, public health programs, and educational services. UCSUR has conducted evaluations on family support, home visiting, after school and youth development, conflict resolution, developmental disabilities, maternal and child health, fatherhood, and parent education programs, among many others.

In addition, UCSUR has expertise in developing and implementing management information systems and needs assessments. UCSUR provides training and technical assistance to increase the capacity of staff to carry out evaluations, either independently or in collaboration with program evaluation specialists.

Specific evaluation services offered include:

- Development of evaluation designs, including process and outcome evaluations
- Assistance with program design, focusing on connecting program activities to expected outcomes (program logic models)
- Needs assessments
- Selection of appropriate outcomes and measurement methods
- Identification of assessment instruments
- Development of surveys for program evaluation
- Data analysis consultation and research design
- Referral to evaluation consultants with expertise in specific content areas

FACULTY DEVELOPMENT AWARDS

- 2019**
Jessica Hamilton, WPIC;
Marlo Perry, School of Social Work
- 2018**
Jamie Hanson, Psychology;
Junia Howell, Sociology;
Chelsea Pallatino, Obstetrics,
Gynecology, & Reproductive Sciences
- 2017**
Courtenay Dunn-Lewis, Health and
Physical Activity;
Aidan Wright, Psychology
- 2016**
Victoria Shineman, Political Science;
Alicia Sufrinko and Anthony Kontos,
Orthopaedic Surgery
- 2015**
Carissa Low, University of Pittsburgh
Cancer Institute;
Elizabeth Votruba-Drzal, Psychology
- 2014**
Anthony Fabio and Dara Mendez,
Epidemiology;
Lyn Robertson, Medicine
- 2013**
Brian Beaton and Rosta Farzan,
School of Information Sciences;
Kathryn Monahan, Psychiatry;
Ming-Te Wang, School of Education
- 2012**
Nicholas Castle, Graduate School of
Public Health
- 2011**
Jane Clougherty, Graduate School of
Public Health;
Fengyan Tang, School of Social Work
- 2010**
Shanti Gamper-Rabindran, Graduate
School of Public and International
Affairs;
Jennifer H. Lingler, School of Nursing;
Werner Troesken and Randall Walsh,
Economics;
Jennifer Nicoll Victor, Political Science
- 2009**
Irina Murtazashvili, Economics;
Brian A. Primack, Medicine and
Pediatrics
- 2008**
Peter J. Gianaros and J. Richard Jen-
nings, Psychiatry;
Keith Morgenlander, Medicine
- 2007**
Patricia Isabel Documet, Behavioral
and Community Health Sciences;
Jeffrey Shook and Michael Vaughn,
School of Social Work
- 2006**
Shanti Gamper-Rabindran and Aaron
Swoboda, Graduate School of
Public and International Affairs;
Larissa Myaskovsky, VA Pittsburgh
Healthcare System
- 2005**
Charlotte Brown, Center on Race and
Social Problems;
Bruce S. Ling, Institute for Doctor-
Patient Communication;
Eva Marie Shivers, School of
Education
- 2004**
Ellen Olshansky, School of Nursing;
Seung-Hyun Yoo, Graduate School of
Public Health;
Susan Zickmund, Medicine
- 2003**
Pamela Peele, Health Economics;
William Klein, Psychology; Daniel
Rosen, School of Social Work;
Lisa Brush, Sociology;
Audrey Murrell, Joseph M. Katz
Graduate School of Business;
Jeannette Trauth, Graduate School of
Public Health
- 2002**
Maureen Porter, Administrative and
Policy Studies;
Scott F. Kiesling, Linguistics
- 2001**
Miriam Hertz, Health Information
Management;
Paul E. Griffiths, History and
Philosophy

In memory of Steven D. Manners, who began working at the Center in 1974 and served as its Assistant Director from 1989 until his death in September 2000, UCSUR initiated a Faculty Development Awards program in recognition of Mr. Manners' contributions to the Center and the University community. UCSUR offers annually awards of up to \$10,000 each. Faculty may apply for awards in two categories: **(1) Research Development Grants** to support pilot research in the social, behavioral and policy sciences; and **(2) Infrastructure Development Awards** aimed at enhancing faculty capabilities to carry out interdisciplinary research in the social, behavioral and policy sciences.



CORE STAFF

Administration

Interim Director:
Scott Beach
Business Manager:
Greg Six
Administrators:
Anna Aivaliotis,
Donna M. King
Financial Administrator:
Abena Boadi-Agyemang
Administrative Assistant:
Carrie Rodzawicz

Administration - Technology Services

IT Director/Database
Administrator:
Robert Keene
Systems Administrator:
Eric Wolfe
Senior Research Programmer:
David Walker
Research Programmers:
Rhaven Nelson,
Steven Saylor

Survey Research Program

Director:
Scott Beach
Research Associate:
Donald Musa
Senior Research Specialist:
Janet Schlarb
Senior Fieldwork Supervisor:
Lynda Connelly
Fieldwork Supervisors:
Olivia Kirsch, Olivia Wilson
Fieldwork Supervisor/
Research Specialist:
Amber Barton
Research Specialist:
Christine Byerly
Research Specialists/
Interviewers:
Carolyn Baker, Victoria Casilli,
Jane Dirks, Paula Kubrick,
Patricia Lietz, Matthew Maielli,
Susan Stringfellow, Meg Streiff

Urban and Regional Analysis

Co-Program Director:
Michael Blackhurst
Co-Program Director:
Sabina Deitrick**
Regional Data Center
Director:
Robert Gradeck
Regional Economist:
Christopher Briem
GIS Database Analyst:
Ellen Kinnee
Research Specialist:
Elizabeth Monk
PittsburghTODAY
Director:
Douglas Heuck
PittsburghTODAY
Research
Coordinators:
Julia Fraser,
Bill O'Toole

Gerontology

Program Director:
Richard Schulz
Associate Program
Director:
Judith Matthews
Project Coordinators:
Jennifer Bissell,
Julie Klinger

Qualitative Data Analysis

Research Specialists:
David Halpern,
Kevan Schultz

Generations Together

Emeritus Director:
Sally Newman
Journal Editor:
Rafael Engel**

** Indicates participating faculty,
not UCSUR staff

FACULTY ASSOCIATES

Charles David Boucek
Anesthesiology
John P. Williams
Anesthesiology
Steven Albert
Behavioral and Community
Health Sciences
Jessica Griffin Burke
Behavioral and Community
Health Sciences
Mary Hawk
Behavioral and Community
Health Sciences
Richard Boyce
Biomedical Informatics
Gary M. Marsh
Biostatistics
Amber E. Johnson
Cardiology
Melissa Bilec
Civil and Environmental
Engineering
David Sanchez
Civil and Environmental
Engineering
Kenneth Sochats
College of General Studies
Caitlin Bruce
Communication
Catherine V. Palmer
Communication Science and
Disorders
Alexandros Labrinidis
Computer Science
Rami Melhem
Computer Science
Daniel Mosse
Computer Science
Taieb Znati
Computer Science
Jeremy Kahn
Critical Care Medicine
Douglas White
Critical Care Medicine
James Guggenheimer
Dental Medicine
Mary Marazita
Dental Medicine
Robert Weyant
Dental Medicine
Patricia Beeson
Economics
Randall Walsh
Economics
Linda DeAngelo
Education
Carl I. Fertman
Education
Michael Gunzenhauser
Education
Maureen Porter
Education
Vince N. Mosesso, Jr.
Emergency Medicine
Brian Suffoletto
Emergency Medicine
Steven H. Belle
Epidemiology
Jane A. Cauley
Epidemiology
Andrea Kriska
Epidemiology
William B. Kory
Geography
Rollin Wright
Geriatric Medicine
Sabina Deitrick
Graduate School of Public and
International Affairs
David Y. Miller
Graduate School of Public and
International Affairs
Marcela Gonzalez Rivas
Graduate School of Public and
International Affairs
Jennifer Brach
Health and Rehabilitation
Sciences
Anthony Delitto
Health and Rehabilitation
Sciences
Nicholas Castle
Health Policy and Management
Howard B. Degenholtz
Health Policy and Management
Everette James III
Health Policy and Management
Laurence A. Glasco
History
Lisa S. Parker
Human Genetics
Mary Besterfield-Sacre
Industrial Engineering
Kathleen McTigue
Internal Medicine
Lawrence Feick
Katz Graduate School
of Business
Carrie R. Leana
Katz Graduate School
of Business
John E. Prescott
Katz Graduate School of
Business

FACULTY ASSOCIATES

Ronald A. Brand
Law

Mary Crossley
Law

Vivian Curran
Law

Alan Meisel
Law

Richard Correnti
Learning Research and
Development Center

Mary Kay Stein
Learning Research and
Development Center

James M. Roberts
Magee-Women's Research
Institute

Derek C. Angus
Medicine

Robert M. Arnold
Medicine

Sonya Borrero
Medicine

Michael Fine
Medicine

Manisha Jhamb
Medicine

Wishwa Kapoor
Medicine

John Kellum, Jr.
Medicine

Katie Nason
Medicine

Anne B. Newman
Medicine

P. Sudhakar Reddy
Medicine

Linda Robertson
Medicine

Eric Rodriguez
Medicine

Robert E. Schoen
Medicine

Galen Switzer
Medicine

Debra K. Weiner
Medicine

Rollin Wright
Medicine

Edward Stricker
Neuroscience

Catherine Bender
Nursing

Lora E. Burke
Nursing

Denise Charron-Prochownik
Nursing

Eileen Chasens
Nursing

Rose E. Constantino
Nursing

Jill Radtke Demirci
Nursing

Annette DeVito Dabbs
Nursing

Heidi Donovan
Nursing

Willa M. Doswell
Nursing

Jacqueline Dunbar-Jacob
Nursing

Sandra Engberg
Nursing

Judith A. Erlen
Nursing

Jennifer Hagerty Lingler
Nursing

Faith Luyster
Nursing

Ann M. Mitchell
Nursing

Lorraine Novosel
Nursing

Mijung Park
Nursing

Margaret Rosenzweig
Nursing

Elizabeth A. Schlenk
Nursing

Jennifer Seaman
Nursing

Susan Sereika
Nursing

Paula Sherwood
Nursing

Pamela Toto
Occupational Therapy

Joseph McCarthy
Office of the Provost

Parmjeet Randhawa
Pathology

Raymond Pitetti
Pediatrics

Dianna Ploof
Pediatrics

Kristin Ray
Pediatrics

Selma F. Witchel
Pediatrics

Pouran Famili
Periodontics

Pam Smithburger
Pharmacy

Victorial Hornyak
Physical Therapy

James J. Irrgang
Physical Therapy

Andrew Lynch
Physical Therapy

Jessie VanSwearingen
Physical Therapy

Barry Ames
Political Science

Boris Birmaher
Psychiatry

Dana Bovbjerg
Psychiatry

David Brent
Psychiatry

Charlotte Brown
Psychiatry

Daniel Buysse
Psychiatry

Tammy Chung
Psychiatry

Duncan Clark
Psychiatry

Mary Amanda Dew
Psychiatry

Andrea Dimartini
Psychiatry

Jordan Karp
Psychiatry

Michael Marsha
Psychiatry I

Karen A. Matthews
Psychiatry

Richard Morycz
Psychiatry

Edward P. Mulvey
Psychiatry

Vishwajit Nimgaonkar
Psychiatry

Paul Pilkonis
Psychiatry

Neal Ryan
Psychiatry

Lalith Kumar Solai
Psychiatry

Sarah Stahl
Psychiatry

Ellen Whyte
Psychiatry

Kirk Erickson
Psychology

Linda Ewing
Psychology

Peter Gianaros
Psychology

Thomas Kamarck
Psychology

Kathryn Roecklein
Psychology

Daniel Shaw
Psychology

Steven E. Stern
Psychology-Johnstown

Rory Cooper
Rehabilitation Science and
Technology

Dan Ding
Rehabilitation Science and
Technology

Mary Goldberg
Rehabilitation Science and
Technology

Ralph Bangs
Social Work

Rafael J. Engel
Social Work

Catherine Greeno
Social Work

Elizabeth Mulvaney
Social Work

Helen Petracchi
Social Work

Mary Rauktis
Social Work

Hide Yamatani
Social Work

Kathleen M. Blee
Sociology

Lisa D. Brush
Sociology

Waverly Duck
Sociology

Vijai P. Singh
Sociology

Daniel Hall
Surgery

James D. Luketich
Surgery

Aaron Brenner
University Library System

PROJECTS*

Biobehavioral Studies of Cardiovascular Disease

**PIs: Scott Beach, SRP, UCSUR
Janet Schlarb, SRP, UCSUR
Peter Gianaros, Psychology**

Funder: National Institutes of Health
Period: 05/18-06/23

Telephone recruitment of participants for the NOAH (N=389) and eBACH (N=150) studies designed to advance mechanistic and translational science on the neurobiology of cardiovascular disease risk in midlife.

Does a New Supermarket Improve Dietary Behaviors of Low-Income African Americans?

**PIs: Scott Beach, SRP, UCSUR
Tamara Dubowitz, RAND**

Funder: National Institutes of Health
Period: 05/10-12/20

Interviewer training, programming for data collection, and data management in a study of the impact of a new grocery store on dietary behavior in 1,600 residents of low-income neighborhoods.

Does Mindfulness Meditation Training Improve Social Relationship Functioning?

**PIs: Scott Beach, SRP, UCSUR
Janet Schlarb, SRP, UCSUR
David Creswell, Carnegie Mellon University**

Funder: National Institutes of Health
Period: 09/15-08/20

Telephone recruitment of N=189 older adults for participation in a mindfulness meditation training program.

Esophageal Cancer Patient Survey

**PIs: Scott Beach, SRP, UCSUR
Janet Schlarb, SRP, UCSUR
Katie Nason, Medicine**

Funder: National Institutes of Health
Period: ongoing

Telephone interviews of 200+ patients diagnosed with or at risk for esophageal cancer exploring risk factors and patient interactions with the healthcare system.



Experimental Study of Stress and DNA Damage in Humans: Mediators and Moderators

**PIs: Scott Beach, SRP, UCSUR
Janet Schlarb, SRP, UCSUR
Dana Bovbjerg, Psychiatry**

Funder: National Institutes of Health
Period: 01/17-12/21

Telephone recruitment of 160 persons to participate in an experimental study looking at the effects of brief stresses on DNA in blood samples.

Factors Contributing to Oral Health Disparities in Appalachia

**PIs: Scott Beach, SRP, UCSUR
Mary Marazita, Dental Medicine**

Funder: National Institutes of Health
Period: 04/11-06/21

Telephone interviews of 1,000 new mothers—500 in Pittsburgh and 500 in West Virginia—to explore factors related to childhood oral health disparities.

Identifying Predictors of Poor Health-Related Quality of Life among Pediatric Hematopoietic Stem Cell Donors

**PIs: Scott Beach, SRP, UCSUR
Janet Schlarb, SRP, UCSUR
Galen Switzer, Medicine**

Funder: National Institutes of Health
Period: 01/18-12/21

Telephone interviews with several hundred pediatric stem cell donors and their family members to gather information that will be used to design interventions to improve quality-of-life in donors and their families.

Improving the Availability of Younger Unrelated Hematopoietic Stem Cell Donors

**PIs: Scott Beach, SRP, UCSUR
Janet Schlarb, SRP, UCSUR
Galen Switzer, Medicine**

Funder: National Institutes of Health
Period: 04/16-04/21

Web survey of several hundred younger potential unrelated hematopoietic stem cell donors (aged 18–30) with the ultimate goal of improving availability of this younger donor group.

Increasing Equity in Transplant Evaluation and Living Donor Kidney Transplantation

**PIs: Scott Beach, SRP, UCSUR
Larissa Myascovsky, University of New Mexico**

Funder: National Institutes of Health
Period: 09/14-07/19

Telephone interviews of N=1300 kidney transplant patients to collect information that will help pave the way for transplant centers to implement fast-track systems, improve quality of care, and address racial disparities in rates of LDKT.

PROJECTS*

Jefferson Area Community Data and Technical Assistance

**PIs: Scott Beach, SRP, UCSUR
Janet Schlarb, SRP, UCSUR
Mary Phan-Gruber, Jefferson Regional Foundation**

Funder: Jefferson Regional Foundation
Period: 01/19-12/20

This project leverages UCSUR's expertise in qualitative analysis, survey design, focus groups, database tools and training to provide analysis, guidance and technical assistance to the Foundation and Jefferson Community Collaborative. UCSUR is filling an essential role in the production of community data, evaluations and in building local capacity in the application of data for community impact through various projects.

Melanopsin Photosensitivity and Psychopathology

**PIs: Scott Beach, SRP, UCSUR
Kathryn Roecklein, Psychology**

Funder: National Institutes of Health
Period: 09/14-05/19

Telephone recruitment of N=130 persons with seasonal affective disorder.

On the Move: Optimizing Participation in Group Exercise

**PIs: Scott Beach, SRP, UCSUR
Robert Keene, SRP, UCSUR
Jennifer Brach, Health and Rehabilitation Sciences**

Funder: Patient-Centered Outcomes Research Institute
Period: 10/14-present

SRP is using Interactive Voice Response (IVR) among group exercise participants to track falls, activity, and hospital visits monthly over the course of one year.

Pittsburgh Caregiver Survey

**PIs: Scott Beach, SRP, UCSUR
Richard Schulz, Gerontology, UCSUR
Janet Schlarb, SRP, UCSUR
Everette James, Health Policy Institute**

Funders: Pittsburgh Foundation; Stern Center for Evidence Based Policy
Period: 08/16-12/18

Telephone interviews with 1000 local informal caregivers and 200 care recipients to assess the state of caregiving in the region.

Regional Quality of Life 2018

**PIs: Scott Beach, SRP, UCSUR
Douglas Heuck, URA, UCSUR**

Funders: UCSUR, PittsburghTODAY
Period: 04/18-12/18

Web survey of N=1900 local residents assessing their views regarding quality of life in Allegheny County. This is an update to a similar survey conducted in 2011.

Social Integration, Daily Social Interaction, and Health Risk Pathways in Midlife

**PIs: Scott Beach, SRP, UCSUR
Janet Schlarb, SRP, UCSUR
Thomas Kamarck, Psychology**

Funder: National Institutes of Health
Period: 04/14-03/20

Telephone recruitment of 400 healthy adults to participate in a study about social interactions, stress, and health.

Targeted Interventions to Prevent Chronic Lower Back Pain (TARGET Trial)

**PIs: Scott Beach, SRP, UCSUR
Janet Schlarb, SRP, UCSUR
Anthony Delitto, School of Health and Rehabilitation Sciences**

Funder: Patient-Centered Outcomes Research Institute
Period: 07/15-09/20

Surveys (web and phone) of 12,000 patients (across 5 sites) at 6 and 12 months after an initial doctor's visit for lower back pain.

Technology Assisted Collaborative Care Intervention

**PIs: Scott Beach, SRP, UCSUR
Janet Schlarb, SRP, UCSUR
Manisha Jhamb, Medicine**

Funder: National Institutes of Health
Period: 07/17-06/22

Telephone and IVR interviews with 150 hemodialysis patients in Pittsburgh and New Mexico to examine the effect of a 12-week stepped care intervention on changes in depression, pain, fatigue, and health-related quality of life.

Undergraduate Student Satisfaction and Retention Study

**PIs: Scott Beach, SRP, UCSUR
Donald Musa, SRP, UCSUR
Joseph McCarthy, Office of the Provost**

Funder: Office of the Provost
Period: 09/97-present

Telephone interviews and web-based surveys of University of Pittsburgh undergraduate students (n=1800+ per year) and withdrawing students (n=600+ per year) to determine factors related to student satisfaction and retention.



Understanding Factors Influencing Financial Exploitation among Diverse Samples of Older Adults

**PIs: Scott Beach, SRP, UCSUR
Richard Schulz, Gerontology,
UCSUR**

**Sara Czaja, Weill Cornell Medical
College**

**David Loewenstein, University of
Miami**

Funder: National Institutes of Health
Period: 04/17-03/22

The aims of this project are to: examine the impact of financial scam susceptibility on incidence of financial exploitation (FE); examine the impact of socio-demographic factors and social integration/isolation on scam susceptibility and FE; examine the impact of general cognitive abilities and financial skills/advice and support on scam susceptibility and FE, and as mediators of relationships between socio-demographic factors, social integration/isolation, scam susceptibility and FE; and examine the impact of psychosocial factors on scam susceptibility and FE.

Wheelchair Registry

**PIs: Scott Beach, SRP, UCSUR
Robert Keene, SRP, UCSUR**

**Rory Cooper, Human Engineering
Research Laboratories**

Funder: Human Engineering Research
Laboratories
Period: 01/14-present

Development of a system to help the Human Engineering Research Laboratories at the University of Pittsburgh efficiently and securely register and track participants in a wheelchair registry for research participation. The system involves a custom database working in conjunction with an online survey instrument for data collection and maintenance.



Developing Leaducated: A Web-based, Citizen Science Approach to Detecting Lead Water Lines

PI: Michael Blackhurst, URA, UCSUR

Funder: Heinz Endowments

Period: 01/18-12/18

This project develops, tests, and deploys a smart-phone app that allows users to determine the material of their drinking water service line.

Predicting Lead Water Service Lines in the Pittsburgh Water and Sewer Authority Service Area

PI: Michael Blackhurst, URA, UCSUR

Funder: Pittsburgh Water and Sewer
Authority

Period: 04/19-12/19

The Pittsburgh Water and Sewer Authority (PWSA) is currently required to replace lead water service lines to comply with state and federal drinking water regulations. The goal of this project is to develop a predictive model of service line materials for each PWSA customer and apply that model to improve PWSA programming, including lead service line detection, replacements, and inventory estimates

Older Workers in the Southwestern Pennsylvania Workforce

PI: Christopher Briem, URA, UCSUR

Funder: Southwestern Pennsylvania
Partnership for Aging

Period: 06/19-10/19

Compilation of recent trends and future projections of the role of older workers in the labor force in the 10-county area of Southwestern Pennsylvania.

A Comprehensive Assessment of Pennsylvania Military Installations and Impacts

PI: Sabina Deitrick, URA, UCSUR

Funder: Pennsylvania Military
Community Enhancement
Commission

Period: 01/17-07/18

Economic impact analysis of 12 individual military installations and collective impact in Pennsylvania, and a Strengths, Weakness, Opportunity, and Threats analysis of each installation.

Evaluation of Rent Reform Policy and Family Self-Sufficiency Program and Alternative Small Area Fair Market Rent Program

**PIs: Sabina Deitrick, URA, UCSUR
Michael Blackhurst, URA, UCSUR**

Funder: Housing Authority of the City
of Pittsburgh

Period: 08/17-08/18

Evaluations of participation in the Family Self-Sufficiency program related to increased minimum monthly rent and rental income revenue; analysis of Small Area Fair Market Rent program through creation of a rental price-gradient map of the City of Pittsburgh and rental price map.

PROJECTS*

Western Pennsylvania Regional Data Center

PI: Robert Gradeck, URA, UCSUR

Funders: R.K. Mellon Foundation; University of Pittsburgh
Period: ongoing

The Data Center supports key community initiatives by making public information easier to find and use. The Data Center is managed by UCSUR, and is in partnership with Allegheny County and the City of Pittsburgh.

Co-occurring Intimate Partner Violence and Substance Use: Understanding Barriers to Collocated Integrated Services

PIs: David Halpern, QDAP, UCSUR Chelsea Pallatino, School of Medicine

Funder: Steven D. Manners Faculty Development Award
Period: 05/19-07/19

Transcription of interviews with pregnant and postpartum women with co-occurring intimate partner violence (IPV) and opioid use disorder (OUD), and stakeholders interfacing with women with co-occurring OUD and IPV.

Novel Approach to Enhance Ostomy Care in Patients with Bladder and Colorectal Cancer

PIs: David Halpern, QDAP, UCSUR Holden Kata, Icahn School of Medicine at Mount Sinai Nihal Mohamed, Icahn School of Medicine at Mount Sinai

Funder: National Institutes of Health
Period: 08/18

Transcription of phone interviews with bladder and colorectal cancer patients with new ostomies regarding a Web-based ostomy education program.

Pain Management Strategies for Knee Osteoarthritis: Use, Intention to Use, and Differences in Pain and Arthritis Pain Self-Efficacy

PIs: David Halpern, QDAP, UCSUR Xiaojun Shi, School of Nursing

Funder: Mrs. Margaret Wilkes & Mr. James Wilkes 2018 Scholarship
Period: 05/19-present

Transcription of interviews with older adults with knee OA and hypertension about their pain management strategies, and the effect of new pain management strategies on changes in pain and arthritis pain self-efficacy.

Resident Leadership and Local Capacity Building: Volunteerism in Disadvantaged Communities

PIs: David Halpern, QDAP, UCSUR Emily Zimmerman, Virginia Commonwealth University

Funder: Corporation for National and Community Service
Period: 01/19-07/19

Transcription of interviews with neighborhood-based and regional volunteers in economically disadvantaged communities, exploring their synergy, collaboration, and best practices.

Seven Smaller Short-Term Transcription and Consulting Projects with a Variety of Investigators and Funders

PIs: David Halpern, QDAP, UCSUR Kevan Schultz, QDAP, UCSUR

Funders: Multiple
Period: 07/18-06/19

Seven smaller, short-term transcription and consulting projects with a variety of investigators and funders.

The Symptom Experience, Management and Outcomes According to Race and Social Determinants of Health (SEMOARS) During Breast Cancer Chemotherapy

PIs: David Halpern, QDAP, UCSUR Margaret Rosenzweig, School of Nursing

Funder: National Institute on Minority Health and Health Disparities
Period: 06/19-present

Transcription of interviews exploring the breast cancer symptom experience among black and white women.

Transcription Projects for University of Pittsburgh School of Nursing

PIs: David Halpern, QDAP, UCSUR Jill Radtke Demirci, School of Nursing

Melissa Glasser, School of Nursing
Funders: National Institutes of Health; Departmental Funds
Period: 06/17-03/19

Transcription for three projects addressing various aspects of mothers' recent breastfeeding experiences.

Regional Indicators Project: PittsburghToday.org

PI: Douglas Heuck, URA, UCSUR
Funders: Hillman Foundation; Anonymous; Richard King Mellon Foundation; Claude Worthington Benedum Foundation
Period: ongoing

The Regional Indicators Project: PittsburghToday.org is an in-depth journalism and regional indicators program that compares Greater Pittsburgh with 14 other regions on hundreds of measures. Since its inception, hundreds of reports have been published on key regional quality of life issues.

Self-management via Health Kiosk by Community-residing Older Adults

PIs: Judith Matthews, Gerontology, UCSUR

**Scott Beach, SRP, UCSUR
Daniel Buysse, Psychiatry
Karen Courtney, University of Victoria**

**Sandra Engberg, Nursing
Jennifer Hagerty Lingler, Nursing
Kathleen McTigue, Internal Medicine**

Richard Schulz, Gerontology, UCSUR

Marjorie Skubic, University of Missouri

Asim Smailagic, Carnegie Mellon University

Jessie Van Swearingen, Physical Therapy

Funder: Agency for Healthcare Research and Quality
Period: 09/14-09/20

This project will study older adults' views, motivations, and patterns of use of an adaptive, community-based, multi-user health kiosk over 18 months of study participation. The goal is to understand how and why older adults use a health kiosk to live a healthier lifestyle and monitor and manage selected chronic conditions.

Civic Switchboard

**PIs: Elizabeth Monk, URA, UCSUR
Aaron Brenner, University Library System**

Funder: Institute of Museum and Library Services
Period: 10/17-12/19

Civic Switchboard aims to develop the capacity of academic and public libraries in civic data ecosystems. This project encourages partnerships between libraries and local data intermediaries, which will better serve data users, further democratize data, and support equitable access to information. The project will create a toolkit for libraries interested in expanding (or beginning) their role around civic information. Civic Switchboard is a partnership of UCSUR, the University Library System at the University of Pittsburgh, and the Carnegie Library of Pittsburgh.

Comprehensive Primary Care Plus

**PIs: Donald Musa, SRP, UCSUR
David Halpern, QDAP, UCSUR
Kevan Schultz, QDAP, UCSUR
Deborah Peikes, Mathematica Policy Research, Inc.**

Funder: Centers for Medicare & Medicaid Services
Period: 03/15-present

Transcription of interviews with multiple stakeholders regarding the implementation of CMS's CPC Classic and CPC+ programs.

From Periphery to Center: Transitioning Public Art Practices in Contemporary Mexico

**PIs: Donald Musa, SRP, UCSUR
Kevan Schultz, QDAP, UCSUR
Caitlin Bruce, Communication**

Funder: UCIS - Hewlett International Grant
Period: 07/15-08/19

Spanish transcription of interviews that explore how a city-sponsored graffiti program in León Guanajuato, Mexico impacts graffiti artists' civic status.

2019 Graduate Research Practicum (GRP) Portfolio Analysis

**PIs: Kevan Schultz, QDAP, UCSUR
Marzia Cozzolino, Katz Graduate School of Business**

Funder: Katz International Business Center
Period: 05/19-present

Qualitative methods consultation and coding of Katz Graduate School of Business students' journals based on their Global Research Practicums.



Caregiver Perception of High-Quality Care in the Medical Home for Children with Medical Complexity

**PIs: Kevan Schultz, QDAP, UCSUR
Justin Yu, General Internal Medicine**

Funder: HRSA Career Development Award
Period: 06/19-present

Transcription and coding of interviews with the parental caregivers of Children with Medical Complexity to identify the features of a CMC medical home that provide a high-quality experience.

From Barely Making It To...? Effects of Raising Wages Among Low-Wage Workers

**PIs: Kevan Schultz, QDAP, UCSUR
Ray Engel, School of Social Work**

Funder: National Institute of Mental Health
Period: 02/17-07/19

Transcription of interviews with low-wage earners at Allegheny Health Network that explore ways in which unionization and increased wages have made a difference.

Natural Product-Drug Interaction User Studies

**PIs: Kevan Schultz, QDAP, UCSUR
Rich Boyce, Biomedical Informatics**

Funder: National Institutes of Health
Period: 11/17-12/18

Transcription of interviews with users of a web site that will provide evidence-based information regarding purported pharmacokinetic natural product-drug interactions (PK-NPDI).

Sexual Function in Older Women: Identifying Treatment and Outcome Preferences

**PIs: Kevan Schultz, QDAP, UCSUR
Holly Thomas, UPMC, Division of General Internal Medicine**

Funder: National Institute on Aging
Period: 12/17-09/18

Transcription of interviews and focus groups with women 50 and older to understand their sexual function, and what sort of treatments they would prefer for sexual problems.

PROJECTS*

The Intersection of LGBT Identity and Bipolar Disorder in Adolescence: Understanding Psychological Experiences, Treatment Course, and Risk for Suicide

**PIs: Kevan Schultz, QDAP, UCSUR
Sophia Choukas-Bradley,
Psychology**

Funder: National Institutes of Health
Period: 02/19-09/19

Transcription and coding of interviews with LGBT youth with bipolar disorder to examine the intersection of bipolar symptomatology, suicidal events, and LGBT identity and stressors, in the context of an ongoing treatment outcome study.

The Role of Higher Education Programs to the Future of the Wastewater Industry

**PIs: Kevan Schultz, QDAP, UCSUR
Kimberly Wahl, Baker College**

Funder: Self-funded
Period: 05/18-10/18

Transcription and coding of interviews with undergraduate students to examine the role of higher education programs in the future of the wastewater industry.

A Non-Pharmacological Intervention for Patients with Alzheimer's Disease And Family Caregivers

**PIs: Richard Schulz, Gerontology,
UCSUR**

Sara Czaja, Weill Cornell Medical College

Funder: National Institute on Aging
Period: 09/16-04/21

The study will develop and test the efficacy and feasibility of a dyadic-based intervention program (DT), delivered through state-of-the-art computer tablet technology. A novel feature of the investigation is its focus on both the caregiver and the recipient of care (person with AD) and the integration of an evidenced-based caregiver intervention and evidenced-based cognitive/functional training for the care recipient.

A Randomized Pilot Study of Behavioral Self-monitoring to Promote Mental Health Among Spousally Bereaved Older Adults

**Co-Mentor: Richard Schulz,
Gerontology, UCSUR**

PI: Sarah Stahl, Psychiatry

Funder: National Institutes of Health
Period: 02/15-01/19

The purpose of this research is to gather evidence for the feasibility of a behavioral intervention to prevent the onset or delay the progression of depression, anxiety, and/or complicated grief disorder(s) in adults who experience late-life spousal bereavement.

A Tailored Technology Intervention for Diverse Family Caregivers of AD Patients

**PIs: Richard Schulz, Gerontology,
UCSUR**

**Judith Matthews, Gerontology,
UCSUR**

Sara Czaja, Weill Cornell Medical College

Funder: National Institute of Nursing Research

Period: 04/13-03/19

This investigation focuses on gathering systematic data on the acceptability and efficacy of a unique technology-based, culturally-tailored psycho-social intervention program that targets ethnically/culturally diverse family caregivers of patients with Alzheimer's Disease.

Geriatrics Workforce Enhancement Program

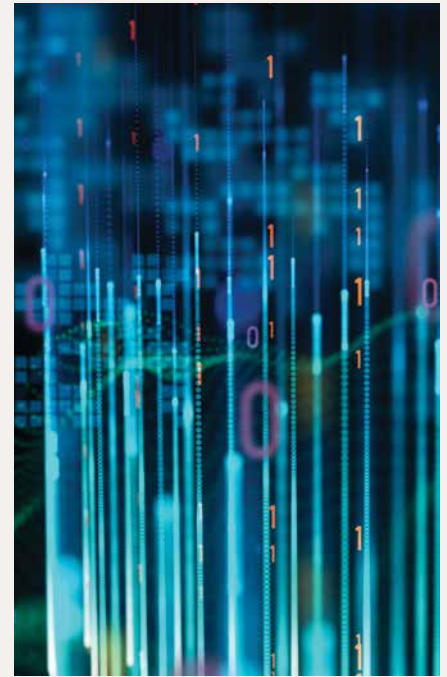
**PIs: Richard Schulz, Gerontology,
UCSUR**

**Judith Matthews, Gerontology,
UCSUR**

Funder: Health Resources and Services Administration

Period: 07/15-06/20

The Geriatrics Workforce Enhancement Program (GWEP) is a consortium of the University of Pittsburgh, the VA Pittsburgh Healthcare System, Penn State University, and UPMC, with Pitt as the lead institution. Through this collaboration we are able to provide interprofessional training and access to resources for older adults and their families throughout HHS Region III.



Return of Amyloid Imaging Research Results in MCI

**PIs: Richard Schulz, Gerontology,
UCSUR**

Jennifer Hagerty Lingler, Nursing

Funder: National Institute on Aging
Period: 06/14-05/19

The purpose of this study is to use a series of qualitative interviews and content analysis to identify the information and support needs of MCI care dyads who are offered amyloid imaging research results.

Competiveness Research

**PI: Vijai Singh, Office of the
Chancellor**

Funders: Heinz Endowments,
Consolidated Natural Gas
Period: ongoing

Projects include analysis of factors which promote regional competitiveness of the biotech industry in Pittsburgh. Partner in a research network with Transatlantic Comparison of Continental Innovation Models. Project Director: Professor Ulrich Hilpert, University of Jena, Germany.

PUBLICATIONS 2018-2019

JOURNALS

Beach, S.R., Kinnee, E., & Schulz, R. (in press). Caregiving and place: Combining geographic information system (GIS) and survey methods to examine neighborhood context and caregiver outcomes. *Innovation in Aging*.

Beach, S.R., Schulz, S., Friedman, E.M., Rodakowski, J., Martsof, G., & James, E.A. (in press). Adverse consequences of unmet needs for care in high-need/high-cost older adults. *Journal of Gerontology: Social Sciences*.

Beach, S.R., Schulz, R., & Sneed, R. (2018). Associations between social support, social networks and financial exploitation in older adults. *Journal of Applied Gerontology*, 37(8), 990-1011.

Blackhurst, M., Briem, C., & Deitrick, S. (in press). Contrasting different geographies in fair market rents: Implications for the housing choice voucher program in Pittsburgh, PA. *Cityscape*.

Czaja, S.J., Lee, C.C., Perdomo, D., Loewenstein, D., Bravo, M., Moxley, J.H., & Schulz, R. (2018). Community REACH: An implementation of an evidenced-based caregiver program. *The Gerontologist*, 58(2), e130-e137.

Deitrick, S.E. (in press). Review of the political economy of capital cities, by H. Mayer, F. Sager, D. Kaufmann, & M. Warland, *Journal of Urban Affairs*.

Engel, R., Thang, L.L., & Rodzawicz, C. (Eds.). (2018). *Journal of Intergenerational Relationships* (Vol. 16). Philadelphia, PA: Taylor & Francis.

Engel, R., Thang, L.L., & Rodzawicz, C. (Eds.). (2019). *Journal of Intergenerational Relationships* (Vol. 17). Philadelphia, PA: Taylor & Francis.



Ezaz, G., Leffler, D.A., Beach, S., Schoen, R.E., Crockett, S.D., Gourevitch, R.A., Rose, S., Morris, M., Carrell, D.S., Greer, J.B., & Mehrotra, A. (2019). Association between endoscopist personality and rate of adenoma detection. *Clinical Gastroenterology and Hepatology*, 17(8), 1571-1579.e7.

Fields, B., Rodakowski, J., H James, A.E., & Beach, S. (2018). Caregiver health literacy predicting healthcare communication and system navigation difficulty. *Families, Systems, & Health*, 36(4), 482-492.

Fields, B., Turner, R.L., Naidu, M., Schulz, R., James, E., & Rodakowski, J. (in press). Assessments for caregivers of hospitalized older adults. *Clinical Nursing Research*.

Friedman, E.M., Rodakowski J., Schulz, R., Beach, S.R., Martsof, G., & James, A.E. (in press). Do family caregivers offset healthcare costs for older adults?: A mapping review on the costs of care for older adults with versus without caregivers. *The Gerontologist*.

Heckhausen, J., Wrosch, C., & Schulz, R. (2019). Agency and motivation in adulthood and old age. *Annual Review of Psychology*, 70, 191-217.

Jimenez, D.E., Schulz, R., Perdomo, D., Lee, C.C., & Czaja, S. (2019). Implementation of a psycho-social intervention program for working caregivers. *Journal of Applied Gerontology*, 38(9), 1206-1227.

Kariuki, J.K., Gibbs, B.B., Davis, K.K., Mecca, L.P., Hayman, L.L., & Burke, L.E. (2019). Recommendations for a culturally salient web-based physical activity program for African Americans. *Translational Journal of the American College of Sports Medicine*, 4(2), 8-15.

Liu, P.J., Conrad, K.J., Beach, S.R., Iris, M., & Schiamberg, L.B. (2019). The importance of investigating abuser characteristics in elder emotional/psychological abuse: Results from Adult Protective Services data. *Journals of Gerontology, Series B: Psychological Sciences and Social Sciences*, 74(5), 897-907.

PUBLICATIONS 2018-2019

JOURNALS

- MacNeil-Vroomen, J., Schulz, R., Doyle, M., Murphy, T.E., Ives, D.G. & Monin, J.K.** (2018). Time-varying social support and time to death in the Cardiovascular Health Study. *Health Psychology, 37*(11), 1000-1005.
- Martsof, G.R., Kandrack, R., Rodakowski, J., Friedman, E., Beach, S., Folb, B., & James, E.** (in press). Work performance among informal caregivers: A review of the literature. *Journal of Aging and Health*.
- Mattos, M.K., Sereika, S.M., Beach, S.R., Klunk, W.E., Knox, M., Nadkarni, N., Parker, L.S., Roberts, S., Schulz, R., Tamres, L., & Lingler, J.H.** (in press). Research use of ecological momentary assessment for adverse event monitoring following amyloid- β imaging. *Journal of Alzheimer's Disease*.
- McCarthy, A.E., Bove, A.M., Piva, S.R., Person Mecca, L. & Schneider, M.J.** (in press). A Qualitative study of preparation for lumbar spinal stenosis surgery: Perceptions of patients and physical therapists. *Journal of Orthopaedic & Sports Physical Therapy*.
- Meyer, O.L., Liu, X., Tancredi, D., Ramirez, A.S., Schulz, R., & Hinton, L.** (2018). Acculturation level and caregiver outcomes from a randomized intervention trial to enhance caregivers' health: Evidence from REACH 2. *Aging and Mental Health, 22*(6), 730-737.
- Miller, E., Beach, S.R., & Thurston, R.C.** (2018). Editorial: Addressing intimate partner violence and abuse of older or vulnerable adults in the health care setting – beyond screening. *JAMA Internal Medicine, 178*(12), 1583-1585.
- Monin, J.K., Doyle, M., Van Ness, P.H., Schulz, R., Marottoli, R., Birditt, K., Feeney, B.C., & Kershaw, T.** (2018). Longitudinal associations between cognitive functioning and depressive symptoms among older adult spouses in the Cardiovascular Health Study. *American Journal of Geriatric Psychiatry, 26*(10), 1036-1046.
- Monin, J.K., Levy, B., Doyle, M., Schulz, R., & Kershaw, T.** (2019). The impact of both spousal caregivers' and care recipients' health on relationship satisfaction in the Caregiver Health Effects Study. *Journal of Health Psychology, 24*(12), 1744-1755.
- Monin, J.K., Manigault, A., Levy, B.R., Schulz, R., Duker, A., Clark, M., Van Ness, P.H., & Kershaw, T.** (2019). Gender differences in short-term cardiovascular effects of giving and receiving support for health concerns in marriage. *Health Psychology, 38*(10), 936-947.
- Nieuwenhuis, A.V., Beach, S.R., & Schulz, R.** (2018). Care recipient concerns about being a burden and unmet needs for care. *Innovation in Aging, 2*(3), igy026.
- Posluszny, D.M., Bovbjerg, D.H., Agha, M.E., Hou, J.Z., Raptis, A., Boyiadzis, M.M., Dunbar-Jacob, J., Schulz, R., & Dew, M.A.** (2018). Patient and family caregiver dyadic adherence to the allogeneic hematopoietic cell transplantation medical regimen. *Psycho-Oncology, 27*(1), 354-358.
- Roumelioti, M.E., Steel, J.L., Yabes, J., Vowles, K.E., Vodovotz, Y., Beach, S., Rollman, B., Weisbord, S.D., Unruh, M.L., & Jhamb, M.** (2018). Rationale and design of technology assisted stepped collaborative care intervention to improve patient-centered outcomes in hemodialysis patients (TACcare trial). *Contemporary Clinical Trials, 73*, 81-91.
- Schulz, R.** (2019). Commentary on "Influence of positive and negative dimensions of dementia caregiving on caregiver well-being and satisfaction with life: Findings from the IDEAL study". *American Journal of Geriatric Psychiatry, 27*(8), 849-850.
- Schulz, R.** (2019). The future of caregiver efficacy research: Commentary on "long-term outcomes of the benefit-finding group intervention for Alzheimer caregivers." *American Journal of Geriatric Psychiatry, 27*(9), 995-997.
- Schulz, R., Beach, S.R., Czaja, S.J., Martire, L.M., Monin, J.K.** (in press). Family caregiving for older adults. *Annual Review of Psychology*.
- Schulz, R., Beach, S.R., Friedman, E.M., Martsof, G.R., Rodakowski, J., & James, A.E.** (2018). Changing structures and processes to support family caregivers of seriously ill patients. *Journal of Palliative Medicine, 21*(S2), S36-S42.
- Schulz, R., & Czaja, S.J.** (2018). Family caregiving: A vision for the future. *American Journal of Geriatric Psychiatry, 26*(3), 358-363.
- Sebat, E., Clougherty, J., Olafiranye, O., Magnani, J., Aiyer, A., Tripathy, S., Kinnee, E., Kip, K., & Reis, S.** (2018). Particulate matter air pollution and racial differences in cardiovascular disease risk. *Arteriosclerosis Thrombosis and Vascular Biology, 38*, 935-942.
- Sheffield, P.E., Herrera, M.T., Kinnee, E.J., & Clougherty, J.E.** (2018). Not so little differences: variation in hot weather risk to young children in New York City. *Public Health, 161*, 119-126.
- Sheffield, P.E., Shmool, J.L.C., Kinnee, E.J., & Clougherty, J.E.** (2019). Violent crime and socioeconomic deprivation in shaping asthma-related pollution susceptibility: a case crossover design. *Journal of Epidemiology and Community Health, 73*, 846-853.



Shmool, J.L.C., Johnson, I.L., Dodson, Z.M., Keene, R., Gradeck, B., Beach, S.R., & Clougherty, J.E. (2018). Developing a GIS-based online survey instrument to elicit perceived neighborhood geographies to address the uncertain geographic context problem. *The Professional Geographer*, 70(3), 423-433.

Smagula, S.F., Hasler, B., Schulz, R., Graves, J.L., Reynolds, C.F., Aizenstein, H.J., Buysse, D.J., Krafty, R.T., & Hall, M.H. (in press). Activity patterns related to depression symptoms in stressed dementia caregivers. *International Psychogeriatrics*.

Sneed, R.S., & Schulz, R. (2019). Grandparent caregiving, race, and cognitive functioning in a population-based sample of older adults. *Journal of Aging and Health*, 31(3), 415-438.

Stahl, S., & Schulz, R. (2019). Feeling relieved after the death of a family member with dementia: Associations with post-bereavement adjustment. *American Journal of Geriatric Psychiatry*, 27(4), 408-416.

Stahl, S.T., & Schulz, R. (2018). Restorative activities among bereaved caregivers of nursing home patients. *Geriatric Nursing*, 39(4), 414-418.

Tang, F., Jang, H., Mulvey, E.A., Lee, S., Musa, D., & Beach, S. (in press). Mental health among older adults with caregiving needs: The role of social networks. *Social Work Research*.

Tang, F., Jang, H., Rauktis, M.B., Musa, D., & Beach, S. (2019). The race paradox in subjective wellbeing among older Americans. *Ageing & Society*, 39, 568-589.

Tate, D.F., Lytle, L., Polzien, K., Diamond, M., Leonard, K.R., Jakicic, J.M., Johnson, K.C., Olson, C.M., Patrick, K., Svetkey, L.P., Wing, R.R., Lin, P.H., Coday, M., Laska, M.N., Merchant, G., Czaja, S.J., Schulz, R., & Belle, S.H. (2019). Deconstructing weight management interventions for young adults: Looking inside the black box of the EARLY consortium trials. *Obesity*, 27(7), 1085-1098.

Tripathy, S., Tunno, B., Michanowicz, D.R., Kinnee, E., Shmool, J.L.C., Gillooly, S., & Clougherty, J.E. (2019). Hybrid land use regression modeling for estimating spatio-temporal exposures to PM2.5, BC and metal components across a metropolitan area of complex terrain and industrial sources. *Science of the Total Environment*, 673, 54-63.

Tunno, B., Michanowicz, D.R., Shmool, J.L.C., Tripathy, S., Kinnee, E., Cambal, L., Chubb, L., Roper, C., & Clougherty, J.E.C. (2018). Spatial patterns in rush-hour vs. work-week diesel-related pollution across a downtown core. *International Journal of Environmental Research and Public Health*, 15 1968.

Vazeou-Nieuwenhuis, A., Beach, S.R., & Schulz, R. (in press). Care recipient concerns about being a burden and unmet needs for care. *Innovation in Aging*.



BOOKS / BOOK CHAPTERS / OTHER PUBLICATIONS

Courtney, K.L., Antonio, M., Garnett, A., & Matthews, J.T. (2019). [Applying the behavior change technique taxonomy to mobile health applications: A protocol](#). *Studies in Health Technology and Informatics*, 257, pp. 64-69. IOS Press Ebooks.

Deitrick, S. (2019). [Most livable Pittsburgh](#). In F. Wagner & R.W. Caves (Eds.), *Community Livability, 2nd Edition* (pp. 16-28). London, UK: Taylor & Francis Group/Routledge.

Schulz, R. (2020). [The intersection of family caregiving and work: Labor force participation, productivity, and caregiver well-being](#). In S.J. Czaja, J. Sharit, & J.B. James (Eds), *Current and Emerging Trends in Aging and Work* (pp. 399-413). Cham, Switzerland: Springer Nature Switzerland AG.

Schulz, R., & Monin, J. (2018). [Suffering and compassion in older adult caregiving relationships](#). In T. Boll, D. Ferring, & J. Valsiner (Eds.), *Cultures of Care in Aging* (pp. 213-242). Charlotte, NC: Information Age Publishing.

TECHNICAL REPORTS

Blackhurst, M. (2018). [Predicting lead water service line locations for improving mitigation strategies](#). UCSUR, University of Pittsburgh.

Blackhurst, M. (2018). [Do lead water laterals affect property values? A case study of Pittsburgh, PA](#). UCSUR, University of Pittsburgh.

Briem, C. (Ed.). (Ongoing). [Pittsburgh Economic Quarterly \(PEQ\)](#), a publication of the Urban and Regional Analysis Program at UCSUR covering economic conditions/ changes in the Pittsburgh region.

Deitrick, S., Briem, C., Cain, C., Pages, E.R., & Baisden, F. (July 2018). [A comprehensive assessment of Pennsylvania military installations / impacts](#). UCSUR, University of Pittsburgh.

Magalotti, M.J., Deitrick, S., & Blackhurst, M. (2018). [Evaluating bicycle, pedestrian, transit and economic data collection needs and measures of effectiveness in Pennsylvania](#). UCSUR, University of Pittsburgh.

Regional Indicators Project, PittsburghTODAY. (Ongoing). [Pittsburgh today & tomorrow: The facts and the future of our region](#). UCSUR, University of Pittsburgh. Follow us on Twitter: @PittCSUR



University of
Pittsburgh

University Center for Social and Urban Research

3343 Forbes Avenue
Pittsburgh, PA 15260

T. 412-624-5442
F. 412-624-4810
E. ucsur@pitt.edu
ucsur.pitt.edu

To learn more about UCSUR's
survey research capabilities,
programs, ongoing projects,
and staff, visit our web site at:
<http://www.ucsur.pitt.edu>

Follow us on Twitter: @PittCSUR