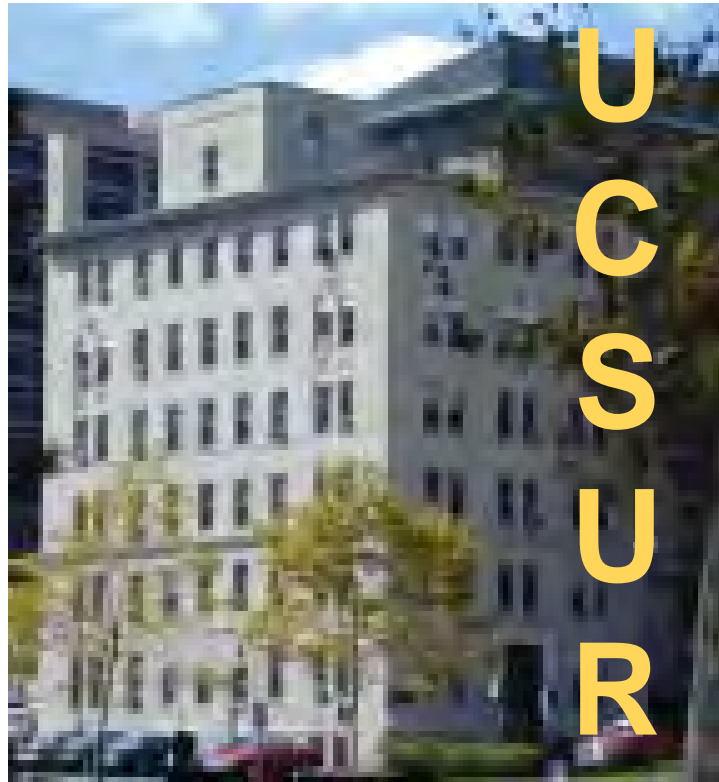


**UNIVERSITY CENTER FOR
SOCIAL AND URBAN RESEARCH**



ANNUAL REPORT
JULY 1, 2004 - JUNE 30, 2005

UNIVERSITY OF PITTSBURGH

UCSUR

ANNUAL REPORT

JULY 1, 2004 - JUNE 30, 2005

UNIVERSITY CENTER FOR
SOCIAL AND URBAN RESEARCH

121 UNIVERSITY PLACE
PITTSBURGH, PA 15260

TELEPHONE: 412-624-5442

TELEFAX: 412-624-4810

EMAIL: UCSUR@PITT.EDU

WEB: [HTTP://WWW.UCSUR.PITT.EDU](http://www.ucsur.pitt.edu)

WHO WE ARE

UNIVERSITY CENTER FOR SOCIAL AND URBAN RESEARCH

The University Center for Social and Urban Research (UCSUR) was established in 1972 to serve as a resource for researchers and educators interested in the basic and applied social and behavioral sciences. As a hub for interdisciplinary research and collaboration, UCSUR promotes a research agenda focused on the social and economic issues most relevant to our society, including regional economic analysis and forecasting; the psychosocial impacts of adult development and aging; intergenerational relations; and environmental resource management. In addition, UCSUR maintains a permanent research infrastructure available to faculty and the community with the capacity to: (1) conduct all types of survey research and data analysis; (2) carry out regional econometric modeling; (3) analyze qualitative data using state-of-the-art computer methods, including web-based studies; (4) obtain, format, and analyze spatial data; (5) acquire, manage, and analyze large secondary and administrative data sets including Census data; and (6) design and carry out descriptive, evaluation, and intervention studies. UCSUR plays a critical role in the development of new research projects through consultation with faculty investigators.

The long-term goals of UCSUR fall into three broad domains: (1) provide state-of-the-art research and support services for investigators interested in interdisciplinary research in the behavioral and social sciences; (2) develop nationally recognized research programs within the Center in a few selected areas; and (3) support the teaching mission of the University through graduate student, post-doctoral, and junior faculty mentoring, teaching courses on research methods in the social sciences, and providing research internships to undergraduate and graduate students. Achieving these goals requires that we continually upgrade and improve the research infrastructure of the Center, and that we recruit, develop, and maintain a core staff of investigators capable of being leaders in their fields.

MESSAGE FROM THE DIRECTOR

I am pleased to share with you an update of activities and accomplishments of the Center for the academic year 2004-2005. The Center continues to aggressively pursue opportunities to enhance its research infrastructure, broaden the range of support services available to faculty and the community, expand the participation of faculty and graduate students in Center research programs, and strengthen University-community collaborations. The Center continues to serve as the interdisciplinary crossroads for schools throughout the University and has become a major resource in mentoring and supporting the research careers of junior faculty and post-doctoral students.



During the current year, we pursued three important new initiatives: (1) We made a major addition to the research infrastructure of the Center by establishing a program in computerized qualitative data analysis under the direction of Dr. Stuart Shulman. Although we have always been strong in the collection, management, and analysis of highly structured data, this new program gives us the capacity to manage and analyze responses to open-ended verbal questions, written documents, and all forms of unstructured communications using state-of-the-art computer based methods. (2) We added a new research area to the Center on gender and work under the direction of Drs. Sabina Deitrick, Ralph Bangs, and Audrey Murrell. Along with other faculty throughout the University, this group will initially focus on gender-related wage disparities in the region. (3) In collaboration with the University of Pittsburgh's Council on Aging and Institute on Aging, the Center was instrumental in creating a graduate Certificate Program in Gerontology, designed to expand the educational mission of the Center. This program is housed in the Center and involves all of the professional schools of the University. Although less than a year old, it has exceeded its enrollment goals more than twofold.

The Center remains committed to continued self-assessment and improvement, and we look to your guidance for shaping the future development of the Center.

WHAT WE DO: CENTER RESOURCES

SURVEY RESEARCH SERVICES AND CAPABILITIES

UCSUR provides survey research services through the Survey Research Program (SRP). SRP maintains a highly experienced staff of survey professionals, trained interviewers, and data management specialists. SRP services are available to faculty, staff, and students throughout the University and to local, state, and federal agencies and others working in the public interest.

SRP is able to carry out any or all phases of a survey research project, including sample design, questionnaire design, data collection, data processing, statistical analysis, and reporting. SRP staff have the training and experience to design scientifically valid studies customized to client research needs. SRP can help clarify study objectives, and provide advice on how to obtain the highest quality data within available resource constraints. More specifically, SRP provides assistance in the following areas:



Sample Design

SRP staff provide advice on sampling methodology and sample size to meet study objectives and budget. Services include in-house development of specialized sample frames, or consultation with commercial sampling firms to obtain an appropriate sample. Examples of the types of samples provided include:

- **Random digit dialing (RDD) samples:** particularly suited for telephone surveys of the general population, computer-generated telephone numbers are used to target specific geographic areas, including both listed and unlisted phone numbers. RDD sampling for any region of the United States is available.
- **Targeted/listed samples:** samples to reach specific subgroups or rare populations. These are useful for telephone recruitment of participants for larger studies. They are also used for supplementing RDD samples with oversamples of rare populations.

Data Collection Methodology

SRP staff can provide:

- Advice on the most productive and cost-effective method of data collection (mail, telephone, in-person, or internet/web-based).
- Specification of procedures for maximizing response rates within the framework of available resources. For example, recommended number of attempts to contact respondents, securing initial cooperation, following-up incomplete interviews, converting refusals into acceptances, and use of mixed-mode designs.

Questionnaire Development

SRP staff can provide assistance with all aspects of the development of a reliable and valid instrument, including:

- Writing, formatting, and ordering questions
- Asking sensitive questions
- Instrument pre-testing

SURVEY RESEARCH SERVICES AND CAPABILITIES

Interviewing and Data Collection

SRP conducts local, regional, and national telephone and mail surveys with both general and special populations, as well as in-person surveys in the Southwestern Pennsylvania region. SRP also conducts internet/web-based surveys.

SRP relies on a pool of experienced interviewers for telephone and in-person surveys. These include both undergraduate and graduate students, as well as non-students under the management of senior field work supervisors.

Interviewer training and quality control:

Interviewers are trained in general and project-specific interviewing techniques, such as maintaining objectivity, reading questions as written, and securing respondent cooperation. Training involves a combination of lecture, written handouts, video instruction, and role-playing. Interviewers are continuously monitored during data collection for quality assurance, and periodic re-training sessions occur as necessary.

Computer-assisted telephone interviewing: A thirty-two line phone bank at UCSUR is dedicated to a computer-assisted telephone interviewing (CATI) system. Interviewers read questions as they appear on the screen and enter the respondents' answers directly into the computer. CATI allows complex question contingencies, sample management, and call scheduling to be handled automatically.

Web-based data collection: SRP has the capability to conduct web-based surveys and other online data collection and management. UCSUR operates secure servers that host such activities.

Additional data collection services: Telephone surveys using paper/pencil methodology, mail surveys, and in-person surveys in the Southwestern Pennsylvania region, are also available.

Data Management

Using a variety of computer programs, languages, data base management software, and operating systems, SRP staff are available to perform a number of data management functions, including data base development, editing, coding, and survey data processing.

SRP staff also have the capability to integrate survey respondent data with GIS-based spatial data, and with other secondary data sources.

Statistical Analysis of Survey Data

SRP staff can perform statistical analyses of survey data, ranging from simple tabulations to relatively complex statistical modeling using a variety of statistical packages. Analytic capabilities include:

- Descriptive statistical analyses of survey responses, including calculations of sampling error, and statistical adjustments for unequal selection probabilities and non-response.
- Cross-classification analyses with demographic or other predictive factors.
- Multivariate analyses, including ANOVA, factor analysis, linear and non-linear regression, logistic regression, categorical methods, and structural equation modeling.
- Longitudinal analyses.

Report Preparation and Presentation

SRP staff have experience in the production of a variety of reports, including:

- Simple tabulations
- Executive summaries
- In-depth narrative report
- Oral presentation of results to interested parties

QUALITATIVE DATA ANALYSIS

From biomedical, public health, and educational research, to the behavioral, computational, and social sciences and beyond, effective qualitative data analysis plays a critical role. Accurate and reliable coding using computers is central to the qualitative analysis process. For new and experienced researchers, learning advanced project management skills or even software basics adds hours of struggle in trial-and-error sessions.

Experienced coders can deliver the data you need in a timely and expert manner, without the struggle. For this reason, we have created the Qualitative Data Analysis Program (QDAP) as the newest program initiative at the University of Pittsburgh's University Center for Social and Urban Research (UCSUR). Drawing on a unique blend of expertise in qualitative data analysis, ongoing collaboration with computer scientists, and several years of funded research, QDAP offers a rigorous approach to analyzing text and managing projects

Value-Added Coding

We can code text from a wide variety of sources. Original material for analysis might include in-depth interviews, open-ended survey answers, field notes, transcripts from focus groups or Web logs (blogs), e-mails, Web site content, results from database searches (such as LexisNexis™), congressional testimony or other historical texts, and a host of other unstructured but digitized text data sets. QDAP employs only University of Pittsburgh graduate students and UCSUR professional staff trained in using ATLAS.ti (www.atlasti.com). ATLAS.ti is a PC-based workbench that supports project management, enables multiple coders to collaborate on a single project, and generates output that facilitates the analysis process.

Provide us with the raw data and your analytical vision. We will work with your research team to craft a plan with a tailored methodology designed to code the text for key concepts and relationships. This allows you to focus on the larger analytical questions while we quickly and reliably extract the data that you tell us you need to reach valid inferences.

We offer professional support for key project management tasks such as:

- Data preparation and cleaning
- Data management and storage
- Data distribution and unification
- Code development and testing
- Rater reliability reporting
- Results analysis and expression

QDAP will provide you with a team of trained coders and a graduate student or UCSUR staff project manager. We also work collaboratively with the qualitative research consultants at ResearchTalk Inc., preparing researchers and their students to be more fluent in the project life cycle using ATLAS.ti.

Reliable Observations of Phenomena

We offer a robust mix of existing and experimental tools, careful iterative techniques, and energetic, participatory training. Our goal is to work with researchers interested in generating studies with significant and accurately reported inter-rater agreement rates. QDAP's professionally trained coders and project managers, in combination with UCSUR's professional staff, will lend objectivity and external validity to your qualitative project.

WHAT WE DO: CENTER RESOURCES...CONTINUED

ENVIRONMENTAL DECISION SUPPORT

Geographic Information Services

Geographic Information Services are available to faculty at the University of Pittsburgh and to non-profit organizations through the Environmental Decision Support (EDS) Program at UCSUR. The intent of these services is to meet the growing need for spatially represented data and analysis in many disciplines. While there is a variety of Geographic Information Systems (GIS) skills across the University, there is no single unit dedicated to meeting GIS research and teaching needs of the faculty.

Appropriate spatial data are critical to GIS. EDS can provide assistance in obtaining and formatting data. Some commonly used data sets are available within the University, and others are available at state and federally sponsored web sites.

EDS seeks to offer services that are not available elsewhere at the University. Due to limited resources, services are not available to students. Services may be provided free, or for a fee that covers costs, depending upon the magnitude and complexity of the service provided.

Services Provided

- Assistance in obtaining spatial data and converting to appropriate GIS formats (e.g., MapInfo to ArcView)
- Spatial mapping of GIS data
- Assistance in creating presentations meeting client needs
- Assistance in obtaining, formatting, and projecting spatial data for faculty use in classrooms
- Assistance in combining spatial and non-spatial data
- Limited spatial analysis of data, depending upon complexity and time
- Full color printing of maps at fees sufficient to cover costs
- Digital scanning and creation of digital files in formats appropriate for client use
- Digitizing of spatial features

Equipment and Software Services

At this time, EDS is able to provide full ArcView and limited ArcInfo based services. The equipment is high quality, but not designed for large, complex GIS tasks. The equipment includes:

- Gateway GP7-750MHz Pentium III with 256MB SDRAM, 34GB Ultra ATA hard drive, IOMEGA 250MB internal ZIP, R/W/R CD drive and Windows NT
- Gateway 7200 Pentium IV (3.2 GHZ) with 1 GB RAM
- Medium-size Epson 836XL scanner, capable of 1200dpi and 12x17" scan
- Altek/Kurta DT-4 digitizer capable of 1000 pt/inch resolution with a 24x36" active digitizing area

REGIONAL ECONOMIC ANALYSIS

UCSUR studies major economic and demographic trends in the Pittsburgh region in the national context. The policy consequences of these shifts, especially the strategies for economic development and job creation, are analyzed. In addition to the performance of the regional economy, specific strategic economic sectors are analyzed through in-depth studies. The results of such studies are disseminated widely to the region's policymakers and relevant organizations. The program also fosters the development of new methods of data collection and analysis as well as scholarly publications by participating faculty, research staff, and graduate students.

Urban Regional Analysis has been an important element of UCSUR's commitment to providing regional economic policy analysis capabilities to policymakers and the academic community.

The Pittsburgh Regional Economic Model

The Pittsburgh Regional Economic model is a large-scale regional econometric model developed by Regional Economic Models Inc. (REMI) and supported by UCSUR in partnership with the Southwestern Pennsylvania Commission. The REMI model provides a powerful framework for economic analysis related to structural change in the Pittsburgh region and complements a variety of activities undertaken by the Center. The Center continues to maintain this model and provide support to local agencies as needed as part of the need for quality regional economic forecasting and impact analysis in the region.

The Pittsburgh REMI model is calibrated by UCSUR staff based on local conditions and our 11 years of experience with applying the model to the Pittsburgh region. This capability to forecast future regional economic conditions and conduct detailed impact analysis of potential changes in the regional economy is unique in the region.

The model includes the seven county Metropolitan Statistical Area (Allegheny, Armstrong, Beaver, Butler, Fayette, Washington, and Westmoreland) plus Greene and Indiana counties. This model enables us to analyze economic and demographic impacts across the Southwestern Pennsylvania region.

Support of the Southwestern Planning Commission (SPC)

UCSUR continues to support the Southwestern Planning Commission (SPC) in developing its forecast of regional population and employment for the region. This is a primary function of the REMI model, which is essential to this project because of its extensive demographic modeling capability. UCSUR staff provide both technical and research consulting to SPC to aid its use of the REMI model and in producing as accurate a forecast as is possible for the region. The SPC needs these baseline forecasts and the REMI model in order to evaluate a range of transportation projects for the region and decide on funding priorities. The SPC is also required by federal mandate to provide 30-year projections of population and employment to the Department of Transportation as part of their planning process.

Workforce Development and Labor Demand Tracking

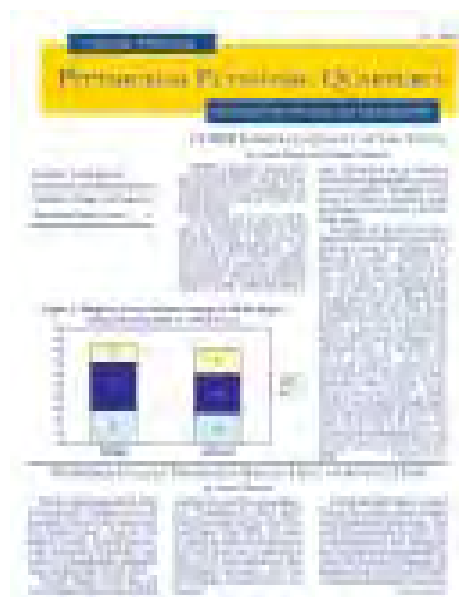
The Center uses ES-202 employment data collected by the state of Pennsylvania to provide a crucial source of labor supply information needed by local business and government leaders. As the labor supply tightens both nationally and locally, the ability to attract new businesses is growing more and more dependent on the quality and quantity of the local labor force. This data source provides the Center with an opportunity to improve labor force information and analysis for the policymaking organizations in the region.

WHAT WE DO: CENTER RESOURCES...CONTINUED

Pittsburgh Economic Quarterly

UCSUR continues to publish the Pittsburgh Economic Quarterly (PEQ) to support organizations and staff involved with economic development throughout the region. The goal of the PEQ has been to highlight the important economic trends that impact the regional economy and the competitiveness of local industries. PEQ is an extension of the continuing work done at UCSUR. Each issue includes the latest data on regional employment and economic conditions. Feature articles cover a variety of issues relating to the regional economy and how it is changing, along with analyses of other economic and social factors that directly impact the future of the region. Significant positive response to the PEQ has resulted and has filled a major need in the region for ongoing study of current economic trends. Recent issues of PEQ addressed these key topics:

- Pittsburgh Female Labor Force Participation Rates
- Pittsburgh's Housing Market
- Oakland Economy
- UCSUR's Quality of Life Survey
- Migration and Mobility of Pittsburgh College Graduates
- Population Change in the Pittsburgh Region, 2000-2002
- Prescription Drug Coverage Among Allegheny County Seniors
- City of Pittsburgh's Fiscal Conditions
- Benchmark Findings on Pittsburgh Region African Americans and Women
- Diversity Among Local Elected Officials
- Unionization Trends
- Services Needs of Allegheny County Elderly



ACQUISITION AND MANAGEMENT OF SECONDARY DATA

UCSUR provides assistance for secondary data acquisition and management to the academic community and to the Pittsburgh region as a whole. As an affiliate of the Pennsylvania State Data Center, the official source of demographic and economic data for the state, UCSUR is a repository for electronic and printed Census information, including Census 2000 data. UCSUR also acquires and maintains a variety of government statistics, economic and labor market data, and other types of secondary information on a regular basis. This information is available to the academic community and to the general public.

The data acquisition and management services UCSUR provides include:

- Assistance in acquiring secondary data stored at UCSUR to interested individuals and organizations
- Assistance in locating and acquiring a variety of other types of secondary information
- Expertise and consultation in the appropriate use and understanding of various secondary data sources
- Evaluation and interpretation of policy relevant secondary information data for government, business, labor, media and other organizations

UCSUR also conducts demographic, economic and policy research and analysis and reports on secondary data and data trends relevant to the Pittsburgh region, both alone and in combination with various primary data sources. This research is reported through a number of venues, including research reports and newsletters, such as the Pittsburgh Economic Quarterly.

WHAT WE DO: CENTER RESOURCES...CONTINUED

PROGRAM EVALUATION SERVICES

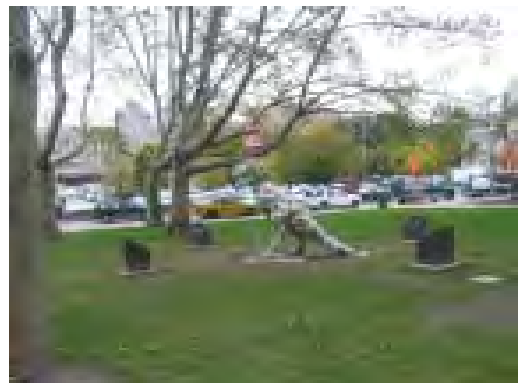
The University Center for Social and Urban Research (UCSUR) can assist faculty at the University of Pittsburgh and community agencies with their program evaluation needs. We provide assistance in developing and designing evaluation plans, collecting and analyzing data, and writing evaluation reports. Depending on the focus of the project, these services can be provided by the Survey Research Program, Qualitative Data Analysis Program, Urban and Regional Analysis Program, or Gerontology Program.

UCSUR's interdisciplinary staff have evaluation experience in a wide range of content areas, including social service programs, behavioral and mental health services, public health programs, and educational services. UCSUR has conducted evaluations on family support, home visiting, after school and youth development, conflict resolution, developmental disabilities, maternal and child health, fatherhood, and parent education programs, among many others.

In addition, UCSUR has expertise in developing and implementing management information systems and needs assessments. UCSUR provides training and technical assistance to increase the capacity of staff to carry out evaluations, either independently or in collaboration with program evaluation specialists.

Specific evaluation services offered include:

- Development of evaluation designs, including process and outcome evaluations
- Assistance with program design, focusing on connecting program activities to expected outcomes (program logic models)
- Needs assessments
- Selection of appropriate outcomes and measurement methods
- Identification of assessment instruments
- Development of surveys for program evaluation
- Data analysis consultation and research design
- Referral to evaluation consultants with expertise in specific content areas



PROGRAMS

In response to faculty interests and current domestic policy issues, UCSUR develops interdisciplinary research programs that address regional and national policy issues. The resources described in the previous section are provided by one or more of these programs. As new policy issues emerge, UCSUR is prepared to facilitate and coordinate the development of additional programs identified by interested faculty. Existing research programs include:

Environmental Decision Support (EDS)

Stephen C. Farber: Program Director

Established in response to a regional need for environmental resource management decision support. Researchers from a broad range of natural sciences, social sciences, and engineering disciplines focus on complex environmental issues using Geographic Information Systems as a tool for data integration and modeling.

Gerontology

Richard Schulz: Program Director

Lynn Martire: Associate Program Director

Acts as a catalyst and coordinator for the multidisciplinary study of aging. It aids communication and proposal development and operates as the information hub for research, training, and aging-related services throughout the University. While the main focus of the program remains on the psychosocial and health policy aspects of aging, faculty are also actively involved in gerontology training, basic cognitive science research, and epidemiologic studies of the elderly.

Qualitative Data Analysis Program (QDAP)

Stuart W. Shulman: Program Director

Offers a rigorous approach to managing and analyzing text based data, including data preparation and cleaning, data management and storage, data distribution and unification, code development and testing, rater reliability reporting, and results analysis and expression.

Survey Research Program (SRP)

Scott Beach: Program Director

Maintains a highly experienced staff of survey professionals, trained interviewers, and data management specialists. SRP services are available to faculty, staff, and students throughout the University and to local, state, and federal agencies and others working in the public interest. SRP offers the capability to execute any or all phases of a survey research project, including sample design, questionnaire construction, data collection, data processing, statistical analysis, and reporting.

Urban and Regional Analysis (URA)

Ralph L. Bangs: Co-Program Director

Sabina Deitrick: Co-Program Director

Promotes scholarly analysis of urban and regional problems. Its multidisciplinary research, which is local, national, and international in character, touches on issues that further our understanding of the causes and consequences of economic and social change, enhances the analytic basis for public policy decisions, and aids in the evaluation of policy alternatives.

Projects conducted in all these areas illustrate the Center's commitment to enhancing scientific understanding of social phenomena while generating information for improved policymaking in both the public and private sectors.

FACULTY DEVELOPMENT AWARDS

In memory of Steven D. Manners, who began working at the Center in 1974 and served as its Assistant Director from 1989 until his death in September 2000, UCSUR initiated a Faculty Development Awards program in recognition of Mr. Manners' contributions to the Center and the University community.



Steven D. Manners

UCSUR offers annually two awards of up to \$10,000 each. Faculty may apply for awards in two categories: (1) Research Development Grants to support pilot research in the social, behavioral, and policy sciences; and (2) Infrastructure Development Awards aimed at enhancing faculty capabilities to carry out interdisciplinary research in the social, behavioral, and policy sciences.

Awardees in 2005 were: Charlotte Brown, Associate Professor of Psychiatry and Faculty Affiliate, Center on Race and Social Problems; Bruce S. Ling, Assistant Professor of Medicine, Institute for Doctor-Patient Communication; Eva Marie Shivers, Assistant Professor, Psychology in Education-Applied Developmental Psychology, School of Education.

Awardees in 2004 were: Ellen Olshansky, Professor and Chair, Health and Community Systems, School of Nursing; Seung-Hyun Yoo, Research Assistant Professor, Behavioral and Community Health Sciences, Graduate School of Public Health; and Susan Zickmund, Assistant Professor, Department of Medicine.

Because of the large number of applications in June 2003, UCSUR decided to fund six awards totaling \$38,500. Awardees in 2003 were: Pamela Peele, Associate Professor, Health Economics; William Klein, Assistant Professor, Psychology; Daniel Rosen, Assistant Professor, School of Social Work; Lisa Brush, Associate Professor Sociology; Audrey Murrell, Associate Professor, Joseph M. Katz Graduate School of Business; and Jeannette Trauth, Assistant Professor, Graduate School of Public Health.

Awardees in 2002 were: Maureen Porter, Assistant Professor, Administrative and Policy Studies; and Scott F. Kiesling, Assistant Professor, Linguistics.

Awardees in 2001 were: Miriam Hertz, Assistant Professor, Health Information Management/Rehabilitation Science and Technology; and Paul E. Griffiths, Professor, History and Philosophy.

BOARD OF VISITORS

Mr. Michael A. Bryson
Chair, UCSUR's Board of Visitors
Executive Vice President of Finance
Chief Financial Officer
Mellon Financial Corporation
Pittsburgh, PA

Anderson Dodd Smith, Ph.D.
Associate Dean, College of Sciences
Georgia Institute of Technology
Atlanta, GA

Mr. Earl F. Hord
University of Pittsburgh Board of Trustees
Pittsburgh, PA

James House, Ph.D.
Survey Research Center
Institute for Social Research
University of Michigan
Ann Arbor, MI

Larry C. Ledebur, Ph.D.
Director, The Urban Center
Maxine Goodman Levin College of Urban Affairs
Cleveland State University
Cleveland, OH

Ms. Cynthia L. Roth
Vice Chancellor for Institutional Advancement
University of Pittsburgh
Pittsburgh, PA

CORE STAFF

Administration

Director: Richard Schulz

Business Manager: John Hajner

Administrative Assistants: Anna Aivaliotis, Donna M. King

Systems Administrator: James R. Lefcakis

Urban and Regional Analysis

Co-Program Director: Ralph L. Bangs

Co-Program Director: Sabina Deitrick**

Research Specialist: Christopher Briem

Research Assistant: Monique Huggins

Survey Research

Director: Scott R. Beach

Research Associate: Donald Musa

Senior Research Specialists: Janet Schlarb, Stephen Strotmeyer

Web Development/Data Analyst: Robert Keene

Research Specialist: Christine Bottles

Fieldwork Coordinators: Lynda Connelly, Martha Garritano, Laurel Person, Olivia Wilson

Data Entry Specialists: Barbara Dughri, Olivia Kirsch



Qualitative Data Analysis

Director: Stuart W. Shulman

Gerontology

Program Director: Richard Schulz

Associate Program Director: Lynn Martire**

Associate Director, Geriatric Education Center: John Hennon

Project Coordinators/Assistants: Elaine Aivaliotis, Jennifer Bissell, Angela Dodds, Julie Klinger, Amy Lustig, Mary Parks, Karen Schmidt**

Systems Analysts/Statisticians: Kathleen McGinnis, Bozena Zdaniuk

Interviewers/Interventionists: Mary Alberth, Rhoda Dorfzaun, Sally Hostein

Generations Together

Journal Editor/Emeritus Director: Sally Newman

Environmental Decision Support

Program Director: Stephen C. Farber**

** Indicates participating faculty, not UCSUR staff

FACULTY ASSOCIATES

The following individuals serve as faculty associates, representing numerous schools, departments, institutes, and centers.

Charles David Boucek	Anesthesiology	William B. Kory	Geography
Lakshminpathi Chelluri	Anesthesiology	Siddharth Chandra	Graduate School of Public and International Affairs
Carl A. Sirio	Anesthesiology	Louise Comfort	Graduate School of Public and International Affairs
John P. Williams	Anesthesiology	Phyllis Coontz	Graduate School of Public and International Affairs
Frank S. McGlynn	Anthropology	Sabina Deitrick	Graduate School of Public and International Affairs
Hugo Nutini	Anthropology	Stephen Farber	Graduate School of Public and International Affairs
Richard Scaglione	Anthropology	Leon L. Haley	Graduate School of Public and International Affairs
Mark Redfern	Bioengineering	James D. Luketich	Graduate School of Public and International Affairs
Gary M. Marsh	Biostatistics	David Y. Miller	Graduate School of Public and International Affairs
William R. Love	Business Information Systems	Clyde Mitchell-Weaver	Graduate School of Public and International Affairs
Stanley J. Kabala	Center for Environmental Research & Education	Lisa S. Nelson	Graduate School of Public and International Affairs
Amy M. Kilbourne	Center for Research on Health Care	Elsie R. Broussard	Graduate School of Public Health
Alberta Sbragia	Center for Western European Studies	Howard B. Degenholtz	Graduate School of Public Health
Nicholas F. Jones	Classics	Judith R. Lave	Graduate School of Public Health
Mary L. Marazita	Cleft Palate-Craniofacial Center	Chyongchiou J. Lin	Graduate School of Public Health
Frank A. Ghinassi	Clinical Administration	Beaufort B. Longest, Jr	Graduate School of Public Health
Susan Kinsey	College of General Studies	Sandra J. Quinn	Graduate School of Public Health
Christine A. Dollaghan	Communication Science and Disorders	Ravi Sharma	Graduate School of Public Health
Catherine V. Palmer	Communication Science and Disorders	Myrna Silverman	Graduate School of Public Health
Connie A. Tompkins	Communication Science and Disorders	Stephen Thomas	Graduate School of Public Health
J. Scott Yaruss	Communication Science and Disorders	Seymour Drescher	History
Vincenne A. Waxwood	Communications	Laurence A. Glasco	History
John Wilds	Community/Government Relations	Edward K. Muller	History
Stephen Zupcic	Community/Government Relations	Fritz Ringer	History
Bruce Buchanan	Computer Science/Intelligent Systems	Lisa S. Parker	Human Genetics
Panos Chrysanthis	Computer Science	Anthony J. Silvestre	Infectious Diseases/Microbiology
Milos Hauskrecht	Computer Science	Susan Alman	Information Sciences
Rami Melhem	Computer Science	Hassan Karimia	Information Sciences
Daniel Mosse	Computer Science	Stuart W. Shulman	Information Sciences
Walter Antonio Bretz	Dental Medicine	Brian Butler	Katz Graduate School of Business
John M. Close	Dental Medicine	Carrie R. Leana	Katz Graduate School of Business
James Guggenheimer	Dental Medicine	Marick F. Masters	Katz Graduate School of Business
Titus Schleyer	Dental Medicine	Robert Nachtmann	Katz Graduate School of Business
Jon B. Suzuki	Dental Medicine	John E. Prescott	Katz Graduate School of Business
Robert Weyant	Dental Medicine	Ronald A. Brand	Law
Frank Giarratani	Economics	Vivian Curran	Law
Gene Gruver	Economics	Lawrence A. Frolik	Law
Louis A. Chandler	Education	David Herring	Law
Mary Duquin	Education	Alan Meisel	Law
Carl I. Fertman	Education	Mary Kay Stein	Learning Research and Development Center
Meryl K. Lazar	Education	James M. Roberts	Magee-Women's Research Institute
Steven R. Lyon	Education	Derek C. Angus	Medicine
Robert Nelkin	Education	Robert M. Arnold	Medicine
Claudia M. Pagliaro	Education	Cindy L. Bryce	Medicine
Maureen Porter	Education	Robert Cook	Medicine
Alice M. Scales	Education	Michael Fine	Medicine
Neil H. Timm	Education	Cynthia Gadd	Medicine
Sekai Turner	Education	Randy Hebert	Medicine
Joan I. Vondra	Education	John Kellum, Jr.	Medicine
Vince N. Mosesso, Jr.	Emergency Medicine	Anne B. Newman	Medicine
Paul M. Paris	Emergency Medicine	Edward Post	Medicine
Christopher J. Earls	Engineering	P. Sudhakar Reddy	Medicine
Jeen-Shang Lin	Engineering	Eric Rodriguez	Medicine
Ronald D. Neufeld	Engineering	Robert E. Schoen	Medicine
David Bartholomae	English	Rakesh Sindi	Medicine
Eric O. Clarke	English	Stephanie Studenski	Medicine
Marcia Landy	English	Galen Switzer	Medicine
Elizabeth Matway	English	Mark Unruh	Medicine
Joseph J. Schwerha	Environmental/Occupational Health	Debra K. Weiner	Medicine
Steven Belle	Epidemiology	Andrew N. Weintraub	Music
Joyce T. Bromberger	Epidemiology	Edward Stricker	Neuroscience
Jane A. Cauley	Epidemiology	Catherine Bender	Nursing
Andrea Kriska	Epidemiology	Rose E. Constantino	Nursing
Roberta Ness	Epidemiology	Willa M. Doswell	Nursing
Joel L. Weissfeld	Epidemiology		
Jonathon Erlen	Falk Library/Public Health		
Valerie Grash	Fine Arts		
Yves Citton	French and Italian		

Judith A. Erlen	<i>Nursing</i>
Julia Ann Greenawalt	<i>Nursing</i>
Judith Talbolt Matthews	<i>Nursing</i>
Ann M. Mitchell	<i>Nursing</i>
Elizabeth A. Schlenk	<i>Nursing</i>
Joan C. Rogers	<i>Occupational Therapy</i>
James J. Irrgang	<i>Orthopedic Surgery</i>
Bruce S. Rabin	<i>Pathology</i>
Parmjeet Randhawa	<i>Pathology</i>
Melanie A. Gold	<i>Pediatrics</i>
Raymond Davis Pitetti	<i>Pediatrics</i>
Abhay Vats	<i>Pediatrics</i>
Selma F. Witchel	<i>Pediatrics</i>
Pouran Famili	<i>Periodontics</i>
Teresa Donegan	<i>Pharmacy</i>
Bobbie Farrah	<i>Pharmacy</i>
Timothy George	<i>Pharmacy</i>
Denise Sokos	<i>Pharmacy</i>
Jessie VanSwearingen	<i>Physical Therapy</i>
David Barker	<i>Political Science</i>
Susan Hansen	<i>Political Science</i>
John Hurwitz	<i>Political Science</i>
Jack L. Daniel	<i>Provost Office</i>
Boris Birmaher	<i>Psychiatry</i>
David Brent	<i>Psychiatry</i>
Mary Amanda Dew	<i>Psychiatry</i>
John E. Donovan	<i>Psychiatry</i>
Linda J. Ewing	<i>Psychiatry</i>
Martica Hall	<i>Psychiatry</i>
Robert S. Marin	<i>Psychiatry</i>
Lynn Martire	<i>Psychiatry</i>
Karen A. Matthews	<i>Psychiatry</i>
Timothy Monk	<i>Psychiatry</i>
Lisa A. Morrow	<i>Psychiatry</i>
Rick Morycz	<i>Psychiatry</i>
Benoit H. Mulsant	<i>Psychiatry</i>
Edward P. Mulvey	<i>Psychiatry</i>
Herbert L. Needleman	<i>Psychiatry</i>
Bruce Pollock	<i>Psychiatry</i>
Charles F. Reynolds III	<i>Psychiatry</i>
Ihsan M. Salloum	<i>Psychiatry</i>
Karen Schmidt	<i>Psychiatry</i>
Magda Stouthamer-Loeber	<i>Psychiatry</i>
Kenneth S. Thompson	<i>Psychiatry</i>
Martin Greenberg	<i>Psychology</i>
Christina Groark	<i>Psychology</i>
Thomas W. Kamarck	<i>Psychology</i>
William Klein	<i>Psychology</i>
John Levine	<i>Psychology</i>
David Marsh	<i>Psychology-Greensburg</i>
Robert McCall	<i>Psychology</i>
Daniel Shaw	<i>Psychology</i>
Steven E. Stern	<i>Psychology-Johnstown</i>
Nancy Condee	<i>Slavic Languages and Literatures</i>
Vladimir Padunov	<i>Slavic Languages and Literatures</i>
Larry E. Davis	<i>Social Work</i>
Rafael J. Engel	<i>Social Work</i>
Katie Greeno	<i>Social Work</i>
Lambert Maguire	<i>Social Work</i>
Helen Petracchi	<i>Social Work</i>
Esther Sales	<i>Social Work</i>

Edward W. Sites	<i>Social Work</i>
Tracy M. Soska	<i>Social Work</i>
Hide Yamatani	<i>Social Work</i>
Kathleen M. Blee	<i>Sociology</i>
Lisa D. Brush	<i>Sociology</i>
Patrick Doreian	<i>Sociology</i>
Akiko Hashimoto	<i>Sociology</i>
James D. Luketich	<i>Surgery</i>
Ron Shapiro	<i>Surgery</i>
Attilio Favorini	<i>Theatre Arts</i>
William I. Brustein	<i>University Center for International Studies</i>
Wolfgang Schloer	<i>University Center for International Studies</i>
Ronald B. Herberman	<i>University of Pittsburgh Cancer Institute</i>
Carolyn J. Carson	<i>Urban Studies Program</i>
Guido K. Frank	<i>Western Psychiatric Institute and Clinic</i>



PROJECTS*

Pennsylvania Boards Diversity

PI: Ralph Bangs, URA, UCSUR

Funders: Maurice Falk Medical Fund, Women's Way

Period: 09/05-04/06

Determine the race and gender of appointed members of Pennsylvania State boards and commissions and determine the functions of the boards and types of payments to board members.

Pittsburgh Regional Analysis

PIs: Ralph Bangs, URA, UCSUR

Christopher Briem, URA, UCSUR

Funder: Pittsburgh Regional Alliance

Period: Ongoing

Regional impact studies of industries and firms. Assessment of investments on cost-benefit basis.

Access International Education Survey

PIs: Scott Beach, SRP, UCSUR

Wolfgang Schloer, UCIS

Funder: National Security Education Program

Period: 01/04-12/04

Web-based survey of U.S. colleges and universities regarding international education programs.

A National Study on the Future of Librarians in the Workforce

PIs: Scott Beach, SRP, UCSUR

Jose Marie-Griffiths, University of North Carolina-Chapel Hill

Donald King, University of North Carolina-Chapel Hill

Funder: Institute of Museum and Library Services

Period: 10/04-9/06

Web-based surveys of all public and academic libraries and samples of 6,000 school and special libraries (27,000 total surveys) focusing on staffing, budget, and other workforce issues.

Annual National Association of Neuroscience Departments and Programs Web Survey

PIs: Scott Beach, SRP, UCSUR

Ed Stricker, Neuroscience

Funder: Assn of Neuroscience Departments and Programs

Period: 08/02-06/05

Annual National Association of Neuroscience Departments and Programs (ANDP) web survey of neuroscience departments, focused on faculty, student, and curriculum characteristics.

Biometric Survey: National Pilot Testing

PIs: Scott Beach, SRP, UCSUR

Lisa S. Nelson, GSPIA

Funder: National Science Foundation

Period: 2/04-1/05

National telephone survey to pilot test a survey instrument focusing on the general public's perception regarding biometric technology and its use by government agencies.

Children of Bipolar Parents: A High Risk Follow-Up Study

PIs: Scott Beach, SRP, UCSUR

Boris Birmaher, Psychiatry

Funder: National Institutes of Health

Period: 04/01-03/06

Recruitment of community control families for comparison to families with parents with bipolar disorder. The major outcome is the psychopathological and functional status of children and adolescents.

Cognitive Impairment Related to Anastrozole Use in Women

PIs: Scott Beach, SRP, UCSUR

Catherine Bender, School of Nursing

Funder: National Institutes of Health

Period: 5/05-4/06

UCSUR is assisting in the recruitment of healthy women between the ages of 18 and 65 suitable for intensive follow-up in a study of the effects of anastrozole on cognitive function.

***In alphabetical order by UCSUR PI**

Communication and Barriers to Care in Veterans with Hepatitis C

PIs: Scott Beach, SRP, UCSUR

Susan Zickmund, VA Pittsburgh Healthcare System

Funder: Steven Manners Faculty Development Award

Period: 7/01–6/05

UCSUR is conducting telephone interviews focusing on relationships and interactions with health care providers with veterans receiving and not receiving treatment for hepatitis C.

Community Care Behavioral Health (CCBH) Patient Satisfaction Surveys

PIs: Scott Beach, SRP, UCSUR

Janet Schlarb, SRP, UCSUR

James Schuster, CCBH

Funder: Community Care Behavioral Health

Period: 07/01-06/05

Mail survey with telephone follow-up of medical assistance patient satisfaction with behavioral health treatment in Allegheny, Berks, York, and Adams counties.

Community Service Database Project

PIs: Scott Beach, SRP, UCSUR

Stephen Zupcic, Community/Govt Relations

John Wilds, Community/Govt Relations

Funder: Office of the Provost

Period: 07/01-12/05

Assist Office of the Provost in the development of a searchable database with information about faculty community service activities.

Data Sensitivity Survey: National Pilot Testing

PIs: Scott Beach, SRP, UCSUR

Lisa Nelson, GSPIA

Funder: West Virginia University

Period: 6/04–9/04

National telephone survey to pilot test a survey instrument focusing on the general public's perception regarding issues of private personal data and its use by government agencies.

Family and Peer Risk Factors for Pre-Adolescent Drinking Screening Survey

PIs: Scott Beach, SRP, UCSUR

John Donovan, Psychiatry

Funder: National Institute on Alcohol Abuse and Alcoholism

Period: 04/00-03/05

UCSUR is assisting the Department of Psychiatry in a telephone survey to identify families with 8-10 year olds suitable for intensive interviewing regarding risk factors for early alcohol use.

Frequent Hemodialysis Network Quality of Life Core

PIs: Scott Beach, SRP, UCSUR

Mark Unruh, School of Medicine

Funder: National Institutes of Health

Period: 9/04–8/08

UCSUR is conducting quality of life interviews as part of a multi-site, randomized clinical trial comparing different methods of delivery of hemodialysis to end stage renal disease patients.

Hormone and Ovarian Cancer Prediction

PIs: Scott Beach, SRP, UCSUR

Roberta Ness, Epidemiology

Funder: National Institutes of Health

Period: 05/03-04/08

Recruitment of community control females between the ages 45-75 for a study of ovarian cancer.

Impact Study

PIs: Scott Beach, SRP, UCSUR

David Brent, Psychiatry

Funder: National Institute of Mental Health

Period: 08/02-07/07

Recruitment of community control families for comparison to families with a parent who committed suicide or died suddenly.

PROJECTS . . . CONTINUED

National Study of Users and Potential Users of Online Information

PIs: Scott Beach, SRP, UCSUR

Jose-Marie Griffiths, University of North Carolina-Chapel Hill

Donald King, University of North Carolina-Chapel Hill

Funder: Institute of Museum and Library Services

Period: 10/03-09/05

National telephone household survey focusing on a variety of issues related to needs for and use of online information.

Pennsylvania Pharmacist Survey

PIs: Scott Beach, SRP, UCSUR

Denise Sokos, School of Pharmacy

Timothy George, School of Pharmacy

Funder: School of Pharmacy

Period: 7/04-6/05

UCSUR assisted the School of Pharmacy with a mailed survey to independent pharmacists regarding their opinions about a new Pennsylvania law allowing them to administer immunizations.

Peripheral Blood Stem Cells vs. Marrow Donor Quality of Life Surveys

PIs: Scott Beach, SRP, UCSUR

Galen Switzer, Medicine

Mary Amanda Dew, Psychiatry

Funder: National Marrow Donor Program

Period: 01/04-12/07

A series of telephone follow-up surveys focusing on quality of life issues as part of a randomized clinical trial comparing peripheral blood stem cell vs. bone marrow donation.

Political Culture Survey

PIs: Scott Beach, SRP, UCSUR

David Barker, Political Science Department

Chris Carman Political Science Department

Funder: Political Science Department

Period: 9/04-2/05

UCSUR assisted with a national web survey in nine major metropolitan areas in the United States (using a national web panel), focused on issues surrounding political ideology and culture.

Scaling Up Mathematics Project

PIs: Scott Beach, SRP, UCSUR

Mary Kay Stein, LRDC

Funder: National Science Foundation

Period: 1/05-12/06

UCSUR assisted LRDC in the conduct of surveys of elementary school mathematics teachers in Phoenix, AZ and New York, NY focusing on issues related to curriculum and teaching environment.

School of Information Science Alumni and Student Surveys

PIs: Scott Beach, SRP, UCSUR

Susan Alman, School of Information Sciences

Funder: School of Information Sciences

Period: 3/05-10/05

UCSUR assisted the School of Information Sciences with web-based surveys of alumni and current students focusing on issues related to the quality of education received and impact on job placement and satisfaction.

Study of Writing in the Undergraduate Curriculum, University of Pittsburgh

PIs: Scott Beach, SRP, UCSUR

David Bartholomae, English Department

Elizabeth Matway, English Department

Funder: Office of the Provost, English Department

Period: 7/01-6/05

UCSUR conducted a web-based survey of a representative sample of University of Pittsburgh undergraduates focusing on their experiences with writing as a part of their undergraduate education.

**Survey of the Pittsburgh Cluster of Suppliers
to the Steel Industry**

PIs: Scott Beach, SRP, UCSUR

Frank Giarratani, Economics Department

Carey Treado, Economics Department

Funder: Center for Industry Studies, Economics Department

Period: 10/01–3/05

UCSUR assisted the Department of Economics with a web-based survey of local steel supplier firms regarding their ties to the Pittsburgh region.

Veterans Aging Cohort Study

PIs: Scott Beach, SRP, UCSUR

Janet Schlarb, SRP, UCSUR

Amy Justice, Yale University

*Funder: National Institute on Alcohol Abuse
and Alcoholism*

Period: 10/01-09/06

Telephone interviews with HIV+ and HIV- veterans to explore the role of alcohol use in adherence to medication treatment.

WPTS-Radio Student Listener Survey

PIs: Scott Beach, SRP, UCSUR

Greg Weston, WPTS-Radio

Funder: Office of the Provost

Period: 2/05–5/05

Telephone survey of University of Pittsburgh undergraduates regarding their awareness of student radio station WPTS and listening habits.

Youth Works Telephone Survey

PIs: Scott Beach, SRP, UCSUR

Anne Farber, Office of Child Development

Funder: Office of Child Development

Period: 2/05–6/05

Telephone surveys of former participants of the Youth Works jobs program for adolescents focusing on their education, career plans, and employment history.

**A Demonstration of the Interactive, Intelligent,
Spatial Information System (IISIS), with Additional
Modules of Decision Support**

PIs: Louise Comfort, EDS, UCSUR

Panos Chrysanthis, Computer Science

Funder: Mountaintop Technologies, Inc.

Period: 06/05-12/05

Demonstrate the capacity of the prototype IISIS, using a range of relevant modules, to provide integrated decision support to practicing managers operating in regions exposed to risk. The IISIS prototype provides real-time decision support to enable practicing managers at different locations to make timely, informed decisions to protect their communities.

**Modeling Fragility of Sociotechnical Systems:
A Transportation Study**

PIs: Louise Comfort, EDS, UCSUR

Milos Hauskrecht, Computer Science

Jeen-Shang Lin, Engineering

Funder: National Science Foundation

Period: 02/04-07/05

Study to design and develop an improved set of interdisciplinary models to address the complex problem of disruption of a selected transportation system.

PROJECTS . . . CONTINUED

**PNC Park Exercise, IISIS/DMIS Demonstration,
City of Pittsburgh**

*PIs: Louise Comfort, EDS, UCSUR
Panos Chrysanthis, Computer Science
Funder: Mountaintop Technologies, Inc.
Period: 07/04-01/05*

Collaborative effort with Mountaintop Technologies to participate in the PNC Park Exercise to conduct an Interactive, Intelligent, Spatial Information System (IISIS) / Disaster Management Information System (DMIS) demonstration for the City of Pittsburgh.

**Secure CITI: Secure Critical Information
Technology Infrastructure**

*PIs: Louise Comfort, EDS, UCSUR
Daniel Mosse, Computer Science
Rami Melhem, Computer Science
Funder: National Science Foundation
Period: 09/03-09/08*

Collaborative effort with Carnegie Mellon University, George Washington University, and the University of California-Berkeley to support research to develop a program to address inter-organizational coordination in extreme events.

Allegheny County Comprehensive Plan

*PI: Sabina Deitrick, URA, UCSUR
Funder: McCormick Taylor (from Allegheny County Department
of Economic Development)
Period: 04/05-12/06*

Preparing demographic, housing, and economic baseline studies and forecasts for the Allegheny County Comprehensive Plan.

**Neighborhood and Community Database and Website
for Pittsburgh and Allegheny County**

*PI: Sabina Deitrick, URA, UCSUR
Funder: PNC Foundation
Period: 07/03-12/04*

Enhance and expand access to data and information to help Pittsburgh and Allegheny County residents, organizations, and governments improve their communities.

Pittsburgh Cancer Institute Regional Impact Analysis

*PI: Sabina Deitrick, URA, UCSUR;
Funder: University of Pittsburgh Cancer Institute
Period: 06/04-05/05*

Estimate the impact of the University of Pittsburgh Cancer Institute on the regional economy using the REMI Model.

**Women in the Workforce Project:
Analyzing Pittsburgh Gender Earnings Gap**

*PIs: Sabina Deitrick, URA, UCSUR
Susan Hansen, Political Science
Funder: Heinz Endowments
Period: 04/05-03/06*

Analyzing explanations for the gender wage gap in the Pittsburgh Metropolitan Area compared to the largest 100 MSAs in the nation.

GIS Mapping for PA Cleanways

*PI: Stephen Farber, EDS, UCSUR
Funder: PA Cleanways
Period: 01/05-05/05*

Provide GIS mapping services for illegal dumping sites in Pennsylvania.

**Conceptual Issues in the Dissemination
and Reception of Genomics**

*PIs: Paul Griffiths, History and Philosophy of Science
Karola Stotz, History and Philosophy of Science
Funder: National Science Foundation
Period: 09/03-08/04*

Collaborative research with ESRC Center for Genomics in Society at the University of Exeter, UK on the interaction between conceptualizations of genetic elements in contemporary genomic research, as examined in previous research by the PIs, and the process by which the results of genomics are disseminated to wide audiences.

<p>Evaluating the Nature of Alzheimer's Communication Triads (ENACT) <i>PIs: Jennifer Hagerty Lingler, Gerontology, UCSUR Richard Schulz, Gerontology, UCSUR Funder: University of Pittsburgh Institute for Doctor-Patient Communication Period: 02/05-01/06</i></p>	<p>Characterize the process and correlates of interpersonal communication among patients with Alzheimer's disease, their family caregivers, and primary care providers.</p>
<p>Arthritis Education Project <i>PI: Lynn Martire, Gerontology, UCSUR Funder: National Heart, Lung, and Blood Institute Period: 09/99-09/04</i></p>	<p>Study to assess the efficacy of an educational intervention for older osteoarthritis patients and their spousal caregivers.</p>
<p>Relationships in Late-Life Mood Disorder Project (RELATE) <i>PIs: Lynn Martire, Gerontology, UCSUR Richard Schulz, Gerontology, UCSUR Funder: National Institute of Mental Health Period: 12/02-11/07</i></p>	<p>The aims of this research are to: (1) examine the effects of patient adherence and depression recurrence during maintenance treatment on caregiver attitudes, burden, and psychiatric symptomatology; (2) examine the effects of caregiver factors on treatment adherence and depression recurrence in late-life patients; and (3) evaluate the feasibility and efficacy of a psychoeducational intervention for adult child caregivers to older depressed adults.</p>
<p>Self Care: Comparison of African Americans and Whites <i>PIs: Donald Musa, SRP, UCSUR Myrna Silverman, Graduate School of Public Health Funder: National Institute on Aging Period: 09/00-08/06</i></p>	<p>Study of self-care behaviors and their stability or change over time among older black and white adults with chronic disease.</p>
<p>Journal of Intergenerational Relationships: Programs, Policy and Research (Revised Title of IPQJ) <i>PI: Sally Newman, UCSUR Funder: Office of the Provost for Research Period: 01/04-12/04</i></p>	<p>Support for editorial assistance related to the preparation of the international quarterly, Journal of Intergenerational Relationships: Programs, Policy and Research, published by the Haworth Press.</p>
<p>Psychosocial Health and Facial Nerve Disorder <i>PI: Karen Schmidt, Gerontology, UCSUR Funder: National Institutes of Health Period: 07/03-06/08</i></p>	<p>Investigate symptoms of depression and anxiety and psychosocial health in general in patients with facial paralysis or movement disorder caused by disorders of the facial nerve.</p>
<p>Ageing Well, Sleeping Efficiently: Intervention Studies, Project 2 <i>PIs: Richard Schulz, Gerontology, UCSUR Martica Hall, Psychiatry Timothy Monk, Psychiatry Funder: National Institute on Aging Period: 12/02-11/07</i></p>	<p>This project is concerned with spousal caregivers age 65 and over of early Alzheimer's disease patients and an intervention designed to enhance their sleep and reduce the stress of caregiving.</p>

PROJECTS . . . CONTINUED

Cancer and Aging Center

*PIs: Richard Schulz, Gerontology, UCSUR
Ronald B. Herberman, University of Pittsburgh
Cancer Institute*

Funder: National Institutes of Health

Period: 09/03-08/08

Focus on the psychosocial impact of cancer on patients and families as well as psychobiological processes that mediate response to the stresses of cancer.

Caregiver Intervention for Caregivers of Spinal Cord Injury Patients

*PIs: Richard Schulz, Gerontology, UCSUR
Lynn Martire, Gerontology, UCSUR*

Funder: National Institute of Nursing Research

Period: 09/02-05/07

Test the efficacy of an innovative multi-component psychosocial/technology intervention aimed at reducing the risk for adverse health outcomes among family caregivers of older survivors with spinal cord injury.

Center of Excellence in Partnerships for Community Outreach: Research and Training Project EXPORT

*PIs: Richard Schulz, Gerontology, UCSUR
Stephen Thomas, Graduate School of Public Health*

Funder: National Center on Minority Health

and Health Disparities

Period: 09/02-09/07

Project EXPORT will utilize multiple strategies to enhance the impact of ongoing research to address health disparities and facilitate the involvement of African Americans in health promotion and disease prevention research and interventions.

Family Relationships in Late Life

*PIs: Richard Schulz, Gerontology, UCSUR
Gail Williamson, University of Georgia*

Funder: National Institute on Aging

Period: 09/02-07/07

Study the circumstances under which the distress of the caregiver leads to abuse or neglect of the care recipient.

Geriatric Education Center of Pennsylvania

*PI: Richard Schulz, Gerontology, UCSUR
Funder: Health Resources and Services Administration*

Period: 07/02--06/07

The Geriatric Education Center of Pennsylvania (GEC/PA) is a consortium of The University of Pittsburgh, Penn State University, and Temple University. The mission of the GEC/PA is to provide various educational programs to healthcare professionals in the areas of elder care issues.

Pittsburgh Claude D. Pepper Older Americans Independence Center

*PIs: Richard Schulz, Gerontology, UCSUR
Stephanie Studenski, Medicine*

Funder: National Institute on Aging

Period: 09/04-05/09

Develop interventions to improve function and independence in older adults with balance disorders, integrate studies of physiologic, biomechanical and psychosocial mechanisms affecting balance with clinical studies, and foster multi-disciplinary research and research training.

Psychiatric and Physical Health Effects of Caregiving

*PI: Richard Schulz, Gerontology, UCSUR
Funder: National Institute of Mental Health*

Period: 06/97-05/05

Assess, both short- and long-term, the physical and psychiatric health effects of spousal caregiving in a population-based sample of elderly persons age 65 and over.

**REACH Coordinating Center for
Caregiver Intervention Trial**
PI: Richard Schulz, Gerontology, UCSUR
Funders: National Institute on Aging
Period: 09/02-08/06

Coordinating Center for Enhancing Alzheimer's Disease and Related Disorders (ADRD) Caregiving. The goal of this cooperative agreement is to establish a coordinating center for intervention studies designed to enhance family caregiving for ADRD.

Religious/Spirituality, Health, and Health Services
PIs: Richard Schulz, Gerontology, UCSUR
Randy Hebert, Medicine
Funder: Alzheimer's Association
Period: 09/04-08/06

Update literatures relevant to religion, caregiving, and bereavement; write comprehensive literature reviews in this area; anticipate new hypotheses to emerge in the course of this project that will lead to additional analytic work and empirical papers.

**The Advanced Center for Intervention and Services
Research, Research Methods Core**
PIs: Richard Schulz, Gerontology, UCSUR
Lynn Martire, Gerontology, UCSUR
Charles F. Reynolds III, Psychiatry
Funder: National Institute of Mental Health
Period: 04/05-04/10

Focus on the social, psychological, and behavioral factors relevant to understanding the interactive nature of physical illness and depression in late life.

**Data Management and Statistical Resources Core:
Pittsburgh Mind Body Center II**
PIs: Richard Schulz, Gerontology, UCSUR
Karen Matthews, Psychiatry
Funder: National Heart, Lung and Blood Institute
Period: 09/04-08/09

Provide a data management infrastructure and statistical support to Pittsburgh Mind Body Center investigators.

**Language Processing Technology for
Electronic Rulemaking**
PI: Stuart W. Shulman, QDAP, UCSUR
Funder: National Science Foundation
Period: 11/04-10/08

Focus on the impact and development of new language technologies tailored to the electronic rulemaking tasks of the federal government.

Digital Citizenship
PI: Stuart W. Shulman, QDAP, UCSUR
Funder: National Science Foundation
Period: 11/04-10/05

Focus on the efficacy of service-learning as a bridge to the digital divide.

Comprehension Impairment
PI: Connie Tompkins, Gerontology, UCSUR
Funder: National Institutes of Health
Period: 09/99-11/06

This project is designed to contrast "suppression deficit" and "inference failure" hypotheses as factors in poor comprehension performance, and to gauge the attentional demands of suppression function.

PUBLICATIONS 2004 - 2005

Deitrick, S., & Ellis, C. (2004). New urbanism in the inner city: A case study of Pittsburgh, Pennsylvania. *Journal of the American Planning Association*, 70(4), 426-442.

Deleyiannis, F.W.B., Askari, M., Schmidt, K.L., VanSwearingen, J.M., & Manders, E. (2005). Muscle activity in the partially paralyzed face after placement of a fascial sling: A preliminary report. *Annals of Plastic Surgery*, 55(5), 449-455.

Diez Roux, A. V., Borrell, L. N., Haan, M., Jackson, S. A., & Schulz, R. (2004). Neighborhood environments and mortality in an elderly cohort: Results from the Cardiovascular Health Study. *Journal of Epidemiology and Community Health*, 58, 917-923.

Doyle, P. J., McNeil, M. R., Mikolic, J. M., Prieto, L., Hula, W. D., Lustig, A. P., Ross, K., Wambaugh, J. L., Gonzalez-Rothi, L. J., & Elman, R. J. (2004). The Burden of Stroke Scale (BOSS) provides valid and reliable score estimates of functioning and well-being in stroke survivors with and without communication disorders. *Journal of Clinical Epidemiology*, 57(10), 997-1007.

Duquin, M., McCrear, J. M., Fetterman, D., & Nash, S. (2005). A faith-based intergenerational health and wellness program. *Intergenerational Relationships*. Binghamton, NY: The Hawthorn Press, Inc.

Fassbinder, W., & Tompkins, C.A. (in press). Hemispheric differences in word meaning processing: Alternative interpretations of current evidence. *Aphasiology*.

Fultz, S. L., McGinnis, K. A., Skanderson, M., Ragni, M. V., & Justice, A.C. (2004). Association of thrombosis with HIV and survival: A comparison of HIV positive and negative veterans. *American Journal of Medicine*, 116(6), 420-423.

Goulet, J.L., Fultz, S.L., McGinnis, K.A., & Justice, A.C. (in press). Relative prevalence of co-morbidities and treatment contraindications in HIV-mono-infected and in HIV/HCV-co-infected veterans. *AIDS*.

Greenberg, M. S., & Beach, S. R. (2004). Property crime victims' decision to notify the police: Social, cognitive, and affective determinants. *Law and Human Behavior*, 28, 177-186.

Hebert, R. S., Dang, Q., & Schulz, R. (in press). Preparedness for the death of a loved one and mental health in bereaved caregivers of dementia patients: Findings from the REACH study. *Journal of Palliative Medicine*.

Im, K.A., Belle, S. H., Schulz, R., Mendelsohn, A. B., & Chelluri, L. (2004). Prevalence and outcomes of caregiving after prolonged (> 48 hours) mechanical ventilation (MV) in the intensive care unit (ICU). *CHEST*, 125, 597-606.

Justice, A. C., McGinnis, K. A., Atkinson, J. H., Heaton, R., Young, C., Sadek, J., Madenwald, T., Becker, J. T., Conigliaro, J., Brown, S. T., Rimland, D., Crystal, S. & Simberkoff, M. for the VACS 5 Project Team. (2004). Psychiatric and neurocognitive disorders among HIV-positive and negative veterans in care: Veterans Aging Cohort 5 Site Study. *AIDS*, 18(Suppl 1), S49-S59.

Lenze, E. J., Mulsant, B. H., Mohlman, J., Shear, M. K., Dew, M. A., Schulz, R., Miller, M. C., Tracey, B., & Reynolds, C. F. (2005). Generalized anxiety disorder in late life: Longitudinal course and comorbidity with major depressive disorder. *American Journal of Geriatric Psychiatry*, 13(1), 77-80.

JOURNALS

Beach, S. R., Schulz, R., Williamson, G. M., Miller, L. S., Weiner, M. F., & Lance, C. E. (2005). Risk factors for potentially harmful caregiver behavior. *Journal of the American Geriatrics Society*, 53, 255-261.

Beisser, S., Shulman, S. W., & Larson, T. (2005). Closing the digital divide with service learning. *Academic Exchange Quarterly*, 9(1), 31-35.

Beisser, S., Shulman, S. W., & Larsen, T. (2005). Empowerment through service-learning: Teaching technology to senior citizens. *The Innovation Journal*, 10(1).

Belle, S., Zhang, S., Czaja, S., Burns, R., & Schulz, R. (2004). Use of cognitive enhancement medication in persons with Alzheimer's Disease who have a family caregiver: Results from the Resources for Enhancing Alzheimer's Caregiver Health (REACH) project. *American Journal of Geriatric Psychiatry*, 12(3), 250-257.

Boerner, K., Schulz, R. & Horowitz, A. (2004). Positive aspects of caregiving and adaptation to bereavement. *Psychology and Aging*, 19(4), 668-675.

Bookwala, J., Zdaniuk, B., Burton, L., Lind, B., Jackson, S., & Schulz, R. (2004). Concurrent and long-term predictors of older adults' use of community-based long-term care services. *Journal of Aging and Health*, 16(1), 88-115.

Braithwaite, R.S., McGinnis, K.A., Conigliaro, J., Maisto, S.A., Crystal, S., Day, N., Cook, R.L., Gordon, A., Bridges, M., Seiler, J.F.S., & Justice, A.C. (2005). A temporal and dose-response association between alcohol consumption and medication adherence among veterans in care. *Alcoholism: Clinical and Experimental Research*, 29(7), 1190-1197.

Chelluri, L., Im, K. A., Belle, S. H., Schulz, R., Rotondi, A. J., Donahoe, M. P., Sirio, C. A., Mendelsohn, A.B., & Pinsky, M. R. (2004). Long-term mortality and quality of life after prolonged mechanical ventilation. *Critical Care Medicine*, 32(1), 61-69.

Cohn, J. F., & Schmidt, K. L. (2004). The timing of facial motion in posed and spontaneous smiles. *International Journal of Wavelets, Multiresolution and Information Processing*, 2, 1-12.

Comfort, L.K. (2005). Risk, security and disaster management. *Annual Review of Political Science*, 8, 335-356.

Comfort, L.K, Dunn, M., Johnson, D., Zagorecki, A., & Skertich, R. (2004). Coordination in complex systems: Increasing efficiency in disaster mitigation and response. *International Journal of Emergency Management*, 2(1-2), 62-80.

Comfort, L.K., & Kapucu, N. (in press). Inter-organizational coordination in extreme events: The World Trade Center attacks, September 11, 2001. *Natural Hazards*.

Comfort, L.K., Ko, K., & Zagorecki, A. (2004). Coordination in rapidly evolving systems: The role of information. (2004). *American Behavioral Scientist*, 48(3), 295-313.

Crothers, K., Griffith, T.A., & McGinnis, K.A. (in press). Rodriguez-Barradas MC, Leaf DA Weissman S, Gibert CL, Butt AA, Justice AC. The Impact of Cigarette Smoking on Mortality, Quality of Life and Comorbid Illness Among HIV Positive Veterans. *Journal of General Internal Medicine*.

PUBLICATIONS. . . CONTINUED

Lenze, E. J., Schulz, R., Martire, L. M., Zdaniuk, B., Glass, T., Kop, W. J., Jackson, S. A., & Reynolds III, C. F. (2005). The course of functional decline in persistently depressed elderly: Longitudinal findings from the Cardiovascular Health Study. *Journal of the American Geriatrics Society*, 53, 569-575.

Lin, C.J., Musa, D., Silverman, M., & Degenholtz, H. (2005). Do managed care plans reduce disparities in preventive care? *Journal of Health Care for the Poor and Underserved*, 16(1), 139-151.

Lingler, J. H. (2004). Ethical issues in distinguishing sexual activity from sexual maltreatment among women with dementia. *Journal of Elder Abuse and Neglect*, 15(2), 85-102.

Lingler, J., Martire, L. M., & Schulz, R. (2005). Caregiver-specific outcomes in anti-dementia clinical drug trials: A systematic review and meta-analysis. *Journal of the American Geriatrics Society*, 53, 983-990.

Lingler, J.H., Parker, L.S., Schulz, R., & DeKosky, S.T. (in press). Caregivers as subjects of clinical drug trials: a review of research ethics practices in published studies of Alzheimer's pharmacotherapies. *IRB: Ethics & Human Research*.

Martire, L.M. (2005). The "relative" efficacy of involving family in psychosocial interventions for chronic illness: are there added benefits to patients and family members? *Families, Systems & Health*, 23, 312-328.

Martire, L.M., Keefe, F.J., Schulz, R., Ready, R., Beach, S.R., Rudy, T.E., & Starz, T.W. (in press). Older spouses' perceptions of partners' chronic arthritis pain: implications for spousal responses, support provision, and caregiving experiences. *Psychology and Aging*.

Martire, L. M., Lustig, A. P., Schulz, R., Miller, G. E., & Helgeson, V. S. (2004). Is it beneficial to involve a family member? A meta-analytic review of psychosocial interventions for chronic illness. *Health Psychology*, 23(6), 599-611.

Martire, L. M., Schulz, R., Mulsant, B. H., & Reynolds III, C. F. (2004). Family caregiver functioning in late-life bipolar disorder. *American Journal of Geriatric Psychiatry*, 12(3), 335-336.

Matthews, J. T., Dunbar-Jacob, J., Sereika, S., Schulz, R., & McDowell, B. J., (2004). Preventive health practices: Comparison of family caregivers 50 and older. *Journal of Gerontological Nursing*, 30(2), 46-54.

Miller, M.D., Richards, M.V., Zuckoff, A., Martire, L.M., Morse, J.Q., Frank, E., & Reynolds III, C.F. (in press). Modifying interpersonal psychotherapy (IPT) for depressed elders with cognitive impairment. *Clinical Gerontologist*.

Mitrani, V.B., Lewis, J., Feaster, D.J., Czaja, S.J., Eisdorfer, C., Schulz, R., Szapocznik, J. (in press). The role of family functioning in the stress process of dementia caregivers: A structural family framework. *The Gerontologist*.

Newman, S. (Editor). (2004). *Journal of Intergenerational Relationships: Programs, Policy and Research*, Volume 2, Issues 1-4. Haworth Press, Inc.

Newman, S. (Editor). (2005). *Journal of Intergenerational Relationships: Programs, Policy and Research*, Volume 3, Issues 1-3. Haworth Press, Inc.

Newman, S., & Goff, R. (in press). International aspects of intergenerational caregiving. *International Caregiving*.

Norton, T. R., Gupta, A., Stephens, M. A. P., Martire, L. M., & Townsend, A. L. (2005). Stress, rewards, and change in the centrality of women's family and work roles: Mastery as a mediator. *Sex Roles: A Journal of Research*, 52, 325-335.

Ruiz, J. M., Matthews, K. A., Scheier, M. F., & Schulz, R. (in press). Does whom you marry matter for your health? Influence of patient's and spouse's personality on their partner's psychological well-being following coronary artery bypass surgery. *Journal of Personality and Social Psychology*.

Scheier, M.F., Helgeson, V.S., Schulz, R., Colvin, S., Berga., S., Bridges, M.W., Knapp, J., Gerszten, K., & Pappert, W.S. (2005). Interventions to enhance physical and psychological functioning among younger women who are ending nonhormonal adjuvant treatment for early stage breast cancer. *Journal of Clinical Oncology*, 23(19), 4298-4311.

Scheier, M. F., Wrosch, C., Cohen, S., Martire, L. M., Matthews, K. A., Schulz, R., & Zdaniuk, B. (in press). The Life Engagement Scale (LES): Assessing purpose in life. *Journal of Behavioral Medicine*.

Schmidt, K.L., VanSwearingen, J.M., & Levenstein, R.M. (2005). Speed, amplitude, and asymmetry of lip movement in voluntary puckering and blowing expressions: Implications for facial assessment. *Motor Control*, 9(3), 270-280.

Schulz, R. (2004). Promoting the caregiving of older American through technology: Opportunities and challenges. *National Academy on an Aging Society, Public Policy and Aging Report*, 14(1).

Schulz, R. (2004). The past and future of family caregiving research. *Contemporary Gerontology*, 10(4), 139-144.

Schulz, R. (2005). Effects of bereavement on family members: Examining the evidence of Alzheimer's disease caregivers. *ElderCare*, 5(3), 1-2.

Schulz, R., Guest Editor (2005). Dementia care and quality of life in assisted living and nursing homes. *The Gerontologist*, 45 (Special Issue 1).

Schulz, R., Belle, S. H., Czaja, S. J., McGinnis, K. A., Stevens, A., & Zhang, S. (2004). Long-term care placement of dementia patients and caregiver health and well-being. *Journal of the American Medical Association*, 292(8), 961-967.

Schulz, R., & Martire, L. M. (2004). Family caregivers in persons with dementia: Prevalence, health effects, and support strategies. *American Journal of Geriatric Psychiatry*, 12, 240-249.

Schulz, R., Martire, L., Klinger, J. (in press). Evidence-based caregiver interventions in geriatric psychiatry. *Psychiatry Clinics of North America*.

Schulz, R., & Patterson, T. (2004). Editorial. Caregiving in geriatric psychiatry. *American Journal of Geriatric Psychiatry*, 12(3), 234-237.

Schulz, R., Weiner, D., & Martire, L. M. (2004). End-of-life care for patients with dementia (correspondence). *New England Journal of Medicine*, 350, 733-734.

Sharma, R.K., McGinnis, K.A., & Documet, P.I. (in press). Disparity in health status and health utilization among Hispanic ethnic subgroups. *Journal of Health and Social Policy*.

PUBLICATIONS . . . CONTINUED

Shelley, M., Thrane, L., Shulman, S. W., Lang, E., Beisser, S., Larsen, T., & Mutiti, J. (2004). Digital citizenship: Parameters of the digital divide. *Social Science Computer Review*, 22(2), 256-269.

Shulman, S. W. (2005). eRulemaking: Issues in current research and practice. *International Journal of Public Administration*, 28, 1-21.

Shulman, S. W. (Winter 2004/2005). The Internet still might (but probably won't) change everything. *I/S Journal*, 1(1), 111-145.

Shulman, S. W., Callan, J., Hovy, E., & Zavestoski, S. (2004). SGER collaborative: A testbed for eRulemaking data. *Journal of E-Government*, 1(1).

Shulman, S. W., Katz, J., Quinn, C., & Srivastava, P. (2005). Empowering environmentally-burdened communities: An emerging role for information technology. *Local Environment*, 10(5), 1-13.

Simko, L.C., & McGinnis, K.A. (2005). What is the Perceived Quality of Life of Adults with Congenital Heart Disease and Does it Differ by Anomaly? *Journal of Cardiovascular Nursing*, 20(3), 206-214.

Simko, L.C., McGinnis, K.A., & Schembri, J. (in press). Educational Needs of Adults with Congenital Heart Disease. *Journal of Cardiovascular Nursing*.

Stephens, M.A.P., Martire, L.M., Cremeans-Smith, J.K., Druley, J.A., & Wojno, W.C. (in press). Older women with osteoarthritis and their caregiving husbands: effects of patients' pain and pain expression. *Rehabilitation Psychology*.

Thrane, L.E., Shelley, M. C., Shulman, S. W., Beisser, S., & Larsen, T. (2004). e-Political empowerment: Age effects or attitudinal barriers? *Journal of E-Government*, 1(4), 21-37.

Tompkins, C. A., Fassbinder, W., Blake, M. L., Baumgaertner, A., & Jayaram, N. (2004). Inference generation during text comprehension by adults with right hemisphere brain damage: Activation failure versus multiple activation. *Journal of Speech, Language, and Hearing Research*, 47, 1370-1385.

Tompkins, C. A., Fassbinder, W., & Scharp, V. L. (2004). Resources, aphasia, and the pursuit of theoretical precision. *Aphasiology*, 18, 843-846.

Tompkins, C.A., & Scharp, V.L. (in press). Communicative value of self-cues in aphasia: A re-evaluation. *Aphasiology*.

Williamson, G. M., Martin-Cook, K., Weiner, M.F., Svetlik, D.A., Saine, K., Hynan, L.S., Dooley, W.K., & Schulz, R. (2005). Caregiver resentment: Explaining why care recipients exhibit problem behavior. *Rehabilitation Psychology*, 50(3), 215-223.

Wrosch, C., Schulz, R., & Heckhausen, J. (2004). Health stresses and depressive symptomatology in the elderly: A control-process approach. *Current Directions*, 13(1), 17-20.

Zimmerman, S., Sloane, P. D., Heck, E., Maslow, K., & Schulz, R. (2005). Introduction: Dementia care and quality of life in assisted living and nursing homes. *The Gerontologist*, 45(Special Issue 1), 5-7.

BOOKS/BOOK CHAPTERS/OTHER PUBLICATIONS

- Comfort, L.K. (2005). Homeland security initiatives and emergency management in metro areas: The Pennsylvania perspective. In W.C. Nicholson (Ed.) *Homeland Security Law and Policy* (pp. 137-144). Springfield, IL: Charles C. Thomas Publishers.
- Comfort, L.K. (2004). Information technology and efficiency in disaster response: The Bhuj, Gujarat Earthquake of 26 January 2001. In P.L. Sanjeev Reddy, J. Singh, & R.K. Tiwari (Eds.). *Democracy, Governance, and Globalization: Essays in Honour of Paul H. Appleby* (pp. 229-250). Delhi, India: Indian Institute of Public Administration.
- Comfort, L.K., Dunn, M., Johnson, D., Skertich, R., & Zagorecki, A. (2004). Integrating real-time information into disaster management: The IISIS dashboard. In D. Malzahn & T. Plapp (Eds.). *Disasters and Society – From Hazard Assessment to Risk Reduction* (pp. 227-235). Berlin, Germany: Logos Verlag.
- Deitrick, S., & Dewar, M. (2004). Brownfields and community development. In R. Greenstein and Y. Sungu-Eryilmaz (Eds.). *Recycling the city: The use and reuse of urban land*. Cambridge, MA: Lincoln Institute of Land Policy.
- Deitrick, S., & Farber, S. (2005). Managing Brownfields as community assets (Chapter 8). In F. Wagner, T. Joder, A. Mumphrey, Jr., K. Akundi, & A. Artibise (Eds.). *Revitalizing the city: Strategies to contain sprawl and revive the core*. Armonk, NY: ME. Sharpe.
- Deitrick, S., & Soska, T. (2005). The University and the Oakland neighborhood: From conflict to cooperation, or how the 800 pound gorilla learned to sit with — and not on — its neighbors (Chapter 2). In D. Perry and W. Wiewel (Eds.). *The university as urban developer: Case studies and analysis*. Armonk, NY: M.E. Sharpe.
- Larkin, E., Friedlander, D., Newman, S., & Goff, R. (Eds.). (2005). *Intergenerational relationships: Conversations on practice and research across cultures*. Binghamton, NY: Haworth Press.
- Lingler, J.H. & Schulz, R. (in press). Do the benefits of anti-dementia drugs extend to family caregivers? In Bellas, V. (Ed.), *Research and Practice in Alzheimer's Disease and Cognitive Decline, Volume 9*. Paris, France: SERDI Publisher.
- Newman, S., & Goff, R. (2005). *Intergenerational Relationships and Civic Engagement*. In L. B. Wilson, & S.P. Simson (Eds.). *Civic engagement and people age 50 and beyond, Volume I of community gerontology series*. Binghamton, NY: The Haworth Press.
- Schlosberg, D., Shulman, S. W., & Zavestoski, S. (in press). Virtual environmental citizenship: Web-based public participation on environmental rulemaking in the U.S. (207-236). In Dobson & Bell (Eds.). *Environmental Citizenship: Getting From Here to There*. Cambridge, MA: MIT Press.
- Shulman, S. W., Thrane, L., & Shelley, M. C. (2005). eRulemaking. In G. David Garson (Ed.). *The handbook of public information systems 2nd Edition* (237-254). Boca Raton, FL: CRC Press.
- Schulz, R. (Editor in Chief). (in press). *Encyclopedia of Aging, 4th Edition*. NY: Springer.
- Steering Committee for the Workshop on Adaptive Aging: From Technology to Gerontology (Pew, R. W. [Ed], Bass, S. A., Coughlin, J. F., Hardy, M. A., Kramer, A. F., Pollack, M. E., Rogers, W. A., Schulz, R., Scialfa, C. T., Sheridan, T. B., Van Hemel, S. B. [Ed.], & Martinez, J. G.). (2004). *Technology for Adaptive Aging*. Washington, DC: The National Academies Press.

PUBLICATIONS . . . CONTINUED

Thrane, L., Shulman, S. W., Shelley, M. Beisser, S., & Larsen, T. (2005). Does computer training translate to e-political empowerment among midwestern senior citizens? (159-173). In B. Jaeger (Ed.). *Young technologies in old hands—An international view on senior citizens' utilization of ICT*. Copenhagen, Denmark: DJØF Publishing.

Tompkins, C. A., & Fassbinder, W. (2004). Right hemisphere language disorders. In R. Kent (Ed.), *The MIT Encyclopedia of Communication Sciences and Disorders* (pp. 388-392). Cambridge, MA: MIT Press.

Tompkins, C.A., & Scharp, V.L. (in press). Aphasia. In R. Schulz (Ed.). *Encyclopedia of Aging*, 4th Edition. New York: Springer.

Tompkins, C.A., & Scharp, V.L. (in press). Hemispheric specialization. In R. Schulz (Ed.). *Encyclopedia of Aging*, 4th Edition. New York: Springer.

Tompkins, C.A., Scharp, V.L., & Meigh, K.M. (in press). Communication disorders. In R. Schulz (Ed.). *Encyclopedia of Aging*, 4th Edition. New York: Springer.

TECHNICAL REPORTS

Argueta, J., & Bangs, R. (2004). *Disabilities in Southwestern Pennsylvania*. University of Pittsburgh, Center for Social and Urban Research.

Bangs, R., Anthou, C., Hughes, S., & Short, C. (2004). *Black-White benchmarks report*. University of Pittsburgh, Center for Social and Urban Research.

Bangs, R., Lichtenwalter, S., Hughes, S., Anthou, C., & Short, C. (2004). *Women's benchmarks report*. University of Pittsburgh, Center for Social and Urban Research.

Beach, S. & Musa, D. (2004). *2004 Undergraduate Student Satisfaction Survey: Data Addendum Examining Education Items*. University of Pittsburgh, Center for Social and Urban Research.

Beach, S., Musa, D., & Schlarb, J. (2004). *Weed and Seed Evaluation Project in Hazelwood, East Liberty, and Homewood: Results of resident survey*. University of Pittsburgh, Center for Social and Urban Research.

Beach, S., & Schlarb, J. (2005). *Community Care Behavioral Health 2004 member satisfaction survey (Allegheny County): Report of Findings*. University of Pittsburgh, Center for Social and Urban Research.

Beach, S., & Schlarb, J. (2005). *Community Care Behavioral Health 2004 member satisfaction survey (Berks County): Report of Findings*. University of Pittsburgh, Center for Social and Urban Research.

Beach, S., & Schlarb, J. (2005). *Community Care Behavioral Health 2004 member satisfaction survey (Chester County): Report of Findings*. University of Pittsburgh, Center for Social and Urban Research.

Beach, S., & Schlarb, J. (2005). *Community Care Behavioral Health 2004 member satisfaction survey (York and Adams counties): Report of Findings*. University of Pittsburgh, Center for Social and Urban Research.

Beach, S., & Schlarb, J. (2004). *Community Care Behavioral Health 2003 Allegheny County member satisfaction survey: Report of findings*. University of Pittsburgh, Center for Social and Urban Research.

Beach, S., & Schlarb, J. (2004). *Community Care Behavioral Health 2003 Berks County member satisfaction survey: Report of findings*. University of Pittsburgh, Center for Social and Urban Research.

Beach, S., & Schlarb, J. (2004). Community Care Behavioral Health 2003 York & Adams counties member satisfaction survey: Report of findings. University of Pittsburgh, Center for Social and Urban Research.

Musa, D. & Beach, S. (2004). 2004 Undergraduate Student Satisfaction Survey: Data Addendum Examining Racial Climate. University of Pittsburgh, Center for Social and Urban Research.

Musa, D. & Beach, S. (2004). 2004 Undergraduate Student Satisfaction Survey: Summary of Results and Trends Over Time. University of Pittsburgh, Center for Social and Urban Research.

McCrea, J. M., Weissman, M. (2004). Intergenerational service-learning in gerontology: A faculty manual. Washington, DC: The Association for Gerontology in Higher Education.

McCrea, J. M., Weissman, M., Stepp, D., & Ciha, B. (Eds.) (2004). Intergenerational service-learning in gerontology: A Compendium, Volume IV: Reflection in service-learning: Practical guidance from multiple perspectives. Washington, DC: The Association for Gerontology in Higher Education.

McCrea, J. M., Weissman, M., & Thorpe-Bradley, G. (2004). Connecting the generations: A practical guide for developing intergenerational programs. University of Pittsburgh, Center for Social and Urban Research.

Schlarb, J., & Beach, S. (2005). Community Care Behavioral Health 2004 HealthChoices provider satisfaction survey (Allegheny County): Report of Findings. University of Pittsburgh, Center for Social and Urban Research.

Schlarb, J., & Beach, S. (2005). Community Care Behavioral Health 2004 HealthChoices provider satisfaction survey (Berks County): Report of Findings. University of Pittsburgh, Center for Social and Urban Research.

Schlarb, J., & Beach, S. (2005). Community Care Behavioral Health 2004 HealthChoices provider satisfaction survey (Chester County): Report of Findings. University of Pittsburgh, Center for Social and Urban Research.

Schlarb, J., & Beach, S. (2005). Community Care Behavioral Health 2004 HealthChoices provider satisfaction survey (York and Adams counties): Report of Findings. University of Pittsburgh, Center for Social and Urban Research.

Schlarb, J., & Beach, S. (2004). Community Care Behavioral Health 2003 HealthChoices Allegheny County provider satisfaction survey: Report of findings. University of Pittsburgh, Center for Social and Urban Research.

Schlarb, J., & Beach, S. (2004). Community Care Behavioral Health 2003 HealthChoices Berks County provider satisfaction survey: Report of findings. University of Pittsburgh, Center for Social and Urban Research.

Schlarb, J., & Beach, S. (2004). Community Care Behavioral Health 2003 HealthChoices York & Adams counties provider satisfaction survey: Report of findings. University of Pittsburgh, Center for Social and Urban Research.

Schlarb, J., & Beach, S. (2005). Community Care Behavioral Health 2004 UPMC Health Plan provider satisfaction survey: Report of Findings. University of Pittsburgh, Center for Social and Urban Research.

Schlarb, J., & Beach, S. (2004). Community Care Behavioral Health 2003 UPMC Health Plan provider satisfaction survey: Report of findings. University of Pittsburgh, Center for Social and Urban Research.

To learn more about UCSUR's survey research capabilities, programs, ongoing projects, and staff, visit our web site at:

<http://www.ucsur.pitt.edu>



University Center for Social and Urban Research

121 University Place

Pittsburgh, PA 15260

Telephone: 412-624-5442

Telefax: 412-624-4810

Email: ucsur@pitt.edu