

# EEO Employment Data by Occupation and Race for the Pittsburgh Region

University Center for Social and Urban Research

University of Pittsburgh

August 2020

## **About the University Center for Social and Urban Research (UCSUR)**

The University Center for Social and Urban Research (UCSUR) was established in 1972 to serve as a resource for researchers and educators interested in the basic and applied social and behavioral sciences. As a hub for interdisciplinary research and collaboration, UCSUR promotes a research agenda focused on the social, economic, and health issues most relevant to our society. UCSUR maintains a permanent research infrastructure available to faculty and the community with the capacity to: (1) conduct all types of survey research, including complex web surveys; (2) carry out regional econometric modeling; (3) analyze qualitative data using state-of-the-art computer methods, including web-based studies; (4) obtain, format, and analyze spatial data; (5) acquire, manage, and analyze large secondary and administrative data sets, including Census data; and (6) design and carry out descriptive, evaluation, and intervention studies. UCSUR plays a critical role in the development of new research projects through consultation with faculty investigators.

The long-term goals of UCSUR fall into three broad domains: (1) provide state-of-the-art research and support services for investigators interested in interdisciplinary research in the behavioral, social, and clinical sciences; (2) develop nationally recognized research programs within the Center in a few selected areas; and (3) support the teaching mission of the University through graduate student, post-doctoral, and junior faculty mentoring, teaching courses on research methods in the social sciences, and providing research internships to undergraduate and graduate students. Achieving these goals requires that we continually upgrade and improve the research infrastructure of the Center and that we recruit, develop, and maintain a core staff of investigators capable of being leaders in their fields.

## **About this Report**

This report was completed by UCSUR's Urban and Regional Analysis Program. Questions on the analysis can be directed to Christopher Briem at [cbriem@pitt.edu](mailto:cbriem@pitt.edu) or (412) 624-3791.

## Overview

This report compiles data from the most recent Equal Employment Opportunity (EEO) Tabulation periodically produced by the U.S. Census Bureau. This tabulation was sponsored by a consortium of federal agencies including the Equal Employment Opportunity Commission (EEOC), the U.S. Department of Labor (Office of Federal Contract Compliance Programs), the U.S. Department of Justice, and the Office of Personnel Management (OPM). This and previous tabulations serve as the primary external benchmark for comparing the race, ethnicity, and sex composition of an organization's internal workforce, and the analogous external labor market, within a specified geography and job category. This data is intended to also be used by organizations to develop and update their affirmative action plans. More information on the EEO Tabulation is available on the Census Bureau web page at: <https://www.census.gov/topics/employment/equal-employment-opportunity-tabulation.html>

Occupation data in the EEO Tabulation is based on the American Community Survey (ACS) 5-year estimates for the period 2006-2010. This is the most recent EEO Tabulation distributed by the U.S. Census Bureau. However, the Census Bureau has recently announced that it plans to release an updated EEO Tabulation in either the fall of 2020 or spring of 2021 using ACS 5-year estimates for the period 2014-2018. When new data becomes available, this report will be updated.

For comparison, additional labor force data is compiled from the Census Bureau's Quarterly Workforce Indicators (QWI), which are produced as part of the Local Employment Dynamics program. Unlike the sample-based ACS data, QWI data links employer payroll data with the characteristics of individual wage and salary workers. Note that the QWI and ACS use different methodologies, and capture slightly different workers which results in different specific estimates of regional employment data.

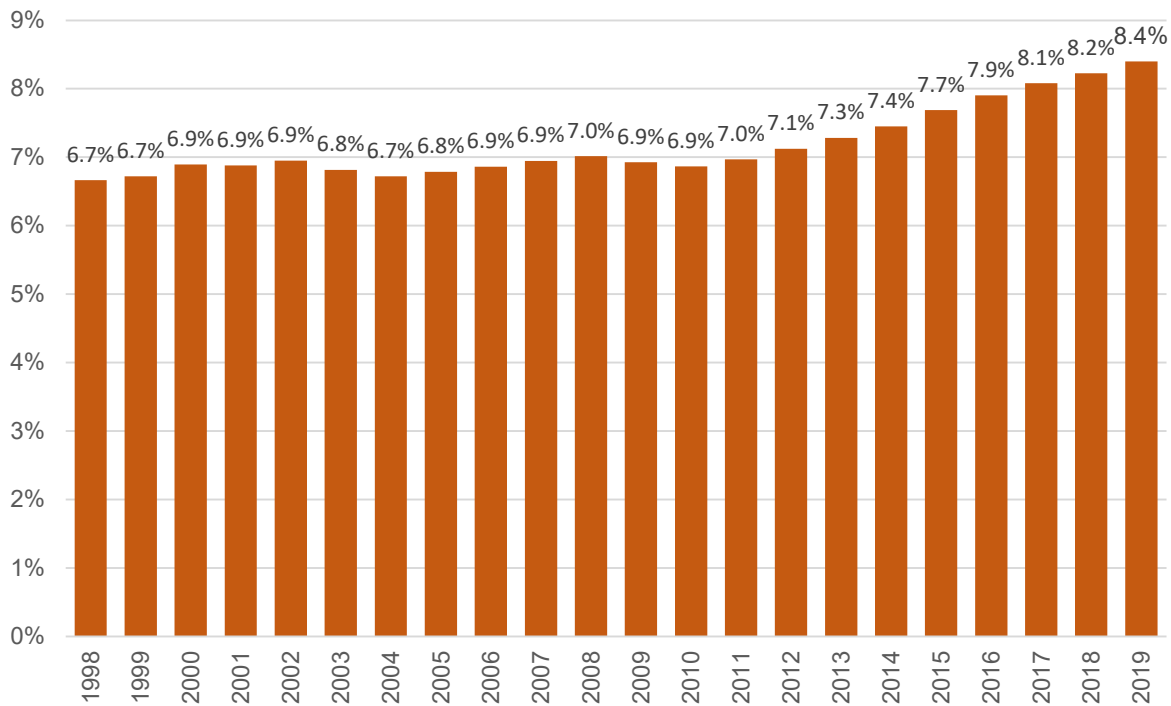
Employment data presented in this report focuses on employment by race and occupation for workers residing in the seven-county Pittsburgh Metropolitan Statistical Area (MSA) which is comprised of Allegheny, Armstrong, Beaver, Butler, Fayette, Washington and Westmoreland counties. The full EEO Tabulation includes additional compilations of employment by gender and ethnicity and separate compilations of similar employment data based on place of work.

Employment data for the Pittsburgh MSA was collapsed into a limited set of three race categories: (1) White-alone workers (which includes both White-Hispanic and White-not-Hispanic workers); (2) Black-alone workers; and (3) all other workers, including workers of all other races and multi-race workers. This report includes occupational employment patterns across 22 of the 23 major occupation groups and for 483 occupation categories based on the 2010 Standard Occupational Classification (SOC) System. The omitted occupation group is for military specific occupations, which includes only a limited number of workers in the Pittsburgh region. More information on the 2020 SOC is available at: [https://www.bls.gov/soc/2010/2010\\_major\\_groups.htm](https://www.bls.gov/soc/2010/2010_major_groups.htm)

## Black Workers in the Pittsburgh Region’s Labor Force

Annual data on the characteristics of the regional workers is available from Census Bureau’s Quarterly Workforce Indicators (QWI). QWI data show that between 2000 and 2010, Black-alone workers consistently made up just under 7% of all employed workers in the Pittsburgh region. However, since 2010 the proportion of Black-alone workers in the region has been steadily increasing. QWI data for the Pittsburgh region summarized in Figure 1 shows that the proportion of Black-alone workers in the Pittsburgh MSA increased from 6.9% in 2010 to 8.4% in 2019.

Figure 1. Black-Alone Workers as Percentage of All Workers  
Pittsburgh MSA, 1998-2019



Source: Quarterly Workforce Indicators (QWI)

The increasing proportion of Black workers in the Pittsburgh region is the result of an increase in the number of Black-alone workers and significantly slower growth for White-alone workers over the most recent decade. Table 1 summarizes the change in regional employment by race since 2000. Between 2010 and 2019, the number of Black-alone workers in the Pittsburgh MSA increased by 22,627, or an increase of 30.6%. Over this same period the total number of regional workers increased by just 6.7%, and the number of White-alone workers in their region increased by 3.1%. All other workers, which include workers of other races and multi-race workers, increased by 20,333, or an increase of just under 71% over the same period.

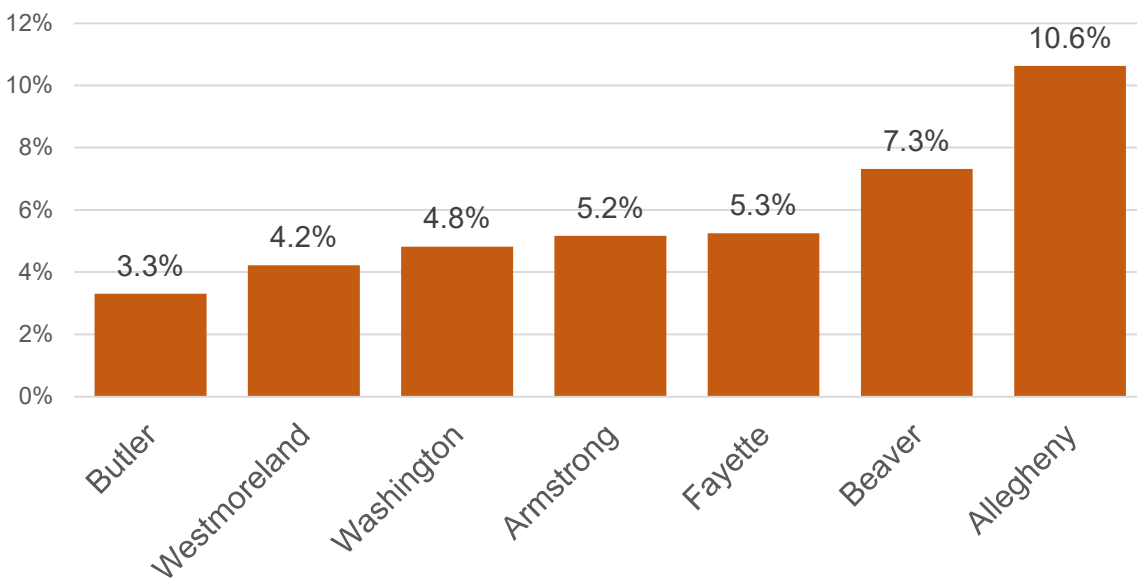
**Table 1. Pittsburgh MSA Workers by Race, 2000-2019**

	Total Workers	White-alone Workers	Black-alone Workers	All other Workers
2000	1,100,633	1,004,896	91.3%	75,851 6.9% 19,886 1.8%
2005	1,083,622	986,645	91.1%	73,532 6.8% 23,445 2.2%
2010	1,077,391	975,121	90.5%	73,970 6.9% 28,300 2.6%
2015	1,115,521	991,895	88.9%	85,754 7.7% 37,872 3.4%
2019	1,149,930	1,005,000	87.4%	96,597 8.4% 48,333 4.2%
Change	-23,242	-29,775	-1,881	8,414
2000-2010	-2.1%	-3.0%	-2.5%	+42.3%
Change	+72,539	+29,879	+22,627	+20,033
2010-2019	+6.7%	+3.1%	+30.6%	+70.8%

Source: Quarterly Workforce Indicators (QWI)

Black workers are not equally represented across subareas of the Pittsburgh region. Mirroring population demographics within the region, in 2019 just under 80% of Black workers in the Pittsburgh MSA resided in Allegheny County. For comparison, the Census Bureau (1-year) ACS estimates that in 2018, 82.7% of the Black-alone population in the Pittsburgh MSA lived within Allegheny County. Figure 2 shows the proportion of Black-alone workers among all workers across each of the counties in the Pittsburgh MSA. Among regional counties, the proportion of Black-alone workers by county ranges from 3.3% in Butler County to 10.6% in Allegheny County as of 2019.

**Figure 2. Black-Alone Workers as Percentage of All Workers  
Pittsburgh MSA Counties, 2019**

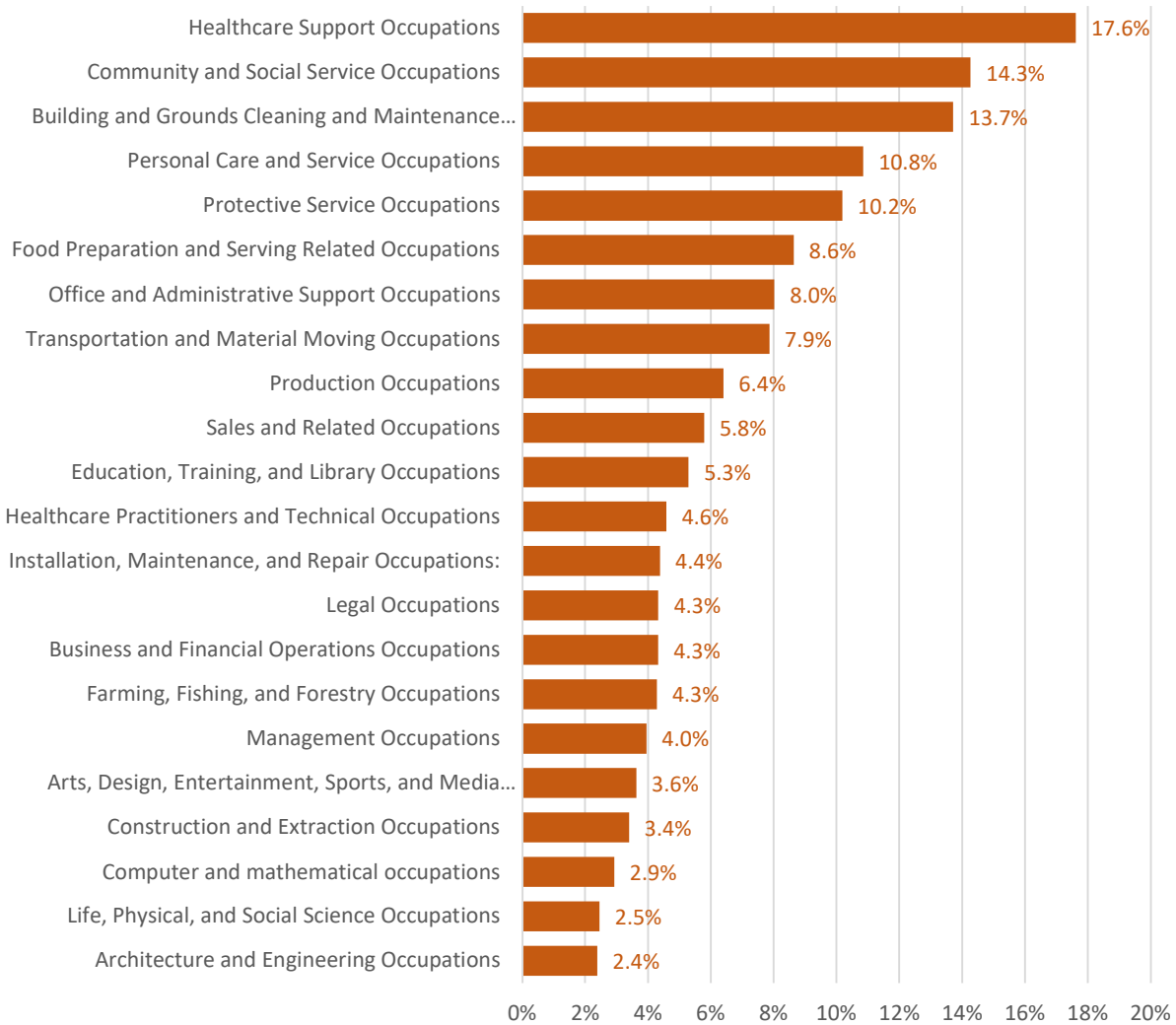


Source: Quarterly Workforce Indicators (QWI)

## Employment Summary by EEO Occupation Group

Over the 2006-2010 period, the Census EEO Tabulation estimates that 82,440 Black-alone workers residing in the Pittsburgh MSA made up 6.9% of all employed workers in the region. Major occupation groups provide a broad overview of regional employment patterns. Figure 3 and Table 2 summarize employment by race in each of 22 major occupation groups for workers residing in the Pittsburgh MSA. Among these major occupation groups, Black-alone workers made up the highest percentage of workers in *Healthcare Support Occupations* (17.6%), followed by *Community and Social Service Occupations* (14.3%). Black-alone workers made up the lowest percentage of workers in *Architecture and Engineering Occupations* (2.4%) and *Life Physical and Social Science Occupations* (2.5%).

Figure 3. Black-Alone Workers as Percentage of All Workers by Occupation Groups – Pittsburgh MSA



Source: Census Bureau EEO Tabulation

EEO Employment Data by Occupation and Race for the Pittsburgh Region`

Table 2. Pittsburgh MSA Workers by Race and Major Occupation Group

Occupation Group	All Workers	White-Alone Workers		Black-Alone Workers		All Other Workers	
Total, all occupations	1,200,920	1,081,190	90.0%	82,470	6.9%	37,260	3.1%
Management	103,875	96,694	93.1%	4,109	4.0%	3,072	3.0%
Business and financial operations	56,830	52,835	93.0%	2,459	4.3%	1,536	2.7%
Computer and mathematical	27,510	23,539	85.6%	805	2.9%	3,166	11.5%
Architecture and engineering	25,125	23,288	92.7%	599	2.4%	1,238	4.9%
Life, physical, and social science	10,755	9,320	86.7%	264	2.5%	1,171	10.9%
Community and social service	22,355	18,564	83.0%	3,190	14.3%	601	2.7%
Legal	13,855	12,985	93.7%	600	4.3%	270	1.9%
Education, training, and library	64,480	58,245	90.3%	3,414	5.3%	2,821	4.4%
Arts, design, entertainment, sports, and media	18,985	17,910	94.3%	689	3.6%	386	2.0%
Healthcare practitioners and technical	79,365	72,319	91.1%	3,639	4.6%	3,407	4.3%
Healthcare support	34,315	27,409	79.9%	6,045	17.6%	861	2.5%
Protective service	21,785	18,979	87.1%	2,220	10.2%	586	2.7%
Food preparation and serving related	76,390	66,735	87.4%	6,600	8.6%	3,055	4.0%
Building and grounds cleaning and maintenance	43,230	36,055	83.4%	5,930	13.7%	1,245	2.9%
Personal care and service	37,520	32,049	85.4%	4,070	10.8%	1,401	3.7%
Sales and related	132,295	120,869	91.4%	7,660	5.8%	3,766	2.8%
Office and administrative support	176,990	159,107	89.9%	14,204	8.0%	3,679	2.1%
Farming, fishing, and forestry	2,100	1,995	95.0%	90	4.3%	15	0.7%
Construction and extraction	62,985	59,910	95.1%	2,144	3.4%	931	1.5%
Installation, maintenance, and repair	37,900	35,738	94.3%	1,663	4.4%	499	1.3%
Production	66,915	61,180	91.4%	4,283	6.4%	1,452	2.2%
Transportation and material moving	76,790	69,243	90.2%	6,045	7.9%	1,502	2.0%

Source: Census Bureau EEO Tabulation

## Black Workers by Detailed Occupation in the Pittsburgh Region

For Pittsburgh, the EEO tabulation itemizes employment data for 483 distinct occupation categories. At this level of detail, Table 3 lists the occupations that have the largest number of Black-alone workers residing in the Pittsburgh MSA. The occupations employing the largest number of Black-alone workers include *Nursing, psychiatric, and home health aides* (5,050 worker) and *Janitors and building cleaners* (3,875 workers).

Table 4 lists the detailed occupation categories with the highest concentrations of Black-alone workers in the Pittsburgh MSA. This table is limited occupations that employ a total of 500 or more workers in the region. Among these occupations, the highest concentration of Black-alone workers residing in the Pittsburgh region include *Telephone operators* (27.4%), and *Telemarketers* (24.2%).

Following that, the remainder of this report itemizes the employment by race for each of the 484 occupation categories, along with summary totals for 22 occupation groups, for workers residing in the Pittsburgh MSA.

Table 3. Pittsburgh MSA Occupations with the Largest Number of Black-Alone Workers

Occupation	2010 SOC Code	Total Workers	Black-Alone Workers	
Nursing, psychiatric, and home health aides	31-1010	22,660	5,080	22.4%
Janitors and building cleaners	37-201X	23,235	3,875	16.7%
Cashiers	41-2010	27,680	3,225	11.7%
Secretaries and administrative assistants	43-6010	39,815	2,350	5.9%
Cooks	35-2010	20,095	2,265	11.3%
Customer service representatives	43-4051	19,085	2,235	11.7%
Childcare workers	39-9011	9,620	1,665	17.3%
Laborers and freight, stock, and material	53-7062	21,055	1,560	7.4%
Retail salespersons	41-2031	29,025	1,530	5.3%
Maids and housekeeping cleaners	37-2012	8,810	1,490	16.9%
Driver/sales workers and truck drivers	53-3030	25,470	1,420	5.6%
Social workers	21-1020	8,055	1,300	16.1%
Security guards and gaming surveillance	33-9030	7,310	1,245	17.0%
Personal care aides	39-9021	7,355	1,220	16.6%
Counselors	21-1010	6,615	1,120	16.9%
Bus drivers	53-3020	7,470	1,100	14.7%
First-line supervisors of retail sales workers	41-1011	23,515	1,045	4.4%
Registered nurses	29-1141	28,800	1,035	3.6%
Waiters and waitresses	35-3031	19,590	1,000	5.1%
Elementary and middle school teachers	25-2020	26,245	985	3.8%

Source: Census Bureau EEO Tabulation



Table 4. Pittsburgh MSA Occupations\* with the Highest Percentage of Black-Alone Workers

Occupation*	2010 SOC Code	Total Workers	Black-Alone Workers	
Telephone operators	43-2021	785	215	27.4%
Telemarketers	41-9041	1,590	385	24.2%
Information and record clerks, all other	43-4199	1,020	245	24.0%
Nursing, psychiatric, and home health aides	31-1010	22,660	5,080	22.4%
Social and human service assistants	21-1093	1,095	240	21.9%
Bakers	51-3011	1,745	380	21.8%
Medical records and health information	29-2071	1,025	205	20.0%
Packers and packagers, hand	53-7064	2,400	435	18.1%
Public relations and fundraising managers	11-2031	515	90	17.5%
Childcare workers	39-9011	9,620	1,665	17.3%
Food servers, nonrestaurant	35-3041	2,180	375	17.2%
Security guards and gaming surveillance	33-9030	7,310	1,245	17.0%
Counselors	21-1010	6,615	1,120	16.9%
Maids and housekeeping cleaners	37-2012	8,810	1,490	16.9%
Janitors and building cleaners	37-201X	23,235	3,875	16.7%
Personal care aides	39-9021	7,355	1,220	16.6%
Insurance claims and policy processing	43-9041	3,245	530	16.3%
Social workers	21-1020	8,055	1,300	16.1%
Barbers	39-5011	565	90	15.9%
Healthcare support workers, all other, including medical equipment preparers	31-909X	2,090	330	15.8%

Source: Census Bureau EEO Tabulation

\* Among specific occupations with 500 or greater total workers in the Pittsburgh MSA

Table 5. Employment by Race for Detailed Occupations in the Pittsburgh MSA

	2010 SOC Code	Total Workers	White-Alone Workers		Black-Alone Workers		All Other Workers	
<b>Total, all occupation</b>		1,200,920	1,081,190	90.0%	82,470	6.9%	37,260	3.1%
<b>Management Occupations</b>		103,875	96,694	93.1%	4,109	4.0%	3,072	3.0%
Chief executives and legislators	11-10XX	8,320	8,010	96.3%	90	1.1%	220	2.6%
General and operations managers	11-1021	7,665	7,330	95.6%	205	2.7%	130	1.7%
Advertising and promotions managers	11-2011	415	380	91.6%	30	7.2%	5	1.2%
Marketing and sales managers	11-2020	6,955	6,675	96.0%	90	1.3%	190	2.7%
Public relations and fundraising	11-2031	515	400	77.7%	90	17.5%	25	4.9%
Administrative services managers	11-3011	970	905	93.3%	55	5.7%	10	1.0%
Computer and information systems	11-3021	3,910	3,355	85.8%	140	3.6%	415	10.6%
Financial managers	11-3031	9,080	8,670	95.5%	340	3.7%	70	0.8%
Compensation and benefits managers	11-3111	150	150	100.0%	0	0.0%	0	0.0%
Human resources managers	11-3121	2,175	2,055	94.5%	65	3.0%	55	2.5%
Training and development managers	11-3131	310	290	93.5%	4	1.3%	16	5.2%
Industrial production managers	11-3051	1,865	1,835	98.4%	10	0.5%	20	1.1%
Purchasing managers	11-3061	1,445	1,315	91.0%	65	4.5%	65	4.5%
Transportation, storage, and	11-3071	1,655	1,590	96.1%	30	1.8%	35	2.1%
Farmers, ranchers, and other	11-9013	1,475	1,460	99.0%	0	0.0%	15	1.0%
Construction managers	11-9021	5,755	5,615	97.6%	65	1.1%	75	1.3%
Education administrators	11-9030	7,460	6,584	88.3%	685	9.2%	191	2.6%
Architectural and engineering	11-9041	1,440	1,395	96.9%	0	0.0%	45	3.1%
Food service managers	11-9051	7,335	6,530	89.0%	305	4.2%	500	6.8%
Gaming managers	11-9071	50	50	100.0%	0	0.0%	0	0.0%
Lodging managers	11-9081	600	525	87.5%	60	10.0%	15	2.5%
Medical and health services	11-9111	5,445	5,030	92.4%	285	5.2%	130	2.4%
Natural sciences managers	11-9121	275	265	96.4%	0	0.0%	10	3.6%
Property, real estate, and community	11-9141	2,615	2,380	91.0%	200	7.6%	35	1.3%

EEO Employment Data by Occupation and Race for the Pittsburgh Region`

	2010 SOC Code	Total Workers	White-Alone Workers		Black-Alone Workers		All Other Workers	
Social and community service	11-9151	3,340	2,705	81.0%	510	15.3%	125	3.7%
Miscellaneous managers, including	11-9XXX	22,655	21,195	93.6%	785	3.5%	675	3.0%
<b>Business and Financial Operations</b>		56,830	52,835	93.0%	2,459	4.3%	1,541	2.7%
Agents and business managers of	13-1011	315	310	98.4%	4	1.3%	1	0.3%
Buyers and purchasing agents, farm	13-1021	75	75	100.0%	0	0.0%	0	0.0%
Wholesale and retail buyers, except	13-1022	2,065	1,975	95.6%	35	1.7%	55	2.7%
Purchasing agents, except wholesale,	13-1023	2,210	2,040	92.3%	130	5.9%	40	1.8%
Claims adjusters, appraisers,	13-1030	2,825	2,550	90.3%	270	9.6%	5	0.2%
Compliance officers	13-1041	1,215	1,170	96.3%	35	2.9%	10	0.8%
Cost estimators	13-1051	1,090	1,095	100.5%	0	0.0%	-5	0.0%
Human resources workers	13-1070	5,210	4,675	89.7%	420	8.1%	115	2.2%
Compensation, benefits, and job	13-1141	1,225	1,045	85.3%	170	13.9%	10	0.8%
Training and development specialists	13-1151	825	755	91.5%	60	7.3%	10	1.2%
Logisticians	13-1081	585	560	95.7%	30	5.1%	0	0.0%
Management analysts	13-1111	6,090	5,520	90.6%	215	3.5%	355	5.8%
Meeting, convention, and event	13-1121	450	400	88.9%	30	6.7%	20	4.4%
Fundraisers	13-1131	1,070	920	86.0%	75	7.0%	75	7.0%
Market research analysts and	13-1161	1,355	1,310	96.7%	15	1.1%	30	2.2%
Business operations specialists, all	13-1199	1,690	1,575	93.2%	10	0.6%	105	6.2%
Accountants and auditors	13-2011	18,200	17,265	94.9%	525	2.9%	410	2.3%
Appraisers and assessors of real	13-2021	860	800	93.0%	40	4.7%	20	2.3%
Budget analysts	13-2031	270	220	81.5%	10	3.7%	40	14.8%
Credit analysts	13-2041	275	265	96.4%	10	3.6%	0	0.0%
Financial analysts	13-2051	360	290	80.6%	20	5.6%	50	13.9%
Personal financial advisors	13-2052	3,590	3,360	93.6%	170	4.7%	60	1.7%
Insurance underwriters	13-2053	425	405	95.3%	20	4.7%	0	0.0%
Financial examiners	13-2061	185	170	91.9%	15	8.1%	0	0.0%
Credit counselors and loan officers	13-2070	2,425	2,275	93.8%	75	3.1%	75	3.1%
Tax examiners and collectors, and	13-2081	605	590	97.5%	15	2.5%	0	0.0%

EEO Employment Data by Occupation and Race for the Pittsburgh Region`

	2010 SOC Code	Total Workers	White-Alone Workers		Black-Alone Workers		All Other Workers	
Tax preparers	13-2082	890	840	94.4%	20	2.2%	30	3.4%
Financial specialists, all other	13-2099	450	380	84.4%	40	8.9%	30	6.7%
<b>Computer and mathematical</b>		27,510	23,539	85.6%	805	2.9%	3,166	11.5%
Computer and information research	15-1111	285	130	45.6%	0	0.0%	155	54.4%
Computer systems analysts	15-1121	4,520	3,725	82.4%	195	4.3%	600	13.3%
Information security analysts	15-1122	355	355	100.0%	0	0.0%	0	0.0%
Computer programmers	15-1131	4,695	3,910	83.3%	70	1.5%	715	15.2%
Software developers, applications and	15-113X	5,800	4,450	76.7%	115	2.0%	1,235	21.3%
Web developers	15-1134	1,115	1,020	91.5%	25	2.2%	70	6.3%
Computer support specialists	15-1150	3,715	3,405	91.7%	215	5.8%	95	2.6%
Database administrators	15-1141	820	754	92.0%	0	0.0%	66	8.0%
Network and computer systems	15-1142	2,105	2,010	95.5%	80	3.8%	15	0.7%
Computer network architects	15-1143	685	550	80.3%	25	3.6%	110	16.1%
Computer occupations, all other	15-1199	2,065	1,980	95.9%	35	1.7%	50	2.4%
Actuaries	15-2011	250	250	100.0%	0	0.0%	0	0.0%
Operations research analysts	15-2031	745	705	94.6%	30	4.0%	10	1.3%
Miscellaneous mathematical science	15-20XX	355	295	83.1%	15	4.2%	45	12.7%
<b>Architecture and Engineering</b>		25,125	23,288	92.7%	599	2.4%	1,238	4.9%
Architects, except naval	17-1010	1,415	1,309	92.5%	0	0.0%	106	7.5%
Surveyors, cartographers, and	17-1020	200	200	100.0%	0	0.0%	0	0.0%
Aerospace engineers	17-2011	160	160	100.0%	0	0.0%	0	0.0%
Biomedical and agricultural engineers	17-20XX	160	160	100.0%	0	0.0%	0	0.0%
Chemical engineers	17-2041	375	329	87.7%	15	4.0%	31	8.3%
Civil engineers	17-2051	3,230	3,070	95.0%	60	1.9%	100	3.1%
Computer hardware engineers	17-2061	400	355	88.8%	15	3.8%	30	7.5%
Electrical and electronics engineers	17-2070	2,245	2,065	92.0%	110	4.9%	70	3.1%
Environmental engineers	17-2081	265	255	96.2%	0	0.0%	10	3.8%
Industrial engineers, including health	17-2110	1,495	1,460	97.7%	4	0.3%	31	2.1%

EEO Employment Data by Occupation and Race for the Pittsburgh Region`

	2010 SOC Code	Total Workers	White-Alone Workers		Black-Alone Workers		All Other Workers	
Marine engineers and naval architects	17-2121	70	70	100.0%	0	0.0%	0	0.0%
Materials engineers	17-2131	475	455	95.8%	0	0.0%	20	4.2%
Mechanical engineers	17-2141	1,940	1,780	91.8%	30	1.5%	130	6.7%
Petroleum, mining and geological	17-21XX	200	200	100.0%	0	0.0%	0	0.0%
Miscellaneous engineers, including	17-21YY	5,315	4,645	87.4%	100	1.9%	570	10.7%
Drafters	17-3010	3,185	3,075	96.5%	45	1.4%	65	2.0%
Engineering technicians, except	17-3020	3,555	3,260	91.7%	220	6.2%	75	2.1%
Surveying and mapping technicians	17-3031	440	440	100.0%	0	0.0%	0	0.0%
<b>Life, Physical, and Social Science</b>		<b>10,755</b>	<b>9,320</b>	<b>86.7%</b>	<b>264</b>	<b>2.5%</b>	<b>1,176</b>	<b>10.9%</b>
Agricultural and food scientists	19-1010	95	95	100.0%	0	0.0%	0	0.0%
Biological scientists	19-1020	630	525	83.3%	0	0.0%	105	16.7%
Conservation scientists and foresters	19-1030	105	105	100.0%	0	0.0%	0	0.0%
Medical scientists, and life scientists,	19-10XX	1,070	670	62.6%	40	3.7%	360	33.6%
Astronomers and physicists	19-2010	75	60	80.0%	0	0.0%	15	20.0%
Atmospheric and space scientists	19-2021	65	65	100.0%	0	0.0%	0	0.0%
Chemists and materials scientists	19-2030	985	890	90.4%	35	3.6%	60	6.1%
Environmental scientists and	19-2040	625	630	100.8%	0	0.0%	0	0.0%
Physical scientists, all other	19-2099	1,415	1,050	74.2%	0	0.0%	365	25.8%
Economists	19-3011	45	45	100.0%	0	0.0%	0	0.0%
Psychologists	19-3030	1,505	1,465	97.3%	20	1.3%	20	1.3%
Urban and regional planners	19-3051	145	145	100.0%	0	0.0%	0	0.0%
Miscellaneous social scientists,	19-30XX	430	425	98.8%	0	0.0%	5	1.2%
Agricultural and food science	19-4011	240	230	95.8%	4	1.7%	6	2.5%
Biological technicians	19-4021	165	130	78.8%	10	6.1%	25	15.2%
Chemical technicians	19-4031	950	885	93.2%	50	5.3%	15	1.6%
Geological and petroleum	19-40XX	395	385	97.5%	10	2.5%	0	0.0%
Miscellaneous life, physical, and	19-40YY	1,815	1,520	83.7%	95	5.2%	200	11.0%

EEO Employment Data by Occupation and Race for the Pittsburgh Region`

	2010 SOC Code	Total Workers	White-Alone Workers		Black-Alone Workers		All Other Workers	
<b>Community and Social Service</b>		22,355	18,564	83.0%	3,190	14.3%	606	2.7%
Counselors	21-1010	6,615	5,310	80.3%	1,120	16.9%	185	2.8%
Social workers	21-1020	8,055	6,580	81.7%	1,300	16.1%	175	2.2%
Probation officers and correctional	21-1092	670	590	88.1%	80	11.9%	0	0.0%
Social and human service assistants	21-1093	1,095	770	70.3%	240	21.9%	85	7.8%
Miscellaneous community and social	21-109X	765	645	84.3%	105	13.7%	15	2.0%
Clergy	21-2011	3,895	3,460	88.8%	305	7.8%	130	3.3%
Directors, religious activities and	21-2021	555	530	95.5%	30	5.4%	0	0.0%
Religious workers, all other	21-2099	705	679	96.3%	10	1.4%	16	2.3%
<b>Legal Occupations</b>		13,855	12,985	93.7%	600	4.3%	270	1.9%
Lawyers, and judges, magistrates,	23-10XX	8,920	8,480	95.1%	245	2.7%	195	2.2%
Judicial law clerks	23-1012	130	130	100.0%	0	0.0%	0	0.0%
Paralegals and legal assistants	23-2011	2,735	2,485	90.9%	190	6.9%	60	2.2%
Miscellaneous legal support workers	23-2090	2,070	1,890	91.3%	165	8.0%	15	0.7%
<b>Education, Training, and Library</b>		64,480	58,245	90.3%	3,414	5.3%	2,821	4.4%
Postsecondary teachers	25-1000	13,695	11,295	82.5%	675	4.9%	1,725	12.6%
Preschool and kindergarten teachers	25-2010	3,225	2,920	90.5%	230	7.1%	75	2.3%
Elementary and middle school	25-2020	26,245	24,995	95.2%	985	3.8%	265	1.0%
Secondary school teachers	25-2030	5,760	5,385	93.5%	280	4.9%	95	1.6%
Special education teachers	25-2050	1,235	1,180	95.5%	40	3.2%	15	1.2%
Other teachers and instructors	25-3000	6,075	5,225	86.0%	445	7.3%	405	6.7%
Archivists, curators, and museum	25-4010	300	295	98.3%	4	1.3%	1	0.3%
Librarians	25-4021	1,250	1,165	93.2%	10	0.8%	75	6.0%
Library technicians	25-4031	340	265	77.9%	55	16.2%	20	5.9%
Teacher assistants	25-9041	5,830	5,100	87.5%	625	10.7%	105	1.8%
Other education, training, and library	25-90XX	525	420	80.0%	65	12.4%	40	7.6%

EEO Employment Data by Occupation and Race for the Pittsburgh Region`

	2010 SOC Code	Total Workers	White-Alone Workers		Black-Alone Workers		All Other Workers	
<b>Arts, Design, Entertainment, Sports, and Media</b>		18,985	17,910	94.3%	689	3.6%	386	2.0%
Artists and related workers	27-1010	1,195	1,165	97.5%	15	1.3%	15	1.3%
Designers	27-1020	5,415	5,265	97.2%	45	0.8%	105	1.9%
Actors	27-2011	175	155	88.6%	20	11.4%	0	0.0%
Producers and directors	27-2012	815	715	87.7%	100	12.3%	0	0.0%
Athletes, coaches, umpires, and	27-2020	1,940	1,730	89.2%	120	6.2%	90	4.6%
Dancers and choreographers	27-2030	90	90	100.0%	0	0.0%	0	0.0%
Musicians, singers, and related	27-2040	1,560	1,450	92.9%	80	5.1%	30	1.9%
Entertainers and performers, sports	27-2099	445	365	82.0%	65	14.6%	15	3.4%
Announcers	27-3010	475	380	80.0%	45	9.5%	50	10.5%
News analysts, reporters and	27-3020	705	660	93.6%	40	5.7%	5	0.7%
Public relations specialists	27-3031	805	740	91.9%	60	7.5%	5	0.6%
Editors	27-3041	1,015	995	98.0%	4	0.4%	16	1.6%
Technical writers	27-3042	630	615	97.6%	15	2.4%	0	0.0%
Writers and authors	27-3043	1,220	1,220	100.0%	0	0.0%	0	0.0%
Miscellaneous media and	27-3090	270	240	88.9%	0	0.0%	30	11.1%
Broadcast and sound engineering	27-40XX	755	740	98.0%	15	2.0%	0	0.0%
Photographers	27-4021	1,110	1,050	94.6%	55	5.0%	5	0.5%
Television, video, and motion picture	27-4030	365	335	91.8%	10	2.7%	20	5.5%
<b>Healthcare Practitioners and Technical Occupations</b>		79,365	72,319	91.1%	3,639	4.6%	3,417	4.3%
Chiropractors	29-1011	685	690	100.7%	0	0.0%	0	0.0%
Dentists	29-1020	1,380	1,305	94.6%	10	0.7%	65	4.7%
Dietitians and nutritionists	29-1031	660	595	90.2%	60	9.1%	5	0.8%
Optometrists	29-1041	410	395	96.3%	4	1.0%	11	2.7%
Pharmacists	29-1051	3,440	3,360	97.7%	0	0.0%	80	2.3%
Physicians and surgeons	29-1060	8,985	6,755	75.2%	300	3.3%	1,930	21.5%
Physician assistants	29-1071	915	885	96.7%	10	1.1%	20	2.2%
Podiatrists	29-1081	180	149	82.8%	30	16.7%	1	0.6%

EEO Employment Data by Occupation and Race for the Pittsburgh Region`

	2010 SOC Code	Total Workers	White-Alone Workers		Black-Alone Workers		All Other Workers	
Audiologists	29-1181	140	140	100.0%	0	0.0%	0	0.0%
Occupational therapists	29-1122	1,095	1,095	100.0%	0	0.0%	0	0.0%
Physical therapists	29-1123	1,920	1,865	97.1%	10	0.5%	45	2.3%
Radiation therapists	29-1124	95	95	100.0%	0	0.0%	0	0.0%
Recreational therapists	29-1125	135	115	85.2%	25	18.5%	0	0.0%
Respiratory therapists	29-1126	1,095	995	90.9%	60	5.5%	40	3.7%
Speech-language pathologists	29-1127	1,190	1,150	96.6%	15	1.3%	25	2.1%
Other therapists, including exercise	29-112X	2,240	2,040	91.1%	115	5.1%	85	3.8%
Veterinarians	29-1131	325	310	95.4%	0	0.0%	15	4.6%
Registered nurses	29-1141	28,800	27,295	94.8%	1,035	3.6%	470	1.6%
Nurse anesthetists	29-1151	550	540	98.2%	10	1.8%	0	0.0%
Nurse practitioners and nurse	29-11XX	880	840	95.5%	20	2.3%	20	2.3%
Health diagnosing and treating	29-1199	125	85	68.0%	0	0.0%	40	32.0%
Clinical laboratory technologists and	29-2010	3,705	3,395	91.6%	150	4.0%	160	4.3%
Dental hygienists	29-2021	1,250	1,230	98.4%	0	0.0%	20	1.6%
Diagnostic related technologists and	29-2030	3,105	2,900	93.4%	150	4.8%	55	1.8%
Emergency medical technicians and	29-2041	2,180	2,080	95.4%	95	4.4%	5	0.2%
Health practitioner support	29-2050	4,475	3,930	87.8%	380	8.5%	165	3.7%
Licensed practical and licensed	29-2061	5,805	4,880	84.1%	840	14.5%	85	1.5%
Medical records and health	29-2071	1,025	780	76.1%	205	20.0%	40	3.9%
Opticians, dispensing	29-2081	475	475	100.0%	0	0.0%	0	0.0%
Miscellaneous health technologists	29-2090	1,265	1,155	91.3%	90	7.1%	20	1.6%
Other healthcare practitioners and	29-9000	835	795	95.2%	25	3.0%	15	1.8%
<b>Healthcare Support Occupations</b>		<b>34,315</b>	<b>27,409</b>	<b>79.9%</b>	<b>6,045</b>	<b>17.6%</b>	<b>866</b>	<b>2.5%</b>
Nursing, psychiatric, and home health	31-1010	22,660	16,825	74.2%	5,080	22.4%	755	3.3%
Occupational therapy assistants and	31-2010	225	225	100.0%	0	0.0%	0	0.0%
Physical therapist assistants and	31-2020	640	615	96.1%	0	0.0%	25	3.9%
Massage therapists	31-9011	640	625	97.7%	0	0.0%	15	2.3%
Dental assistants	31-9091	1,815	1,765	97.2%	50	2.8%	0	0.0%



EEO Employment Data by Occupation and Race for the Pittsburgh Region`

	2010 SOC Code	Total Workers	White-Alone Workers		Black-Alone Workers		All Other Workers	
Medical assistants	31-9092	3,655	3,185	87.1%	450	12.3%	20	0.5%
Medical transcriptionists	31-9094	925	900	97.3%	30	3.2%	0	0.0%
Pharmacy aides	31-9095	545	500	91.7%	25	4.6%	20	3.7%
Veterinary assistants and laboratory	31-9096	225	225	100.0%	0	0.0%	0	0.0%
Phlebotomists	31-9097	895	804	89.8%	80	8.9%	11	1.2%
Healthcare support workers, all other,	31-909X	2,090	1,740	83.3%	330	15.8%	20	1.0%
<b>Protective Service Occupations</b>		21,785	18,979	87.1%	2,220	10.2%	586	2.7%
First-line supervisors of correctional	33-1011	250	195	78.0%	30	12.0%	25	10.0%
First-line supervisors of police and	33-1012	680	580	85.3%	65	9.6%	35	5.1%
First-line supervisors of fire fighting	33-1021	140	130	92.9%	10	7.1%	0	0.0%
First-line supervisors of protective	33-1099	875	765	87.4%	90	10.3%	20	2.3%
Firefighters	33-2011	905	805	89.0%	75	8.3%	25	2.8%
Fire inspectors	33-2020	65	55	84.6%	0	0.0%	10	15.4%
Bailiffs, correctional officers, and	33-3010	2,235	2,060	92.2%	125	5.6%	50	2.2%
Detectives and criminal investigators	33-3021	1,035	905	87.4%	85	8.2%	45	4.3%
Miscellaneous law enforcement	33-30XX	120	80	66.7%	40	33.3%	0	0.0%
Police officers	33-3050	4,570	4,200	91.9%	255	5.6%	115	2.5%
Animal control workers	33-9011	40	40	100.0%	0	0.0%	0	0.0%
Private detectives and investigators	33-9021	795	730	91.8%	40	5.0%	25	3.1%
Security guards and gaming	33-9030	7,310	5,900	80.7%	1,245	17.0%	165	2.3%
Crossing guards	33-9091	1,055	1,000	94.8%	45	4.3%	10	0.9%
Transportation security screeners	33-9093	115	114	99.1%	0	0.0%	1	0.9%
Lifeguards and other recreational, and	33-909X	1,595	1,420	89.0%	115	7.2%	60	3.8%
<b>Food Preparation and Serving</b>		76,390	66,735	87.4%	6,600	8.6%	3,055	4.0%
Chefs and head cooks	35-1011	2,820	2,260	80.1%	375	13.3%	185	6.6%
First-line supervisors of food	35-1012	4,295	3,940	91.7%	325	7.6%	30	0.7%
Cooks	35-2010	20,095	16,650	82.9%	2,265	11.3%	1,180	5.9%
Food preparation workers	35-2021	6,250	5,420	86.7%	590	9.4%	240	3.8%

EEO Employment Data by Occupation and Race for the Pittsburgh Region`

	2010 SOC Code	Total Workers	White-Alone Workers		Black-Alone Workers		All Other Workers	
Bartenders	35-3011	4,725	4,500	95.2%	145	3.1%	80	1.7%
Combined food preparation and Counter attendants, cafeteria, food Waiters and waitresses	35-3021	3,925	3,315	84.5%	435	11.1%	175	4.5%
	35-3022	2,325	2,055	88.4%	230	9.9%	40	1.7%
	35-3031	19,590	17,865	91.2%	1,000	5.1%	725	3.7%
Food servers, nonrestaurant	35-3041	2,180	1,765	81.0%	375	17.2%	40	1.8%
Miscellaneous food preparation and Dishwashers	35-90XX	3,820	3,510	91.9%	160	4.2%	150	3.9%
	35-9021	3,825	3,055	79.9%	595	15.6%	175	4.6%
Hosts and hostesses, restaurant,	35-9031	2,540	2,400	94.5%	105	4.1%	35	1.4%
<b>Building and Grounds Cleaning and</b>		43,230	36,055	83.4%	5,930	13.7%	1,245	2.9%
First-line supervisors of housekeeping	37-1011	1,535	1,285	83.7%	160	10.4%	90	5.9%
First-line supervisors of landscaping,	37-1012	1,460	1,450	99.3%	0	0.0%	10	0.7%
Janitors and building cleaners	37-201X	23,235	18,885	81.3%	3,875	16.7%	475	2.0%
Maids and housekeeping cleaners	37-2012	8,810	6,795	77.1%	1,490	16.9%	525	6.0%
Pest control workers	37-2021	260	235	90.4%	30	11.5%	-5	0.0%
Grounds maintenance workers	37-3010	7,930	7,405	93.4%	375	4.7%	150	1.9%
<b>Personal Care and Service</b>		37,520	32,049	85.4%	4,070	10.8%	1,401	3.7%
First-line supervisors of gaming	39-1010	335	290	86.6%	25	7.5%	20	6.0%
First-line supervisors of personal	39-1021	1,380	1,285	93.1%	15	1.1%	80	5.8%
Animal trainers	39-2011	260	250	96.2%	10	3.8%	0	0.0%
Nonfarm animal caretakers	39-2021	1,290	1,235	95.7%	35	2.7%	20	1.6%
Gaming services workers	39-3010	80	80	100.0%	0	0.0%	0	0.0%
Motion picture projectionists	39-3021	100	50	50.0%	0	0.0%	50	50.0%
Ushers, lobby attendants, and ticket	39-3031	390	325	83.3%	60	15.4%	5	1.3%
Miscellaneous entertainment	39-3090	1,390	1,339	96.3%	45	3.2%	6	0.4%
Embalmers and funeral attendants	39-40XX	210	175	83.3%	25	11.9%	10	4.8%
Morticians, undertakers, and funeral	39-4031	515	505	98.1%	10	1.9%	0	0.0%
Barbers	39-5011	565	445	78.8%	90	15.9%	30	5.3%
Hairdressers, hairstylists, and	39-5012	6,670	6,245	93.6%	340	5.1%	85	1.3%

EEO Employment Data by Occupation and Race for the Pittsburgh Region`

	2010 SOC Code	Total Workers	White-Alone Workers		Black-Alone Workers		All Other Workers	
Miscellaneous personal appearance	39-5090	1,285	800	62.3%	0	0.0%	485	37.7%
Baggage porters, bellhops, and	39-6010	410	335	81.7%	75	18.3%	0	0.0%
Tour and travel guides	39-7010	545	500	91.7%	30	5.5%	15	2.8%
Childcare workers	39-9011	9,620	7,810	81.2%	1,665	17.3%	145	1.5%
Personal care aides	39-9021	7,355	5,930	80.6%	1,220	16.6%	205	2.8%
Recreation and fitness workers	39-9030	3,180	2,845	89.5%	245	7.7%	90	2.8%
Residential advisors	39-9041	1,055	770	73.0%	155	14.7%	130	12.3%
Personal care and service workers, all	39-9099	885	835	94.4%	25	2.8%	25	2.8%
<b>Sales and Related Occupations</b>		132,295	120,869	91.4%	7,660	5.8%	3,766	2.8%
First-line supervisors of retail sales	41-1011	23,515	21,770	92.6%	1,045	4.4%	700	3.0%
First-line supervisors of non-retail	41-1012	9,075	8,680	95.6%	270	3.0%	125	1.4%
Cashiers	41-2010	27,680	23,200	83.8%	3,225	11.7%	1,255	4.5%
Counter and rental clerks	41-2021	1,130	1,020	90.3%	105	9.3%	5	0.4%
Parts salespersons	41-2022	920	910	98.9%	10	1.1%	0	0.0%
Retail salespersons	41-2031	29,025	26,480	91.2%	1,530	5.3%	1,015	3.5%
Advertising sales agents	41-3011	1,880	1,845	98.1%	25	1.3%	10	0.5%
Insurance sales agents	41-3021	4,175	4,070	97.5%	85	2.0%	20	0.5%
Securities, commodities, and financial	41-3031	2,570	2,340	91.1%	135	5.3%	95	3.7%
Travel agents	41-3041	825	810	98.2%	10	1.2%	5	0.6%
Sales representatives, services, all	41-3099	5,555	5,184	93.3%	240	4.3%	131	2.4%
Sales representatives, wholesale and	41-4010	15,135	14,745	97.4%	230	1.5%	160	1.1%
Models, demonstrators, and product	41-9010	465	420	90.3%	0	0.0%	45	9.7%
Real estate brokers and sales agents	41-9020	4,535	4,315	95.1%	155	3.4%	65	1.4%
Sales engineers	41-9031	290	280	96.6%	0	0.0%	10	3.4%
Telemarketers	41-9041	1,590	1,180	74.2%	385	24.2%	25	1.6%
Door-to-door sales workers, news and	41-9091	1,690	1,530	90.5%	135	8.0%	25	1.5%
Sales and related workers, all other	41-9099	2,240	2,090	93.3%	75	3.3%	75	3.3%
<b>Office and Administrative Support</b>		176,990	159,107	89.9%	14,204	8.0%	3,687	2.1%

EEO Employment Data by Occupation and Race for the Pittsburgh Region`

	2010 SOC Code	Total Workers	White-Alone Workers		Black-Alone Workers		All Other Workers	
First-line supervisors of office and Switchboard operators, including Telephone operators	43-1011	12,820	11,925	93.0%	675	5.3%	220	1.7%
Communications equipment	43-2011	415	395	95.2%	25	6.0%	0	0.0%
Bill and account collectors	43-2021	785	555	70.7%	215	27.4%	15	1.9%
Billing and posting clerks	43-2099	85	85	100.0%	0	0.0%	0	0.0%
Bookkeeping, accounting, and Gaming cage workers	43-3011	1,670	1,470	88.0%	155	9.3%	45	2.7%
Payroll and timekeeping clerks	43-3021	5,205	4,915	94.4%	185	3.6%	105	2.0%
Procurement clerks	43-3031	10,045	9,250	92.1%	560	5.6%	235	2.3%
Tellers	43-3041	45	45	100.0%	0	0.0%	0	0.0%
Financial clerks, all other	43-3051	1,530	1,435	93.8%	85	5.6%	10	0.7%
Brokerage clerks	43-3061	220	165	75.0%	50	22.7%	5	2.3%
Court, municipal, and license clerks	43-3071	3,730	3,275	87.8%	345	9.2%	110	2.9%
Credit authorizers, checkers, and Customer service representatives	43-3099	520	445	85.6%	35	6.7%	40	7.7%
Eligibility interviewers, government	43-4011	20	20	100.0%	0	0.0%	0	0.0%
File clerks	43-4031	550	490	89.1%	50	9.1%	10	1.8%
Hotel, motel, and resort desk clerks	43-4041	700	605	86.4%	75	10.7%	20	2.9%
Interviewers, except eligibility and Library assistants, clerical	43-4051	19,085	16,355	85.7%	2,235	11.7%	495	2.6%
Loan interviewers and clerks	43-4061	215	200	93.0%	15	7.0%	0	0.0%
New accounts clerks	43-4071	3,645	3,074	84.3%	375	10.3%	196	5.4%
Correspondence clerks and order	43-4081	610	510	83.6%	30	4.9%	70	11.5%
Human resources assistants, except	43-4111	1,385	1,170	84.5%	195	14.1%	20	1.4%
Receptionists and information clerks	43-4121	1,105	1,015	91.9%	45	4.1%	45	4.1%
Reservation and transportation ticket	43-4131	1,225	1,110	90.6%	70	5.7%	45	3.7%
Information and record clerks, all	43-4141	325	245	75.4%	80	24.6%	0	0.0%
Cargo and freight agents	43-4XXX	850	810	95.3%	25	2.9%	15	1.8%
Couriers and messengers	43-4161	395	310	78.5%	80	20.3%	5	1.3%
	43-4171	9,110	8,175	89.7%	820	9.0%	115	1.3%
	43-4181	565	495	87.6%	70	12.4%	0	0.0%
	43-4199	1,020	735	72.1%	245	24.0%	40	3.9%
	43-5011	85	75	88.2%	0	0.0%	10	11.8%
	43-5021	2,800	2,460	87.9%	325	11.6%	15	0.5%

EEO Employment Data by Occupation and Race for the Pittsburgh Region`

	2010 SOC Code	Total Workers	White-Alone Workers			Black-Alone Workers		All Other Workers	
Dispatchers	43-5030	2,275	2,150	94.5%	100	4.4%	25	1.1%	
Meter readers, utilities	43-5041	260	255	98.1%	0	0.0%	5	1.9%	
Postal service clerks	43-5051	1,475	1,325	89.8%	150	10.2%	0	0.0%	
Postal service mail carriers	43-5052	3,120	2,954	94.7%	110	3.5%	56	1.8%	
Postal service mail sorters,	43-5053	1,220	1,110	91.0%	110	9.0%	0	0.0%	
Production, planning, and expediting	43-5061	2,695	2,400	89.1%	280	10.4%	15	0.6%	
Shipping, receiving, and traffic clerks	43-5071	4,210	3,985	94.7%	160	3.8%	65	1.5%	
Stock clerks and order fillers	43-5081	12,295	11,005	89.5%	975	7.9%	315	2.6%	
Weighers, measurers, checkers, and	43-5111	485	405	83.5%	55	11.3%	25	5.2%	
Secretaries and administrative	43-6010	39,815	36,840	92.5%	2,350	5.9%	625	1.6%	
Computer operators	43-9011	1,360	1,225	90.1%	120	8.8%	15	1.1%	
Data entry keyers	43-9021	4,340	3,630	83.6%	575	13.2%	135	3.1%	
Word processors and typists	43-9022	3,395	3,015	88.8%	365	10.8%	15	0.4%	
Insurance claims and policy	43-9041	3,245	2,570	79.2%	530	16.3%	145	4.5%	
Mail clerks and mail machine	43-9051	875	745	85.1%	105	12.0%	25	2.9%	
Office clerks, general	43-9061	9,620	8,730	90.7%	680	7.1%	210	2.2%	
Office machine operators, except	43-9071	365	295	80.8%	70	19.2%	0	0.0%	
Proofreaders and copy markers	43-9081	150	150	100.0%	0	0.0%	0	0.0%	
Statistical assistants	43-9111	190	189	99.5%	4	2.1%	0	0.0%	
Miscellaneous office and	43-9XXX	4,840	4,315	89.2%	400	8.3%	125	2.6%	
Farming, Fishing, and Forestry		2,100	1,995	95.0%	90	4.3%	15	0.7%	
First-line supervisors of farming,	45-1011	80	80	100.0%	0	0.0%	0	0.0%	
Agricultural inspectors	45-2011	65	65	100.0%	0	0.0%	0	0.0%	
Graders and sorters, agricultural	45-2041	65	20	30.8%	45	69.2%	0	0.0%	
Miscellaneous agricultural workers,	45-20XX	1,685	1,625	96.4%	45	2.7%	15	0.9%	
Forest and conservation workers	45-4011	80	80	100.0%	0	0.0%	0	0.0%	
Logging workers	45-4020	125	125	100.0%	0	0.0%	0	0.0%	

EEO Employment Data by Occupation and Race for the Pittsburgh Region`

	2010 SOC Code	Total Workers	White-Alone Workers		Black-Alone Workers		All Other Workers	
<b>Construction and Extraction</b>		62,985	59,910	95.1%	2,144	3.4%	936	1.5%
First-line supervisors of construction	47-1011	7,120	6,880	96.6%	175	2.5%	65	0.9%
Boilermakers	47-2011	360	350	97.2%	0	0.0%	10	2.8%
Brickmasons, blockmasons, and	47-2020	1,980	1,810	91.4%	115	5.8%	55	2.8%
Carpenters	47-2031	11,590	10,940	94.4%	430	3.7%	220	1.9%
Carpet, floor, and tile installers and	47-2040	1,050	1,020	97.1%	30	2.9%	0	0.0%
Cement masons, concrete finishers,	47-2050	775	770	99.4%	10	1.3%	0	0.0%
Construction laborers	47-2061	11,690	10,995	94.1%	410	3.5%	285	2.4%
Paving, surfacing, and tamping	47-2071	395	385	97.5%	10	2.5%	0	0.0%
Construction equipment operators	47-207X	3,695	3,565	96.5%	60	1.6%	70	1.9%
Drywall installers, ceiling tile installers,	47-2080	740	675	91.2%	65	8.8%	0	0.0%
Electricians	47-2111	5,490	5,315	96.8%	170	3.1%	5	0.1%
Glaziers	47-2121	390	370	94.9%	20	5.1%	0	0.0%
Insulation workers	47-2130	235	205	87.2%	30	12.8%	0	0.0%
Painters, construction and	47-2141	3,700	3,525	95.3%	120	3.2%	55	1.5%
Paperhangers	47-2142	120	110	91.7%	15	12.5%	0	0.0%
Pipelayers, plumbers, pipefitters, and	47-2150	4,960	4,700	94.8%	235	4.7%	25	0.5%
Plasterers and stucco masons	47-2161	345	335	97.1%	15	4.3%	0	0.0%
Reinforcing iron and rebar workers	47-2171	180	175	97.2%	0	0.0%	5	2.8%
Roofers	47-2181	1,500	1,410	94.0%	55	3.7%	35	2.3%
Sheet metal workers	47-2211	985	955	97.0%	25	2.5%	5	0.5%
Structural iron and steel workers	47-2221	745	725	97.3%	20	2.7%	0	0.0%
Helpers, construction trades	47-3010	295	295	100.0%	0	0.0%	0	0.0%
Construction and building inspectors	47-4011	675	650	96.3%	10	1.5%	15	2.2%
Elevator installers and repairers	47-4021	285	285	100.0%	0	0.0%	0	0.0%
Fence erectors	47-4031	75	75	100.0%	0	0.0%	0	0.0%
Hazardous materials removal workers	47-4041	455	305	67.0%	85	18.7%	65	14.3%
Highway maintenance workers	47-4051	870	855	98.3%	15	1.7%	0	0.0%
Rail-track laying and maintenance	47-4061	200	200	100.0%	0	0.0%	0	0.0%
Miscellaneous construction workers,	47-XXXX	235	235	100.0%	0	0.0%	0	0.0%

EEO Employment Data by Occupation and Race for the Pittsburgh Region`

	2010 SOC Code	Total Workers	White-Alone Workers		Black-Alone Workers		All Other Workers	
Derrick, rotary drill, and service unit	47-50YY	185	175	94.6%	10	5.4%	0	0.0%
Earth drillers, except oil and gas	47-5021	160	160	100.0%	0	0.0%	0	0.0%
Explosives workers, ordnance	47-5031	60	60	100.0%	0	0.0%	0	0.0%
Mining machine operators	47-5040	860	830	96.5%	4	0.5%	26	3.0%
Miscellaneous extraction workers,	47-50XX	585	570	97.4%	10	1.7%	5	0.9%
<b>Installation, Maintenance, and</b>		<b>37,900</b>	<b>35,738</b>	<b>94.3%</b>	<b>1,663</b>	<b>4.4%</b>	<b>517</b>	<b>1.4%</b>
First-line supervisors of mechanics,	49-1011	2,490	2,325	93.4%	135	5.4%	30	1.2%
Computer, automated teller, and	49-2011	2,015	1,895	94.0%	40	2.0%	80	4.0%
Radio and telecommunications	49-2020	1,225	1,175	95.9%	50	4.1%	0	0.0%
Avionics technicians	49-2091	75	50	66.7%	25	33.3%	0	0.0%
Electric motor, power tool, and related	49-2092	225	225	100.0%	0	0.0%	0	0.0%
Electrical and electronics repairers,	49-209X	70	65	92.9%	0	0.0%	5	7.1%
Electronic equipment installers and	49-2096	120	100	83.3%	0	0.0%	20	16.7%
Electronic home entertainment	49-2097	400	340	85.0%	60	15.0%	0	0.0%
Security and fire alarm systems	49-2098	370	320	86.5%	50	13.5%	0	0.0%
Aircraft mechanics and service	49-3011	1,070	1,050	98.1%	4	0.4%	16	1.5%
Automotive body and related	49-3021	1,820	1,730	95.1%	90	4.9%	0	0.0%
Automotive glass installers and	49-3022	90	90	100.0%	4	4.4%	0	0.0%
Automotive service technicians and	49-3023	6,905	6,590	95.4%	205	3.0%	110	1.6%
Bus and truck mechanics and diesel	49-3031	2,130	2,105	98.8%	15	0.7%	10	0.5%
Heavy vehicle and mobile equipment	49-3040	1,615	1,575	97.5%	40	2.5%	0	0.0%
Small engine mechanics	49-3050	375	340	90.7%	35	9.3%	0	0.0%
Miscellaneous vehicle and mobile	49-3090	530	475	89.6%	50	9.4%	5	0.9%
Control and valve installers and	49-9010	180	180	100.0%	0	0.0%	0	0.0%
Heating, air conditioning, and	49-9021	2,590	2,489	96.1%	85	3.3%	16	0.6%
Home appliance repairers	49-9031	305	290	95.1%	20	6.6%	0	0.0%
Industrial and refractory machinery	49-904X	3,215	3,040	94.6%	145	4.5%	30	0.9%
Maintenance and repair workers,	49-9071	4,165	3,825	91.8%	255	6.1%	85	2.0%
Maintenance workers, machinery	49-9043	245	245	100.0%	0	0.0%	0	0.0%

EEO Employment Data by Occupation and Race for the Pittsburgh Region`

	2010 SOC Code	Total Workers	White-Alone Workers		Black-Alone Workers		All Other Workers	
Millwrights	49-9044	545	524	96.1%	25	4.6%	0	0.0%
Electrical power-line installers and Telecommunications line installers	49-9051	890	815	91.6%	60	6.7%	15	1.7%
Precision instrument and equipment	49-9052	1,275	1,050	82.4%	175	13.7%	50	3.9%
Coin, vending, and amusement	49-9060	560	560	100.0%	0	0.0%	0	0.0%
Locksmiths and safe repairers	49-9091	545	535	98.2%	0	0.0%	10	1.8%
Manufactured building and mobile Riggers	49-9094	125	125	100.0%	0	0.0%	0	0.0%
Helpers--installation, maintenance, and Other installation, maintenance, and	49-9095	50	50	100.0%	0	0.0%	0	0.0%
	49-9096	55	55	100.0%	0	0.0%	0	0.0%
	49-9098	180	130	72.2%	55	30.6%	0	0.0%
	49-909X	1,450	1,375	94.8%	40	2.8%	35	2.4%
<b>Production Occupations</b>		66,915	61,180	91.4%	4,283	6.4%	1,452	2.2%
First-line supervisors of production	51-1011	6,520	6,295	96.5%	155	2.4%	70	1.1%
Electrical, electronics, and Engine and other machine	51-2020	1,390	1,275	91.7%	60	4.3%	55	4.0%
Structural metal fabricators and fitters	51-2031	70	70	100.0%	0	0.0%	0	0.0%
Miscellaneous assemblers and Bakers	51-2041	1,030	965	93.7%	45	4.4%	20	1.9%
Butchers and other meat, poultry, and Food and tobacco roasting, baking, Food batchmakers	51-2090	5,350	4,755	88.9%	445	8.3%	150	2.8%
Food cooking machine operators and Food processing workers, all other	51-3011	1,745	1,355	77.7%	380	21.8%	10	0.6%
Computer control programmers and Extruding and drawing machine	51-3020	1,395	1,240	88.9%	150	10.8%	5	0.4%
Forging machine setters, operators, Rolling machine setters, operators, Cutting, punching, and press machine	51-3091	50	50	100.0%	0	0.0%	0	0.0%
Drilling and boring machine tool Grinding, lapping, polishing, and	51-3092	645	575	89.1%	55	8.5%	15	2.3%
	51-3093	125	75	60.0%	35	28.0%	15	12.0%
	51-3099	460	250	54.3%	160	34.8%	50	10.9%
	51-4010	515	515	100.0%	0	0.0%	0	0.0%
	51-4021	65	65	100.0%	0	0.0%	0	0.0%
	51-4022	70	70	100.0%	0	0.0%	0	0.0%
	51-4023	275	265	96.4%	10	3.6%	0	0.0%
	51-4031	1,090	975	89.4%	100	9.2%	15	1.4%
	51-4032	125	125	100.0%	0	0.0%	0	0.0%
	51-4033	850	740	87.1%	105	12.4%	5	0.6%



EEO Employment Data by Occupation and Race for the Pittsburgh Region`

	2010 SOC Code	Total Workers	White-Alone Workers		Black-Alone Workers		All Other Workers	
Lathe and turning machine tool Machinists	51-4034	205	200	97.6%	4	2.0%	1	0.5%
Metal furnace operators, tenders,	51-4041	5,065	4,935	97.4%	65	1.3%	65	1.3%
Model makers and patternmakers,	51-4050	815	780	95.7%	35	4.3%	0	0.0%
Molders and molding machine setters,	51-4060	25	25	100.0%	0	0.0%	0	0.0%
Tool and die makers	51-4070	440	395	89.8%	45	10.2%	0	0.0%
Welding, soldering, and brazing	51-4111	465	465	100.0%	0	0.0%	0	0.0%
Heat treating equipment setters,	51-4120	4,635	4,305	92.9%	295	6.4%	35	0.8%
Plating and coating machine setters,	51-4191	125	125	100.0%	0	0.0%	0	0.0%
Tool grinders, filers, and sharpeners	51-4193	80	80	100.0%	0	0.0%	0	0.0%
Miscellaneous metal workers and	51-4194	155	155	100.0%	0	0.0%	0	0.0%
Prepress technicians and workers	51-4XXX	2,920	2,555	87.5%	275	9.4%	90	3.1%
Printing press operators	51-5111	440	400	90.9%	15	3.4%	25	5.7%
Print binding and finishing workers	51-5112	2,150	1,905	88.6%	230	10.7%	15	0.7%
Laundry and dry-cleaning workers	51-5113	195	195	100.0%	0	0.0%	0	0.0%
Pressers, textile, garment, and related	51-6011	1,455	1,260	86.6%	145	10.0%	50	3.4%
Sewing machine operators	51-6021	335	270	80.6%	35	10.4%	30	9.0%
Shoe and leather workers and	51-6031	915	735	80.3%	75	8.2%	105	11.5%
Shoe machine operators and tenders	51-6041	85	80	94.1%	4	4.7%	1	1.2%
Tailors, dressmakers, and sewers	51-6042	10	10	100.0%	0	0.0%	0	0.0%
Textile bleaching and dyeing, and	51-6050	595	510	85.7%	15	2.5%	70	11.8%
Textile knitting and weaving machine	51-606X	15	15	100.0%	0	0.0%	0	0.0%
Textile winding, twisting, and drawing	51-6063	50	0	0.0%	0	0.0%	50	100.0%
Upholsterers	51-6064	40	40	100.0%	0	0.0%	0	0.0%
Miscellaneous textile, apparel, and	51-6093	215	185	86.0%	0	0.0%	30	14.0%
Cabinetmakers and bench carpenters	51-609X	25	25	100.0%	0	0.0%	0	0.0%
Furniture finishers	51-7011	475	435	91.6%	0	0.0%	40	8.4%
Sawing machine setters, operators,	51-7021	125	125	100.0%	0	0.0%	0	0.0%
Woodworking machine setters,	51-7041	170	170	100.0%	0	0.0%	0	0.0%
Miscellaneous woodworkers,	51-7042	90	90	100.0%	0	0.0%	0	0.0%
	51-70XX	145	145	100.0%	0	0.0%	0	0.0%

EEO Employment Data by Occupation and Race for the Pittsburgh Region`

	2010 SOC Code	Total Workers	White-Alone Workers		Black-Alone Workers		All Other Workers	
Power plant operators, distributors, Stationary engineers and boiler	51-8010	460	445	96.7%	10	2.2%	5	1.1%
Water and wastewater treatment plant Miscellaneous plant and system	51-8021	830	805	97.0%	25	3.0%	0	0.0%
Chemical processing machine setters, Crushing, grinding, polishing, mixing, Cutting workers	51-8031	700	665	95.0%	25	3.6%	10	1.4%
Extruding, forming, pressing, and Furnace, kiln, oven, drier, and kettle	51-8090	180	180	100.0%	0	0.0%	0	0.0%
Inspectors, testers, sorters, samplers, Jewelers and precious stone and Medical, dental, and ophthalmic	51-9010	455	435	95.6%	20	4.4%	0	0.0%
Packaging and filling machine Painting workers	51-9020	740	700	94.6%	20	2.7%	20	2.7%
Photographic process workers and Adhesive bonding machine operators	51-9030	880	825	93.8%	50	5.7%	5	0.6%
Cleaning, washing, and metal pickling Etchers and engravers	51-9041	420	370	88.1%	50	11.9%	0	0.0%
Molders, shapers, and casters, except Paper goods machine setters, Tire builders	51-9051	140	140	100.0%	0	0.0%	0	0.0%
Helpers--production workers Other production workers, including	51-9061	6,105	5,675	93.0%	315	5.2%	115	1.9%
<b>Transportation and Material Moving</b>	51-9071	155	140	90.3%	0	0.0%	15	9.7%
Supervisors of transportation and Aircraft pilots and flight engineers	51-9080	560	530	94.6%	10	1.8%	20	3.6%
Air traffic controllers and airfield Flight attendants	51-9111	1,175	1,100	93.6%	35	3.0%	40	3.4%
Ambulance drivers and attendants,	51-9120	655	600	91.6%	40	6.1%	15	2.3%
	51-9151	795	750	94.3%	10	1.3%	35	4.4%
	51-9191	65	65	100.0%	0	0.0%	0	0.0%
	51-9192	65	65	100.0%	0	0.0%	0	0.0%
	51-9194	115	115	100.0%	0	0.0%	0	0.0%
	51-9195	425	405	95.3%	20	4.7%	0	0.0%
	51-9196	100	100	100.0%	0	0.0%	0	0.0%
	51-9197	75	75	100.0%	0	0.0%	0	0.0%
	51-9198	390	310	79.5%	65	16.7%	15	3.8%
	51-91XX	7,200	6,410	89.0%	650	9.0%	140	1.9%
		76,790	69,243	90.2%	6,045	7.9%	1,512	2.0%
	53-1000	1,785	1,670	93.6%	45	2.5%	70	3.9%
	53-2010	1,095	1,035	94.5%	15	1.4%	45	4.1%
	53-2020	205	200	97.6%	0	0.0%	5	2.4%
	53-2031	860	840	97.7%	10	1.2%	10	1.2%
	53-3011	130	130	100.0%	0	0.0%	0	0.0%

EEO Employment Data by Occupation and Race for the Pittsburgh Region`

	2010 SOC Code	Total Workers	White-Alone Workers		Black-Alone Workers		All Other Workers	
Bus drivers	53-3020	7,470	6,280	84.1%	1,100	14.7%	90	1.2%
Driver/sales workers and truck drivers	53-3030	25,470	23,620	92.7%	1,420	5.6%	430	1.7%
Taxi drivers and chauffeurs	53-3041	2,770	2,340	84.5%	435	15.7%	0	0.0%
Motor vehicle operators, all other	53-3099	440	425	96.6%	20	4.5%	0	0.0%
Locomotive engineers and operators	53-4010	540	515	95.4%	10	1.9%	15	2.8%
Railroad brake, signal, and switch	53-4021	85	85	100.0%	0	0.0%	0	0.0%
Railroad conductors and yardmasters	53-4031	570	535	93.9%	35	6.1%	0	0.0%
Subway, streetcar, and other rail	53-40XX	85	85	100.0%	0	0.0%	0	0.0%
Sailors and marine oilers, and ship	53-50XX	85	85	100.0%	0	0.0%	0	0.0%
Ship and boat captains and operators	53-5020	140	140	100.0%	0	0.0%	0	0.0%
Parking lot attendants	53-6021	945	805	85.2%	105	11.1%	35	3.7%
Automotive and watercraft service	53-6031	1,275	1,205	94.5%	45	3.5%	25	2.0%
Transportation inspectors	53-6051	555	540	97.3%	15	2.7%	0	0.0%
Transportation attendants, except	53-6061	140	140	100.0%	0	0.0%	0	0.0%
Miscellaneous transportation workers,	53-60XX	245	235	95.9%	10	4.1%	0	0.0%
Crane and tower operators	53-7021	1,365	1,289	94.4%	75	5.5%	1	0.0%
Dredge, excavating, and loading	53-7030	515	485	94.2%	0	0.0%	30	5.8%
Conveyor operators and tenders, and	53-70XX	110	110	100.0%	0	0.0%	0	0.0%
Industrial truck and tractor operators	53-7051	2,500	2,270	90.8%	205	8.2%	25	1.0%
Cleaners of vehicles and equipment	53-7061	2,755	2,319	84.2%	390	14.2%	46	1.7%
Laborers and freight, stock, and	53-7062	21,055	18,960	90.0%	1,560	7.4%	535	2.5%
Machine feeders and offbearers	53-7063	210	210	100.0%	0	0.0%	0	0.0%
Packers and packagers, hand	53-7064	2,400	1,825	76.0%	435	18.1%	140	5.8%
Pumping station operators	53-7070	165	145	87.9%	20	12.1%	0	0.0%
Refuse and recyclable material	53-7081	410	340	82.9%	65	15.9%	5	1.2%